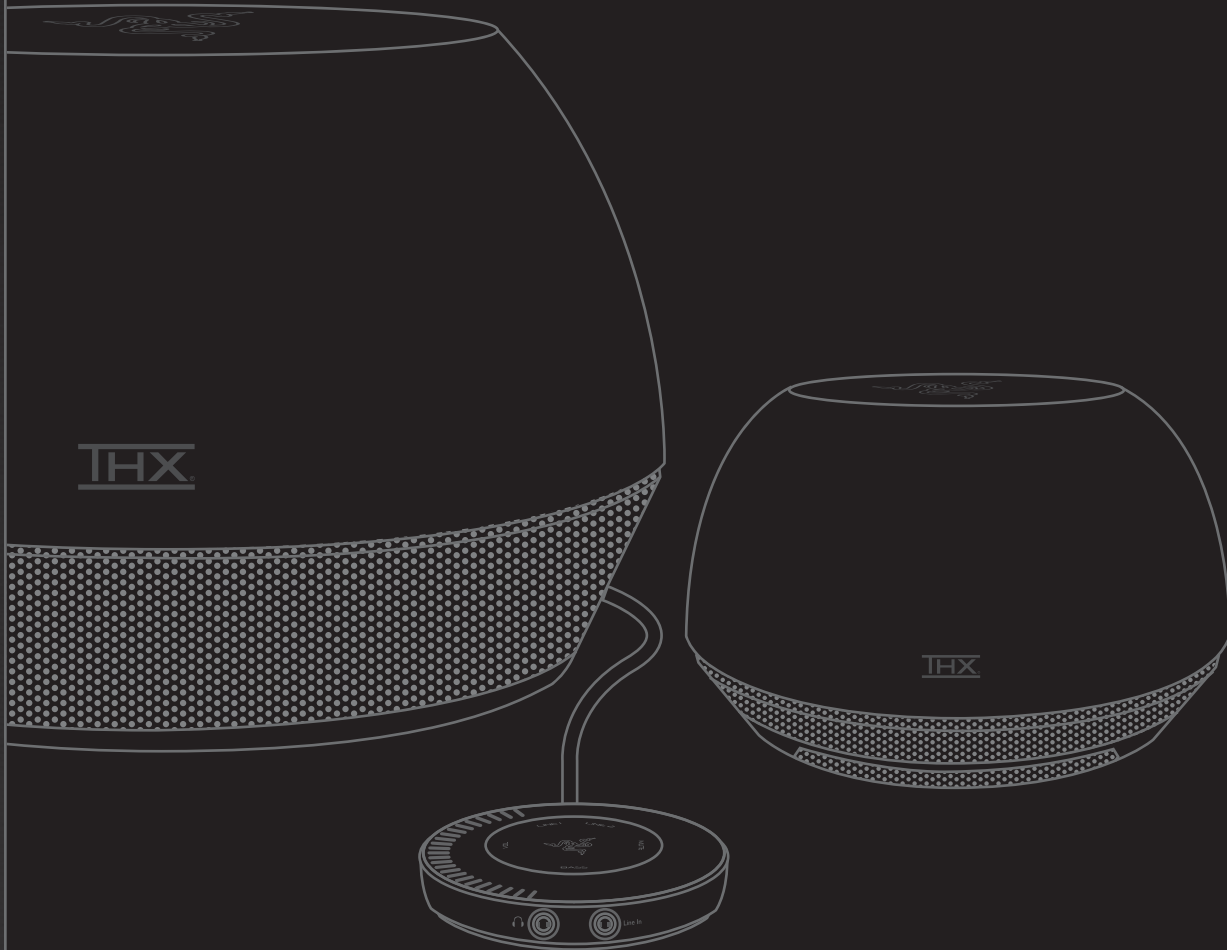


RAZER™

THX

2.1 advanced desktop audio system

THX®



MASTER GUIDE

CONTENTS

02	Product Safety / Recycling	06	Using the Control Pod
	About Razer Mako™ / Package Contents	07	Troubleshooting
	Positioning your Razer Mako™ Speakers		Care and Maintenance / Legal Information
03	Connecting the Razer Mako™ Components		Registration and Technical Support
04	Connecting the Sound Source	08	Warranty Information
05	Powering the Razer Mako™		Limitation of Liability / Notice of FCC Compliance
	Control Pod Operation		WEEE

PRODUCT SAFETY

- Please make sure the apparatus has sufficient ventilation.
- The ventilation on the device should not be impaired by covering the ventilation openings with items, such as newspapers, table-cloths, curtains, etc.
- No naked flame sources, such as lighted candles, should be placed on the apparatus.
- Make sure the apparatus shall not be exposed to dripping or splashing liquids and that objects filled liquid, such as vases, are not placed on the apparatus.
- The appliance inlet of apparatus is used as disconnect device and shall remain readily operable.



Indoor use only.

RECYCLING



Batteries and waste electrical products should not be disposed of with household waste. Please recycle where these facilities exist. Check with your local authority or retailer for recycling advice.

ABOUT RAZER MAKO™

The Razer Mako™ 2.1 Advanced Desktop Audio System is at the cutting edge of audio sophistication.

The audio scientists from Razer™ and THX have revolutionized the downward firing speaker design, incorporating THX Ground Plane™ and THX Slot Speaker™ technologies in the Razer Mako™, immersing the listener in a rich, omnidirectional sound environment never before achieved in desktop audio.

The best-in-class ClassHD® digital amplifier technology found in the Razer Mako™ provides greater power efficiency, minimizing distortion levels; and its bi-amplified satellites bring recording studio sounds to your desktop.

Designed to meet the demanding standards in music for audiophiles and the performance standards of hardcore gamers, the Razer Mako™ redefines the standards for audio by enhancing the experience for gaming, music, movies and more.

PACKAGE CONTENTS

Please carefully remove your Razer Mako™ from the packaging and locate:

Subwoofer	3.5 to 3.5mm Stereo Cable
Satellite Speakers x2	Master Guide
Control Pod	Introductory Booklet
AC Power Cable	Sticker
Satellite Cables x2	

POSITIONING YOUR RAZER MAKO™ SPEAKERS

To get the best audio performance from your Razer Mako speaker system, position the speakers and subwoofer using the following guide:

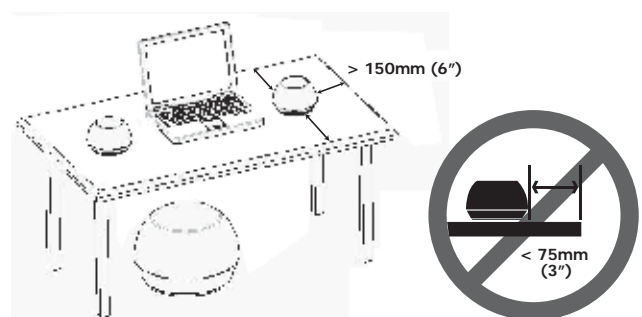
SATELLITES

The THX Ground Plane™ technology guarantees best performance when the satellites are directly on the desk surface, with at least 150mm (6 in) of table surface around each satellite. Ideally, at least 75mm (3 in) of table surface is free of clutter and other objects, to avoid sound absorption or buzzes. If shelf placement is required, place the speakers at least 75mm (3 in) from the shelf edge.

While the system has a wide listening area, it is best that the satellites are orientated such that you have clear line of sight to the THX logo.

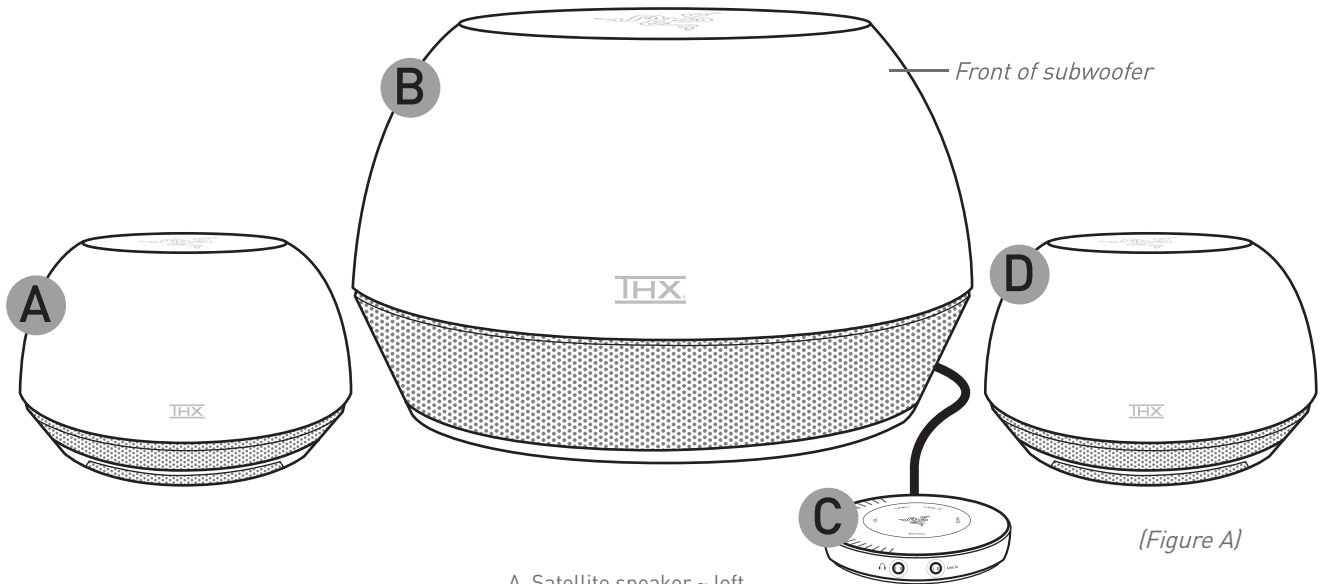
SUBWOOFER

Place the sub on the floor below the desk. Alternatively, place the sub near the rear of the desk. Placement near a wall or floor (or both) will give the best bass performance. It does not matter which way the sub is pointing.



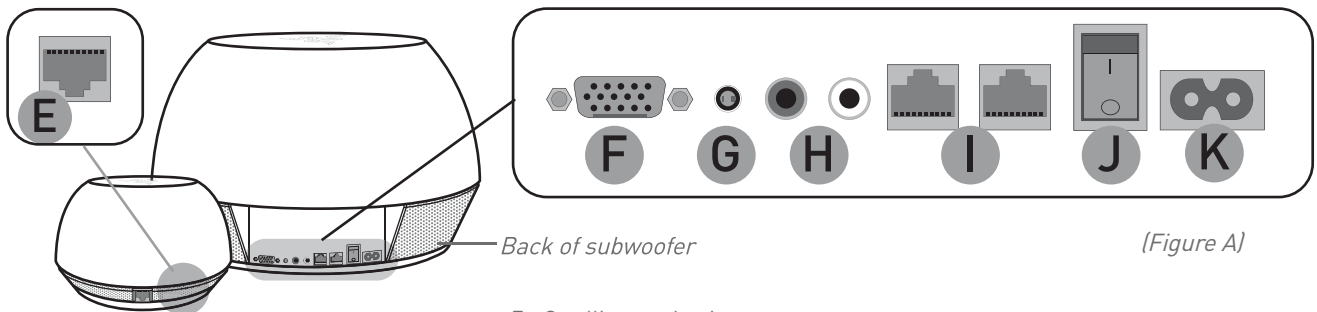
CONNECTING THE RAZER MAKO™ COMPONENTS

First locate the Razer Mako™ components and the location of the relevant connections as shown in Figure A.



(Figure A)

- A Satellite speaker ~ left
- B Subwoofer/amplifier
- C Control pod
- D Satellite speaker ~ right



(Figure A)

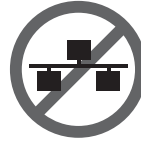
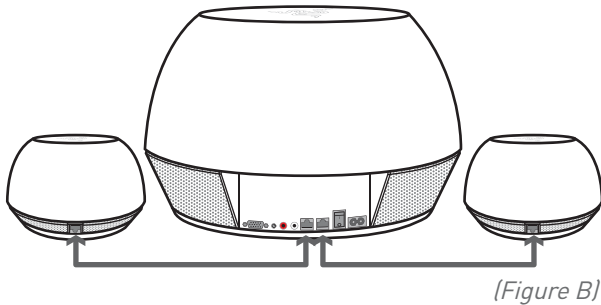
- E Satellite speaker input
- F Control pod connector
- G Line 1 (3.5mm mini-jack)
- H Line 2 (RCA connectors)
- I Satellite speaker output
- J On/off switch
- K Main power input*

*Please note that in the US, the plug will be polarized and can only be inserted one way.

Next, connect both the satellite speakers and the control pod as shown in Figure B. Ensure that the left satellite is connected to the left jack and the right satellite to the right jack on the subwoofer.

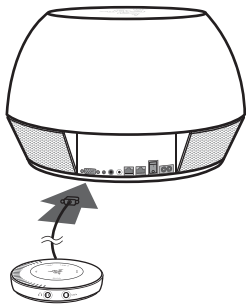
NOTE: If either satellite cable is removed while the system is active, the Razer logo on the Control Pod will flash for up to 1 minute. If the problem is not corrected within that time, the system will turn off automatically. No user adjustments will be possible while the light flashes due to a disconnected satellite cable.

NOTE: If either cable is removed while attempting to turn on the system, the Razer logo will flash for 10 seconds. After 10 seconds, it will return to the standby state.



DO NOT insert the speaker cables into an ethernet LAN port.
DO NOT insert an ethernet cable into the Razer Mako™

When connecting the Control Pod, be sure to secure the plug with the two screw knobs.



DO NOT connect to a monitor or PC graphics port.

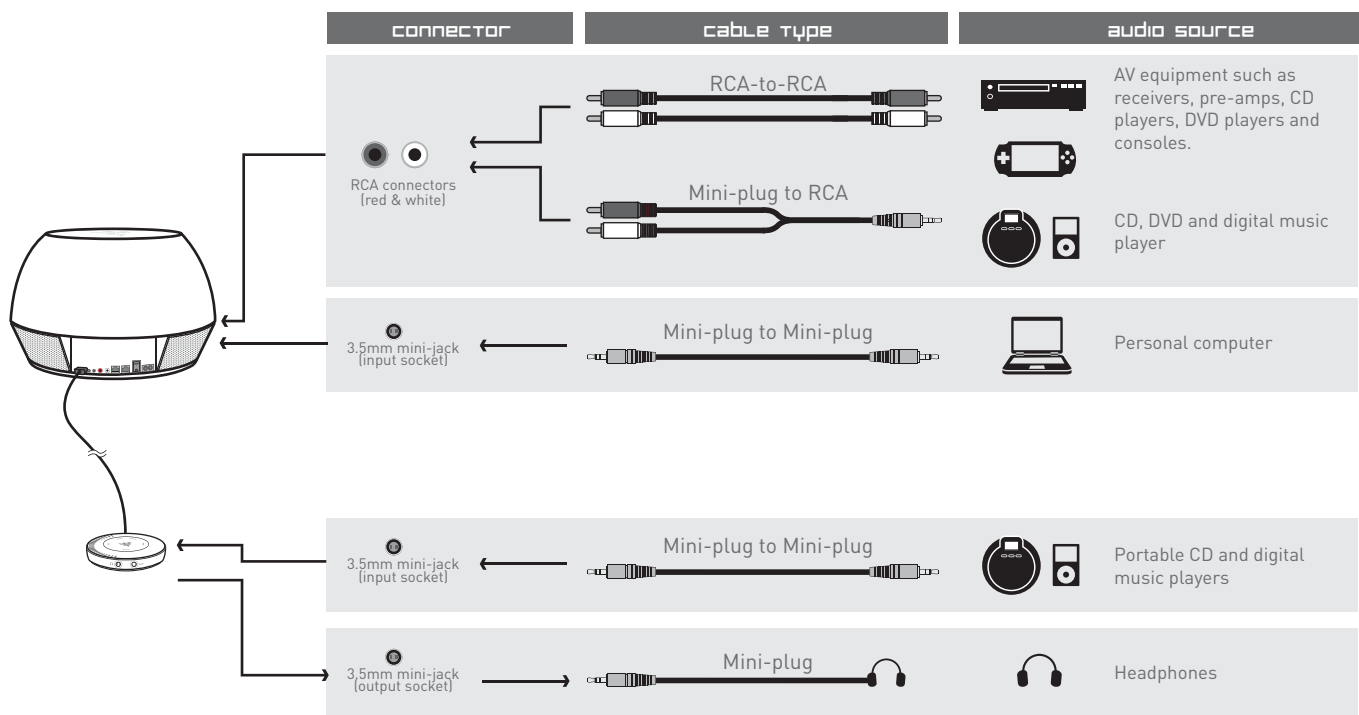


The Control Pod connector is not a VGA monitor connector. Do not connect the Control Pod to a video source. Likewise, do not connect a monitor to the subwoofer. VGA monitor extension cables cannot be used with the Razer Mako™ system Control Pod or subwoofer.

CONNECTING THE SOUND SOURCE

Connect your preferred sound source with the cables and jacks indicated in Figure C.

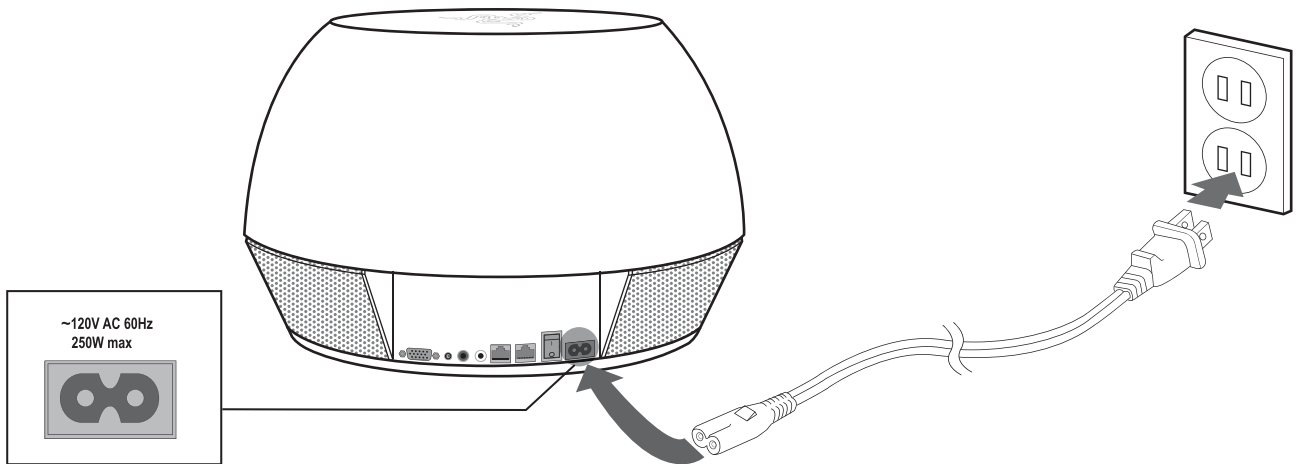
(Figure C)



If you're connecting your computer as your sound source, we recommend setting the volume to about 75% of full volume using the computer or sound card's audio controls. Ensure that the volume is turned ON in your computer, soundcard, media player, or application settings.

powering the razer mako™

Use the provided AC power cord to connect the subwoofer to a suitable AC power source. Please read the “Important Safety Information” section at the beginning of this guide carefully before plugging in the Razer Mako™.



For US*, Japan and Taiwan
- Voltage: 100-120V

* Please note that in the United States, a polarized plug is used.
It can only be inserted one way.



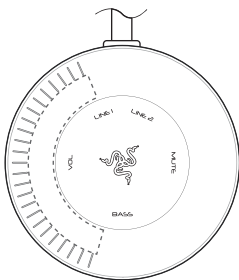
For France, Germany, Sweden, Switzerland and Korea
- Voltage: 220-240V



For UK, Singapore, India and Hong Kong
- Voltage: 220-240V

control pod operation

All functions on the Control Pod are activated by a single finger-touch.



Power on/standby switch

LINE 1 Line 1 select (3.5mm mini-jack)

LINE 2 Line 2 select (RCA connector)

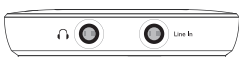
MUTE Turn muting on or off

BASS Bass adjustment mode

VOL Volume adjustment mode



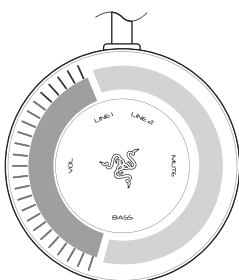
Control Touch Area



Amplified headphone output

Line In

Line level input



CONTROL TOUCH AREA


The Control Touch Area allows users to adjust volume or bass level by using a single finger to touch or drag along the arc.

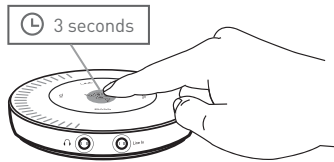
ACTIVATION AREA

To wake the Control Pod from dimmed mode, touch anywhere along the grey area. Functions that are active will glow brightly, while functions that are not active, but can be activated, will be dim.

USING THE CONTROL POD

The Control Pod incorporates an intuitive touch sensing interface in its laser-etched polycarbonate control surface, instead of traditional mechanical buttons. Lightly touch the surface of the Control Pod to operate your system.

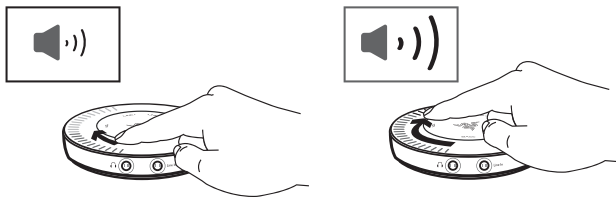
Touch () for 3 seconds for power or standby.



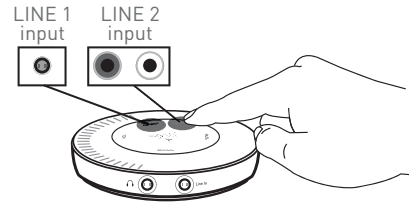
To operate, touch the desired function name (e.g. LINE 1 or MUTE). Remove finger from surface once a visual or audible change has occurred.

NOTE: Use only one finger to tap or slide on the Control Pod. More than one finger on the surface may interfere with the operation of the Control Pod. Also ensure that both finger and surface are dry, as moisture may impair the performance of the touch sensor.

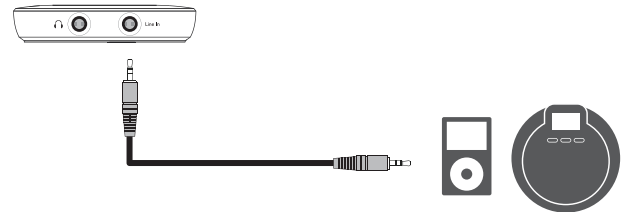
To adjust the volume and bass levels, slide one finger on the area inside the level bar on the left side. Red color segments indicate levels above 2/3 of full volume.



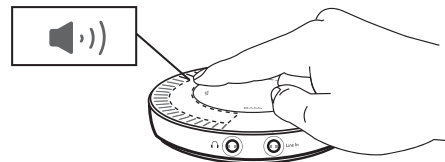
Touch the Line 1 or Line 2 inputs to select the audio source.



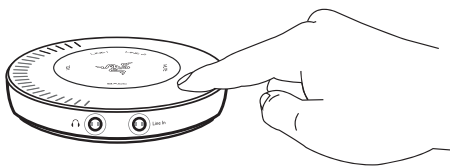
NOTE: You may select the AUX input directly by inserting a 3.5mm connector from an MP3 player or other device into the AUX input on the Control Pod. Doing so will automatically select the AUX input as the source.



Adjust the volume by sliding a finger along the area directly to the right of the level indicator lights.

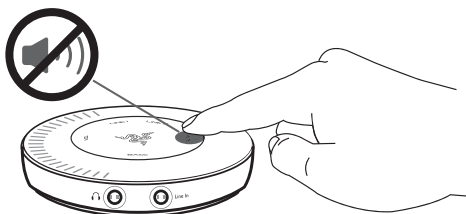


Touch the activation area of the Control Pod to illuminate the Control Pod display.



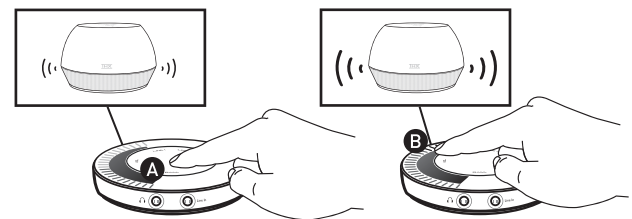
Touch the MUTE indicator on the Control Pod to silence the system. Touch MUTE again to return the system to the original volume level.

NOTE: When muted, no controls other than MUTE will work.



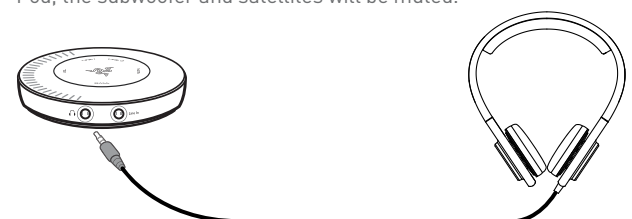
To adjust the subwoofer bass level, first touch the BASS indicator on the Control Pod (A). When the BASS indicator is lit on the Control Pod, use the Control Touch Area (B) to set the bass level.

NOTE: After several seconds of inactivity, the Control Pod Control Touch Area returns to its normal state for volume adjustment.



To connect a headphone, insert the 3.5mm mini-plug into the headphone mini-jack of the Control Pod."

NOTE: When a headphone mini-plug is inserted into the Control Pod, the subwoofer and satellites will be muted.



TROUBLESHOOTING

- If Control Pod lights are off; ensure that
 - the Control Pod connector is securely attached to the subwoofer.

Note that the control pod plug is similar to a VGA plug used for a video monitor. Take care not to plug the Control Pod into a video outlet.
Do not plug a video monitor into the subwoofer.
- If any of the plugs cannot be inserted, ensure that
 - there are no objects obstructing any of the plug openings.
 - in the case of the Control Pod connector, check that there are no bent pins.

In the event any of the pins are bent in the connector, you may try straightening them with small needle nose pliers. If this does not work, contact Razer customer service.
- If there is no sound, ensure that
 - power, input and satellite cables are securely attached. Both satellite cables must be connected. In the event that one cable is not connected, there will be no sound from the system.
 - the sound source is working. This is most easily checked by unplugging the 3.5mm audio cable from the computer.
 - the computer audio is not muted.

If you cannot confirm that the computer audio is functioning, try a different source such as an MP3 player headphone output as a source for the system.

- If the sound is muffled, ensure that
 - objects are not obstructing the sound output slot of the satellite speakers.
 - the cable connection on each satellite is facing away from the listening area.
 - the stereo audio input cable is securely attached at both ends.

- the equalizer controls on music software (such as iTunes) are set to "flat" or "off"
- If the sound is too shrill (not enough bass), ensure that
 - the stereo audio input cable is securely attached at both ends.
 - the bass level is adjusted for louder bass.
 - the equalizer controls on music software (such as iTunes) are set to "flat" or "off"
- If the sound has too much bass, ensure that
 - the bass level is adjusted for lower bass.
 - the equalizer controls on music software (such as iTunes) are set to "flat" or "off."
- If the sound is distorted, ensure that
 - the volume controls on the computer are not set at too high a level.
 - the stereo audio input cable is securely attached at both ends.
- If there is radio interference from a radio station or cell phone, ensure that
 - the system is not placed too near a source of interference. Move the speakers to a different location to avoid the interference.
 - In the case of mobile phone interference, try moving the mobile phone.

For more detailed information and other troubleshooting tips, please visit www.razerzone.com.

CARE AND MAINTENANCE

Use a clean damp cloth to wipe or dust fingerprints off the speakers and Control Pod. Do not use any cleaning fluids or solvents, as these may damage the system.

LEGAL INFORMATION

The Razer Mako is jointly-developed by Razer and THX Ltd, designed and engineered in the USA by THX Ltd and manufactured in an ISO9002 facility under license from THX Ltd. Patents Pending.

INTELLECTUAL PROPERTY INFORMATION

©2007 Razer Audio Pte Ltd. All Rights Reserved. Razer™, the Razer Triple-Headed Snake logo, the Razer distressed word logo, MAKO and other trademarks contained herein are the property of Razer Audio Pte Ltd and/or its affiliates, registered in the United States or other countries.

THX and the THX logo are registered trademarks of THX Ltd.

ClassHD is a registered trademark of Audera.

iTunes is a trademark of Apple Inc., registered in the United States and other countries.

All other trademarks are the property of their respective owners.

Razer™ assumes no responsibility for any errors that may appear in this manual. Information contained herein is subject to change without notice. Actual Product may differ from pictures.

Razer™ may have patents, patent applications, trademarks, copyrights, trade secrets or other property rights, intellectual and otherwise concerning the Product and subject matter in this manual (both registered and unregistered). Except as is provided in any written license agreement provided by Razer™, furnishing of this manual does not give you a license to any such patents, trademarks, copyrights or other intellectual property rights, whether registered or otherwise.

REGISTER YOUR RAZER™ PRODUCT

Please visit www.razerzone.com for product online registration. What you'll get:

- 1 year's limited manufacturer's warranty
- Free online support

TECHNICAL SUPPORT

For technical support, please visit www.razersupport.com.

LIMITED ONE (1) YEAR PRODUCT WARRANTY

Razer Audio Pte Ltd (hereinafter referred to as "Razer") warrants the Razer Mako (the "Product") to be free from defects in materials and workmanship (subject to the terms and conditions set forth below) for a period of one (1) year from the date of retail purchase, provided that the Product is used in accordance with all safety and operational procedures and instructions recommended herein and in the proper manner in which the Product is meant to be used.

This warranty will not be valid if a claim on the warranty is due to misuse, abuse, negligence, acts of God, floods, fires, earthquakes or other external causes, accidents, unauthorized commercial use, operation of the Product outside the recommended parameters contained herein, modification of the Product, failure to follow Product instructions or improper operation, maintenance or installation. Any repairs or attempted repairs other than by Razer or someone authorized by Razer shall also invalidate this warranty. The warranty shall also be invalidated if any serial number or date stamp has been altered or removed from this Product. This warranty does not cover cosmetic damages, including but not limited to scratches or dents that would not otherwise effect the Product's functionality or materially impair your use of the same.

Notwithstanding, if a defect arises and a claim on the warranty is received by Razer within the applicable warranty period, Razer will (at its sole option) either (1) repair the Product or the defective parts at no charge, using new or refurbished replacement parts, (2) exchange the Product with a Product that is new or which has been manufactured from new or serviceable used parts and is at least functionally equivalent to the original Product, or (3) refund the purchase price of the Product. Such repairs, exchanges or refunds as provided herein are your exclusive remedies for the Product. Proof of purchase in the form of a bill, invoice, receipt or other similar document may be required and will serve as prima facie evidence of the purchase date and an indication of the applicable warranty period. When a Product or part is exchanged or replaced, any replacement or exchanged Product or part will become your property and what was returned to Razer will become Razer's property.

This warranty set forth herein replaces and/or supersedes all other warranties and your remedies for breach of warranty are expressly limited to those herein set forth. No Razer supplier, dealer, agent, or employee is authorized to make any modification, extension or alteration of the warranty or to substitute products or services, lost profits, loss of information or data, or any other special, indirect, consequential or incidental damages arising in any way out of the distribution of, sale of, resale of, use of, or inability to use any Product subject to warranty herein set forth.

Before lodging a claim on the warranty, be sure to review the online help resources at www.razersupport.com. If the Product is still not functioning properly after making use of these resources, please contact Razer through www.razersupport.com

or your authorized distributor or dealer. You may be required to assist with the diagnosis process to verify and ascertain any issues which you may be facing with the Product. Service options, parts availability and response times may vary depending on the country where in which a claim on the warranty is lodged. You may be responsible for shipping and handling charges as well as any applicable customs, duties or taxes if shipment and handling of the Product is required and such charges are incurred.

LIMITATION OF LIABILITY

Razer expressly disclaims all other warranties to the fullest extent allowed by law including, but not limited to, the implied warranties of merchantability, fitness for a particular purpose, non-infringement of third-party rights with respect to the documentation and hardware. In no event will Razer™ be liable for any special, incidental, indirect, punitive or consequential damages, or for personal injury or death whatsoever, even if Razer had been informed of the possibility of the same. In the event that some jurisdictions do not allow the limitation or exclusion of such warranties listed above, the above limitation or exclusion may not apply. The above limitation or exclusion do not exclude, limit or suspend or seek to exclude, limit or suspend any liability made compulsory at law. The above limitation or exclusion will also not apply in case of personal injury or death where and only to the extent that applicable laws impose such liability.

NOTICE OF FCC COMPLIANCE

This device complies with part 15 of the FCC Rules. Operation is subject to the following two conditions: (1) This device may not cause harmful interference, and (2) this device must accept any interference received, including interference that may cause undesired operation.

Note: This equipment has been tested and found to comply with the limits for a Class B digital device, pursuant to part 15 of the FCC Rules. These limits are designed to provide reasonable protection against harmful interference in a residential installation. This equipment generates uses and can radiate radio frequency energy and, if not installed and used in accordance with the instructions, may cause harmful interference to radio communications. However, there is no guarantee that interference will not occur in a particular installation. If this equipment does cause harmful interference to radio or television reception, which can be determined by turning the equipment off and on, the user is encouraged to try to correct the interference by one or more of the following measures:

- Reorient or relocate the receiving antenna
- Increase the separation between the equipment and receiver
- Connect the equipment into an outlet on a circuit different from that to which the receiver is connected
- Consult the dealer or an experienced radio/TV technician for help

WEEE

Correct Disposal of This Product (Waste Electrical & Electronic Equipment)

(Applicable in the European Union and other European countries with separate collection systems)

This marking shown on the product or its literature, indicates that it should not be disposed with other household wastes at the end of its working life. To prevent possible harm to the environment or human health from uncontrolled waste disposal, please separate this from other types of wastes and recycle it responsibly to promote the sustainable reuse of material resources. Household users should contact either the retailer where they purchased this product, or their local government office, for details of where and how they can take this item for environmentally safe recycling. Business users should contact their supplier and check the terms and conditions of the purchase contract. This product should not be mixed with other commercial wastes for disposal.

