



NEW RAZER BLADE WINDOWS 8 UPGRADE INSTRUCTIONS

Windows 8 Upgrade Disclaimer:

Please note after updating to Windows 8 your Blade will not be able to use its internal recovery partition to down grade back to Windows 7, if you would like to go back to Windows 7 please contact Razer Blade support for recovery media.

It is recommended to back up all your data to an external media before attempting any software upgrade.

Please follow the 7 Steps below to upgrade your New Blade to Windows 8.

Step 1: Purchase and Download the Windows 8 Upgrade.

Step 2: Download and Run the latest firmware update to your Razer Blade at www.razersupport.com/downloads or by clicking the hyper link below.
[Firmware Updater](#)

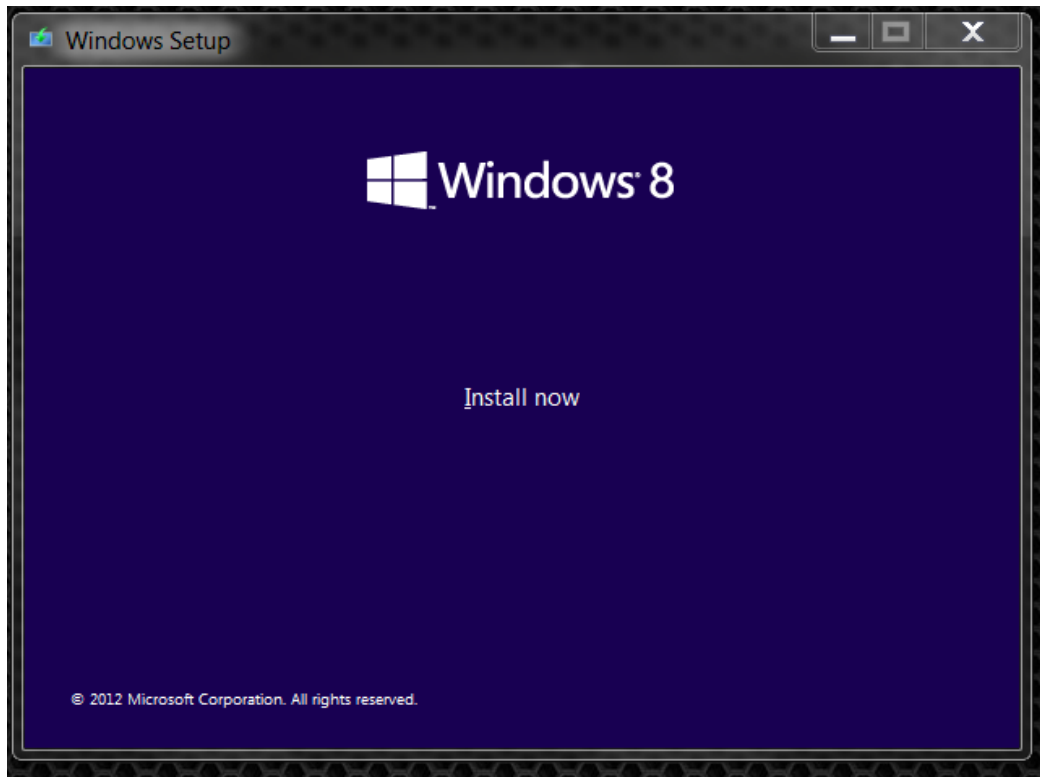
Step 3: Before starting the upgrade please un-install the following applications and drivers and restart your Blade when prompted to do so.

- Dataplex
- Microsoft Security Essential's
- Intel 3.0 USB driver
- All Intel PROSet applications \ Drivers

Step 4: Start the Windows 8 **Upgrade**. From the file that was downloaded earlier from Microsoft. This file will give you the ability to run the upgrade from your computer \ Make a Bootable USB disk (USB Flash drive required) \ Make a Bootable DVD (Blank DVD, external optical drive required) The following steps will be the same for all methods.

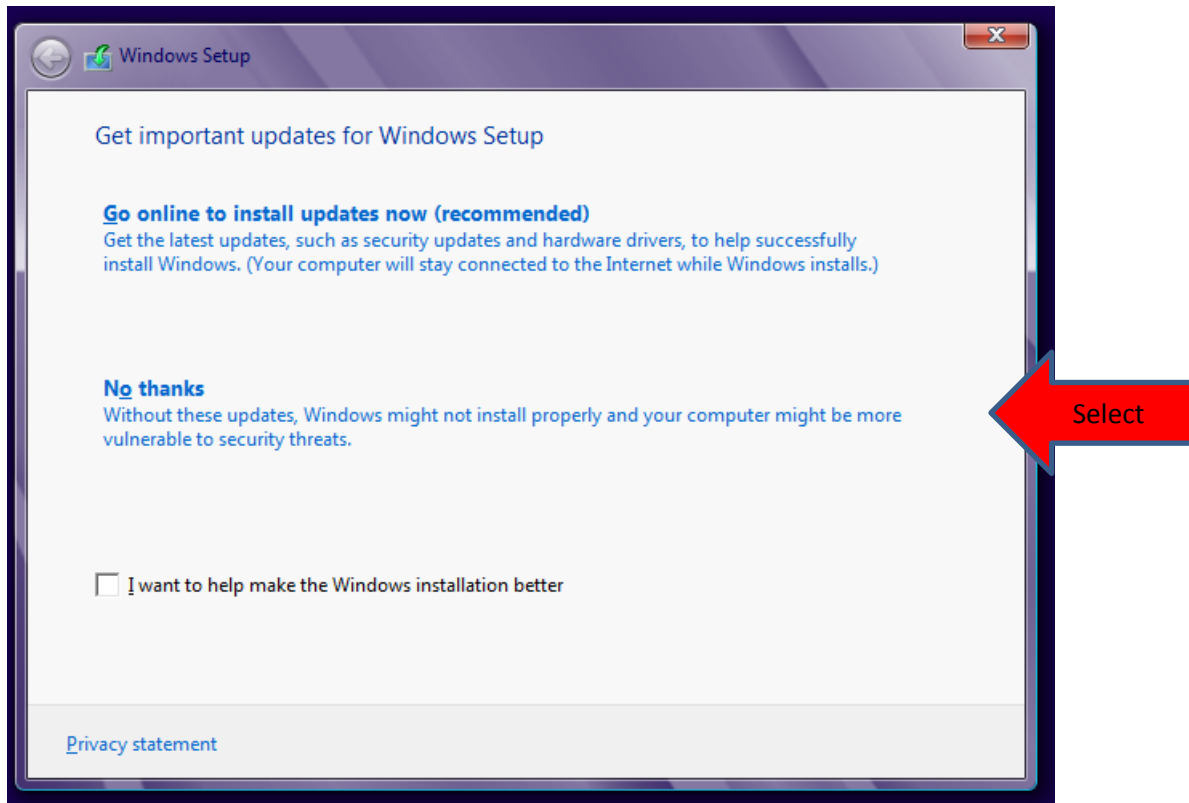


Step 5: Click Install Now. And follow the on screen prompts. (Pictures below)



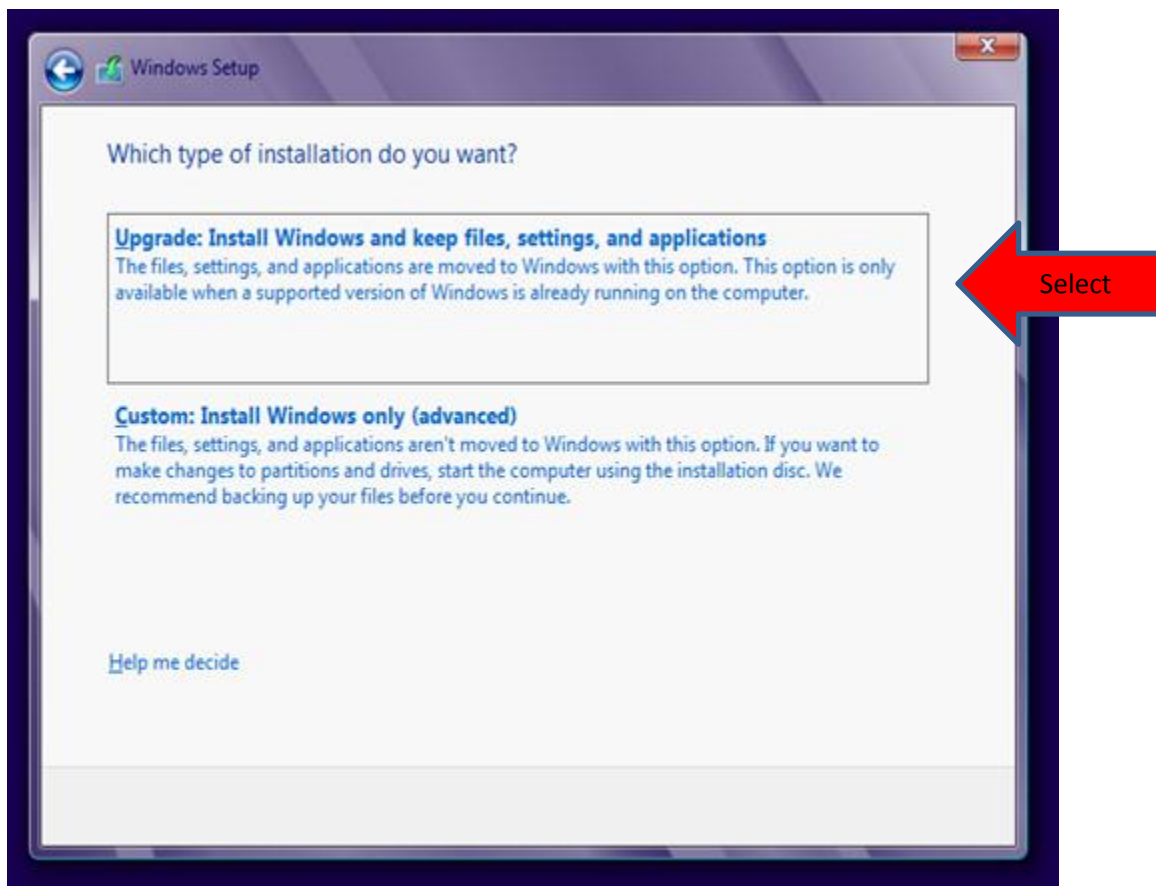


- Please choose not to install Windows updates at this time.



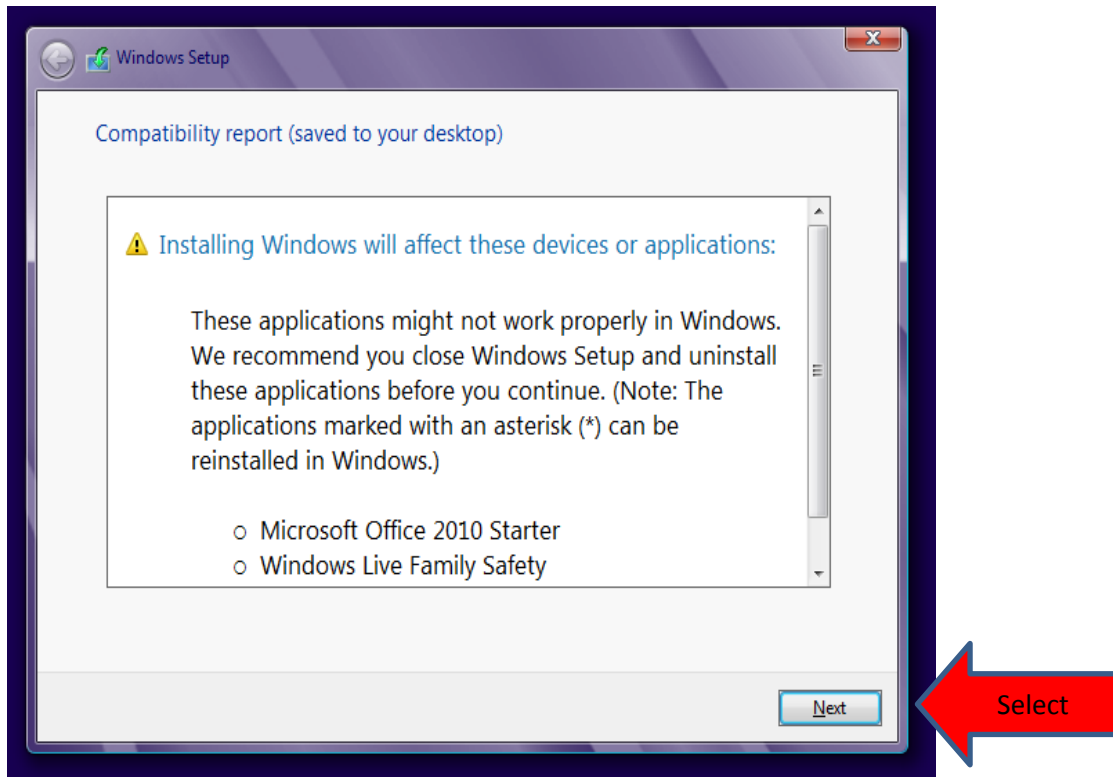


- Please select “Upgrade” from above. Selecting “Custom” will allow you to reformat your hard drive and delete all your data.



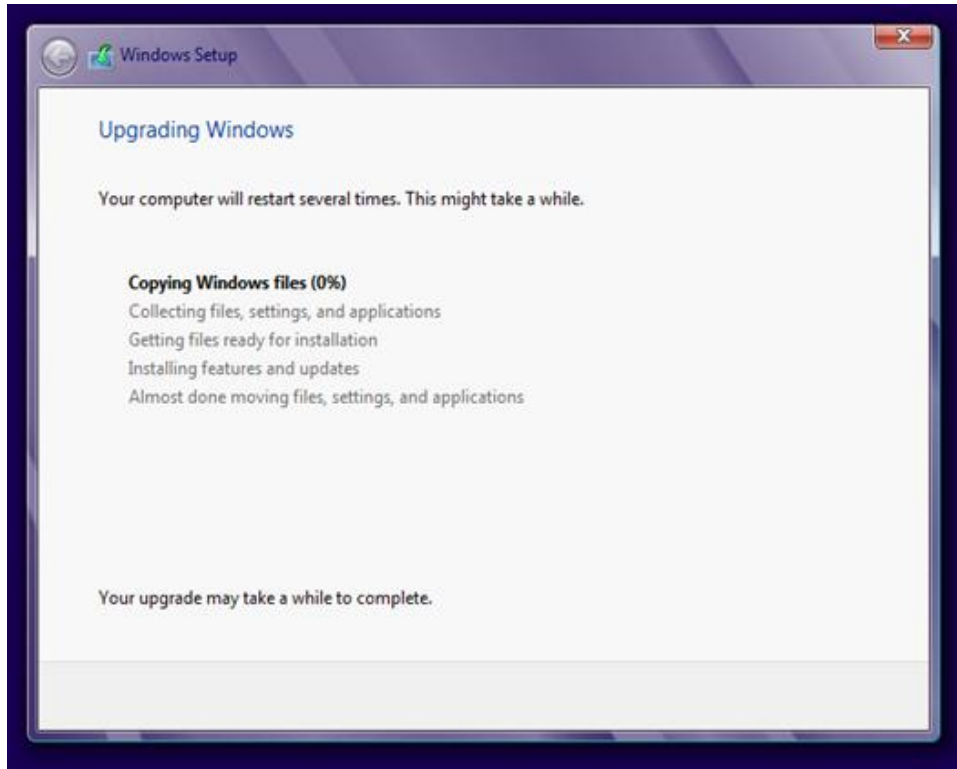


➤ Click Next





- Your screen should show the following and the upgrade should start.



Step 6: At this point Windows 8 is upgrading your New Blade & will restart several times during this process. This can take up to an hour for the upgrade to complete.

Step 7: Welcome back to Windows. Please download and install the updated Windows 8 Drivers* and Razer Synapse. You can find the drivers at the hyperlinks below or also at www.razersupport.com/downloads.

- Synapse [Synapse 2.0](#)
- Win 8 Drivers [Win 8 Drivers](#)

*Please install Realtek Audio driver before installing the Dolby Home Theater application.

Now start Enjoying Windows 8.