



# FIRMWARE INSTALLATION INSTRUCTIONS

RAZER CHARGING PAD CHROMA FIRMWARE UPDATER GUIDE

---

## UPDATER INFORMATION

### APPLICABLE MODEL NUMBERS

- RC21-01600

### DRIVER NAME AND VERSION

ChargingPad\_FirmwareUpdater\_v1.01.01\_r1

Download Link: <https://rZR.to/VugSh>

### RELEASE NOTES:

- Support charging with complete lighting effect set by Synapse
- Fixed Xiaomi adaptor cannot output 12V at some corner issue
- Fixed Samsung phone full charge judge error bugs

---

## PREPARATIONS

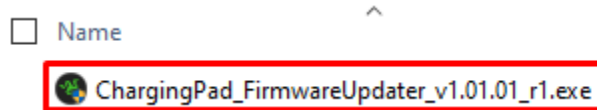
1. Make your laptop is plugged into a wall outlet and not just running on battery before proceeding.
2. Save any open documents on your computer and close all other programs before attempting the update.
3. Download the firmware from the link above.

**Note:** It is recommended to download and install the latest firmware version.

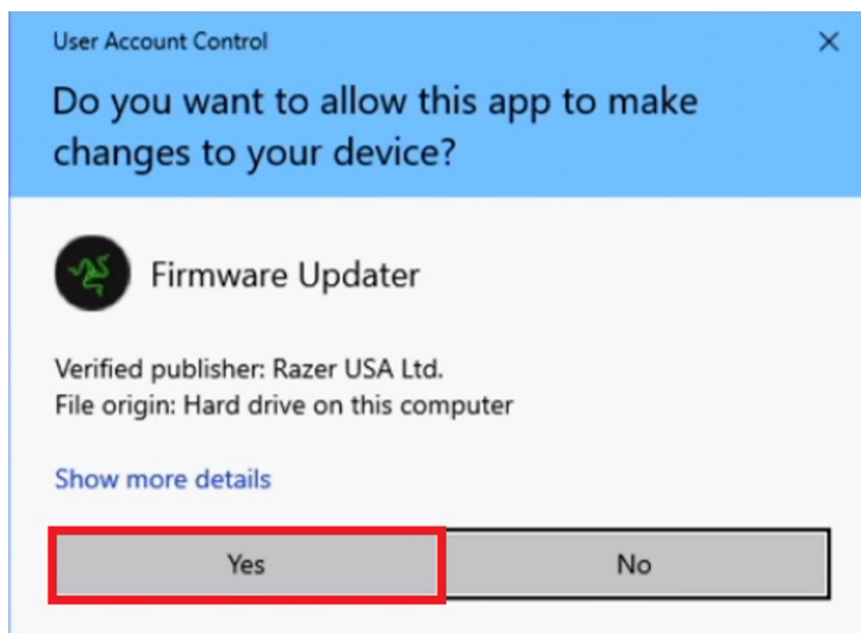
---

## INSTALLATION PROCESS

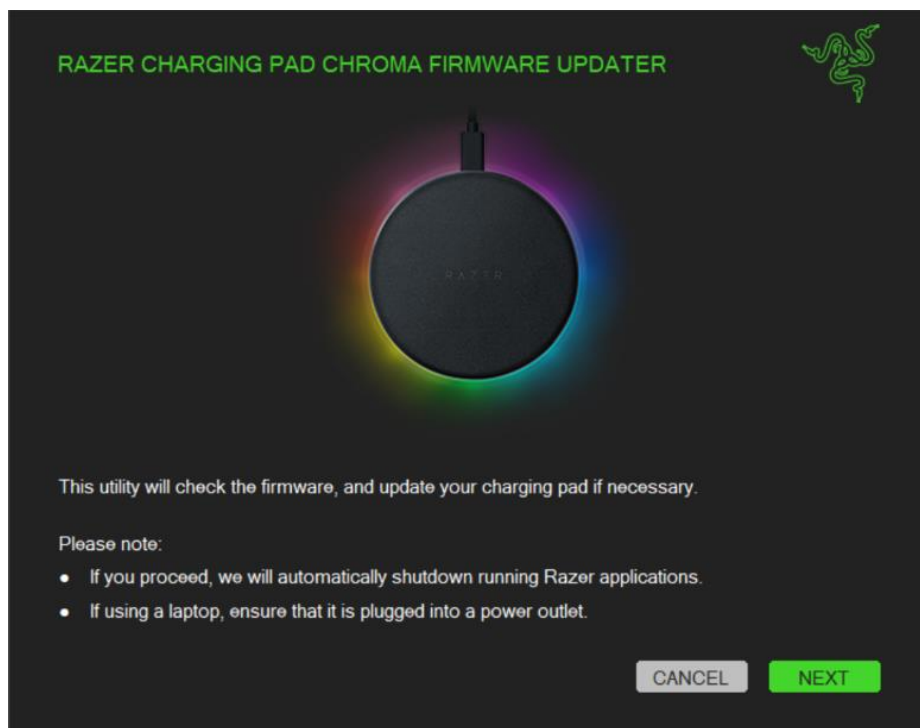
1. Run the updater as shown below:



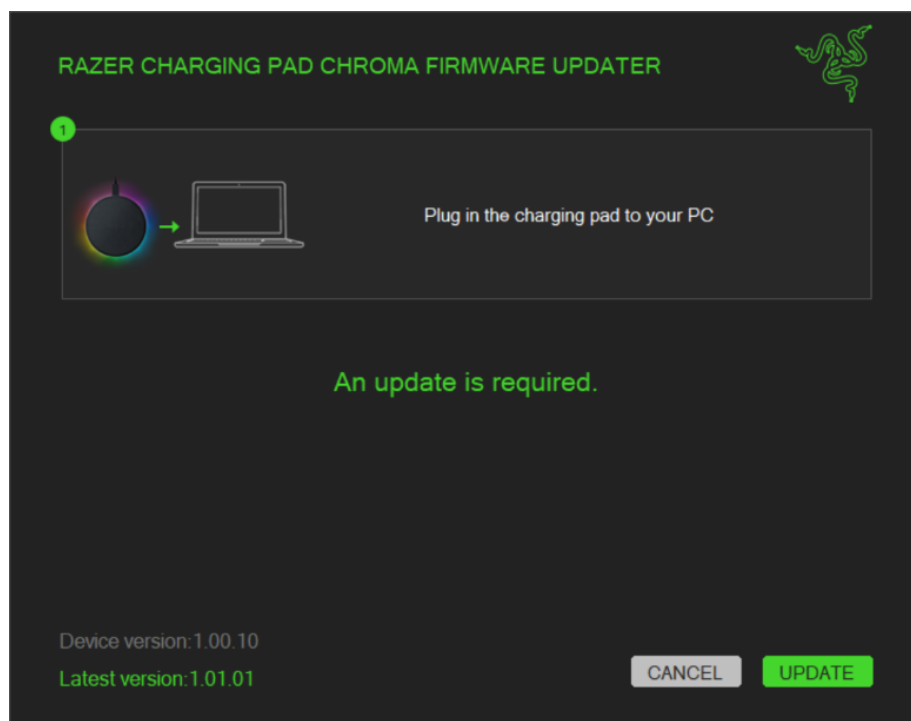
2. You may be prompted to confirm changes on your device by the User Account Control. Click "Yes" to confirm these changes.



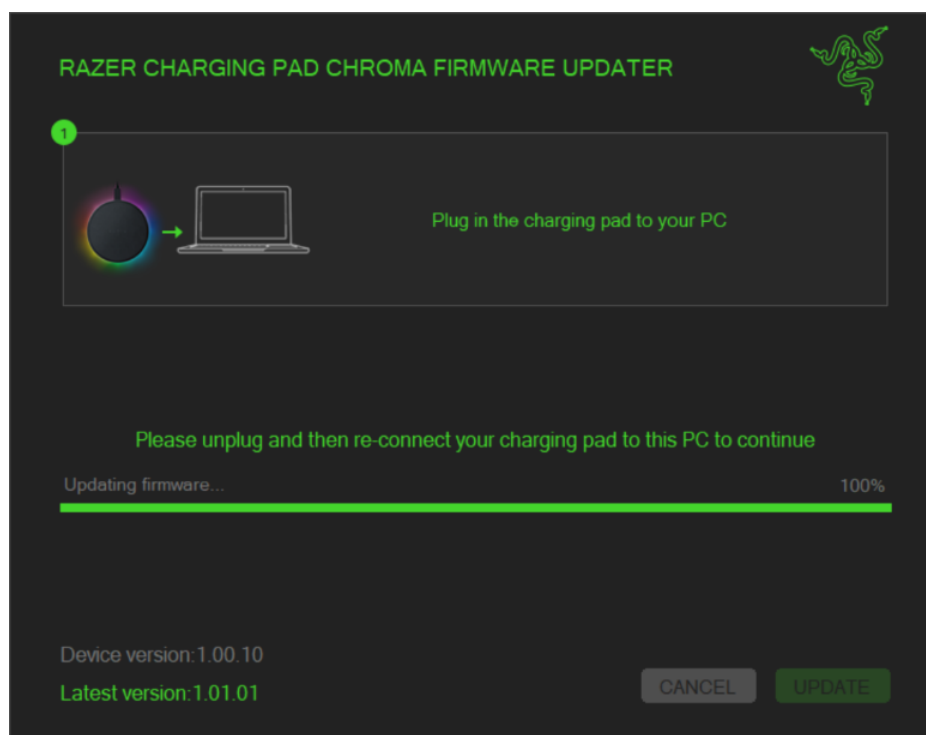
3. Click "NEXT" to proceed. The installer will close all running Razer applications if you have not done so yet.



4. Connect the device to the computer and then click "UPDATE".



5. Wait until the update process is complete. Do not interrupt.



6. When the update is complete, click "CLOSE".

