



# FIRMWARE INSTALLATION INSTRUCTIONS

RAZER BLACKWIDOW CHROMA V2 FIRMWARE UPDATER GUIDE

---

## UPDATER INFORMATION

### APPLICABLE MODEL NUMBERS

- RZ03-0170

### DRIVER NAME AND VERSION

BlackWidow Chroma V2\_FirmwareUpdater\_v1.01.00\_r2.exe

Download Link : <https://rzr.to/axKmO>

### RELEASE NOTES:

- Same as v1.01.00
- Addresses a compatibility issue of the old updater with the new Windows RS5 updates

---

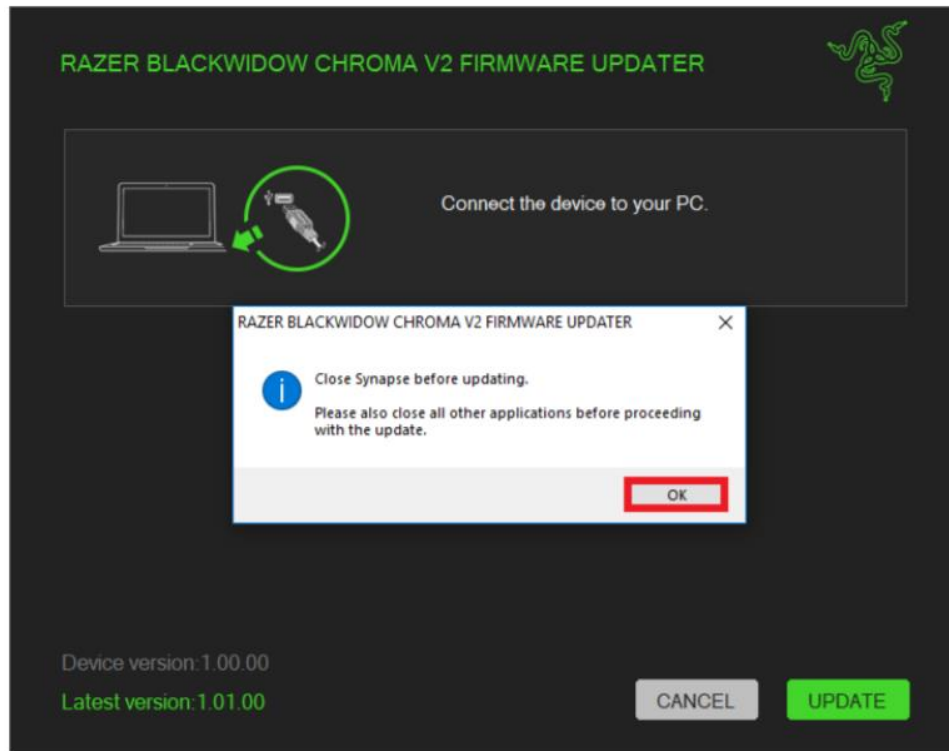
## PREPARATIONS

1. Make sure your laptop is plugged into a wall outlet and not just running on battery before proceeding.
2. Save any open documents on your computer and close all other programs before attempting the update.
3. Download the firmware from the link above.
4. Run the updater and follow the installation steps below:

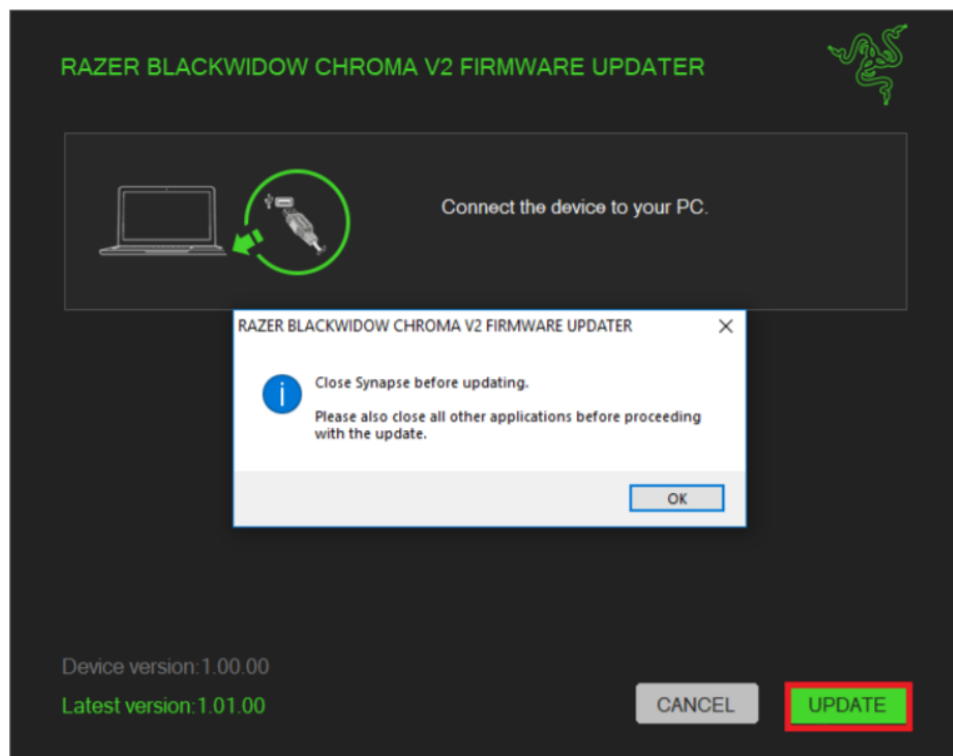
---

## INSTALLATION PROCESS

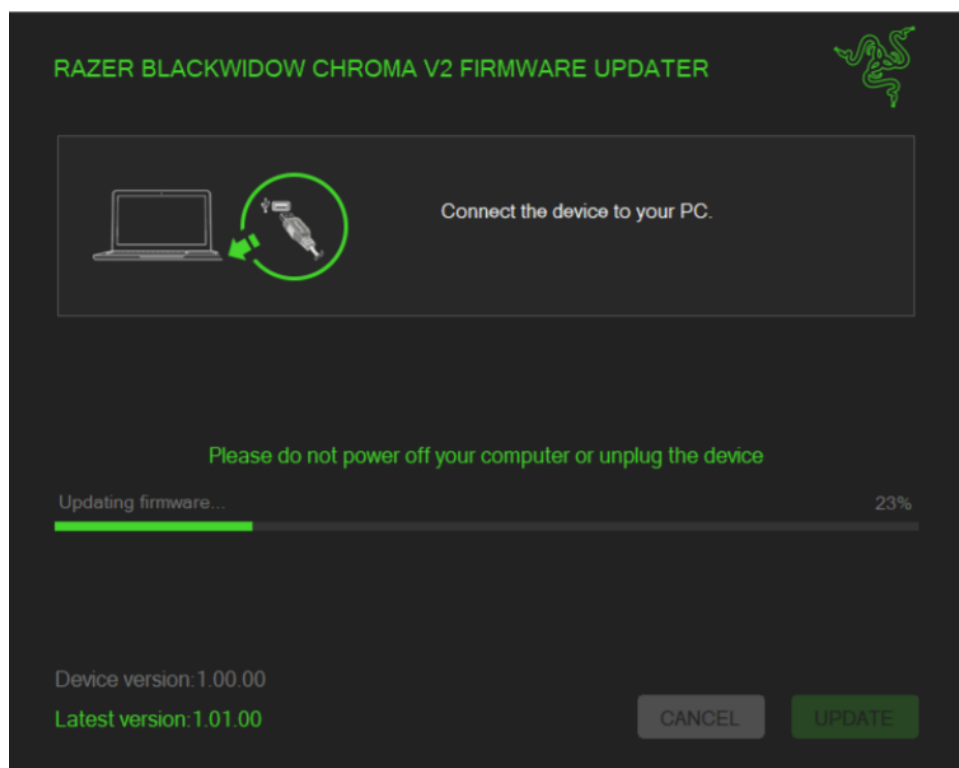
1. Download the firmware update by clicking the link found above.
2. Close Razer Synapse and all other running applications before proceeding with the update.
3. Run the downloaded firmware. If you have already closed all running applications, click "OK" to proceed.



4. Connect the device and click UPDATE.



5. Wait for the update to complete.



6. Once the firmware has been successfully applied, click "CLOSE" to exit the installer.

RAZER BLACKWIDOW CHROMA V2 FIRMWARE UPDATER



CONGRATULATIONS!

Your device has been updated to the latest firmware.

Device version: 1.01.00

CLOSE