
DRIVER INSTALLATION INSTRUCTIONS

APPLICABLE MODEL NUMBERS

- RZ09-03009

DRIVER NAME AND VERSION

Nvidia GeForce Experience App Version 3.18.0.102

INSTRUCTIONS

Note: This download is for the original driver that was installed on your Razer Laptop. Updates for this driver are available via standard Windows Updates. To ensure you have the latest driver installed on your Blade please make sure to apply all available updates from Windows.

Please follow the instructions below to download and install the original driver for your Blade. Following the installation, it is recommended to search for any available Windows Updates.






1. Ensure that your Blade is plugged into a wall outlet and not running on battery alone before proceeding.
2. Save any open documents on your computer and close all other programs before attempting this update.
3. Download the driver from the link below. You will need to right click the .zip folder and choose to extract the files to the location of your choice (such as your desktop).

<http://rzt.to/ZG9R8>

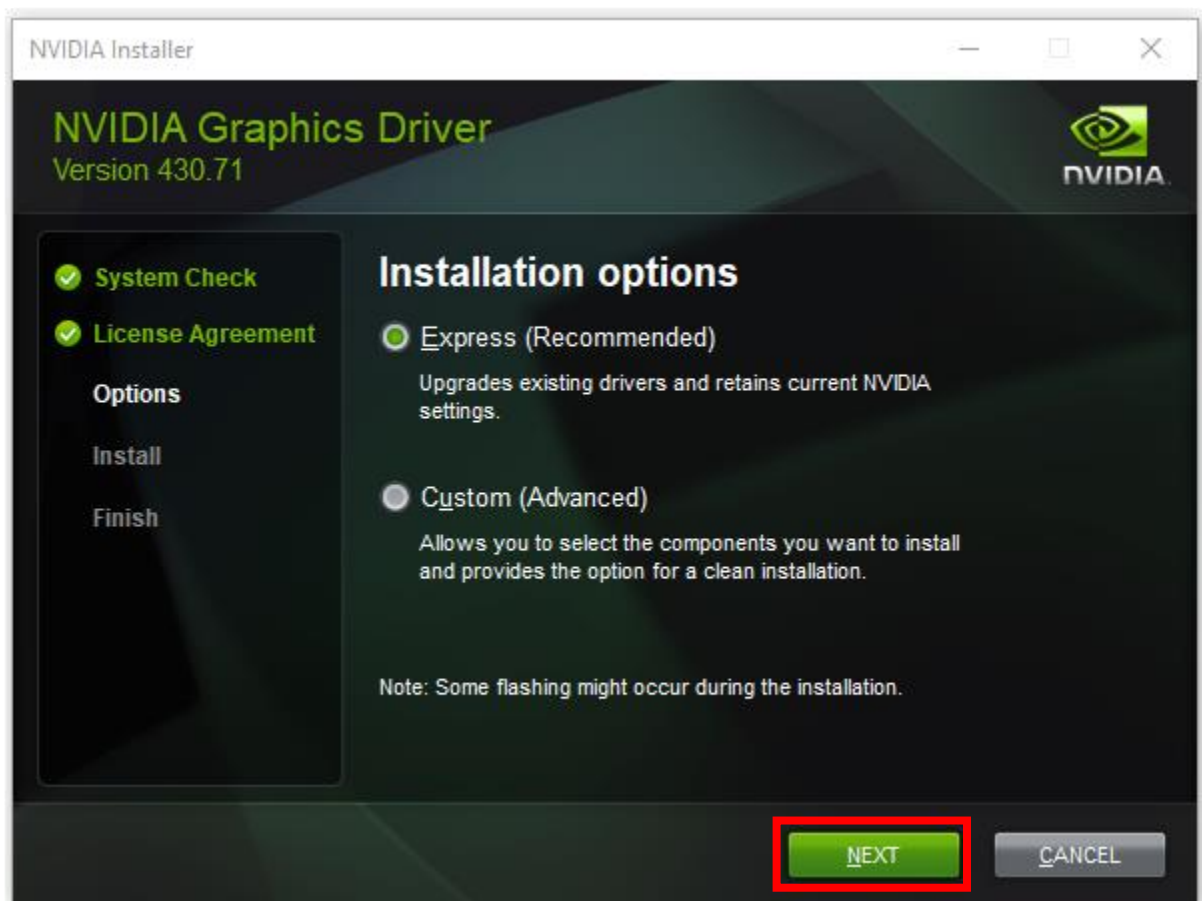
4. Once you have extracted the file proceed to the installation steps below.

INSTALLATION PROCESS

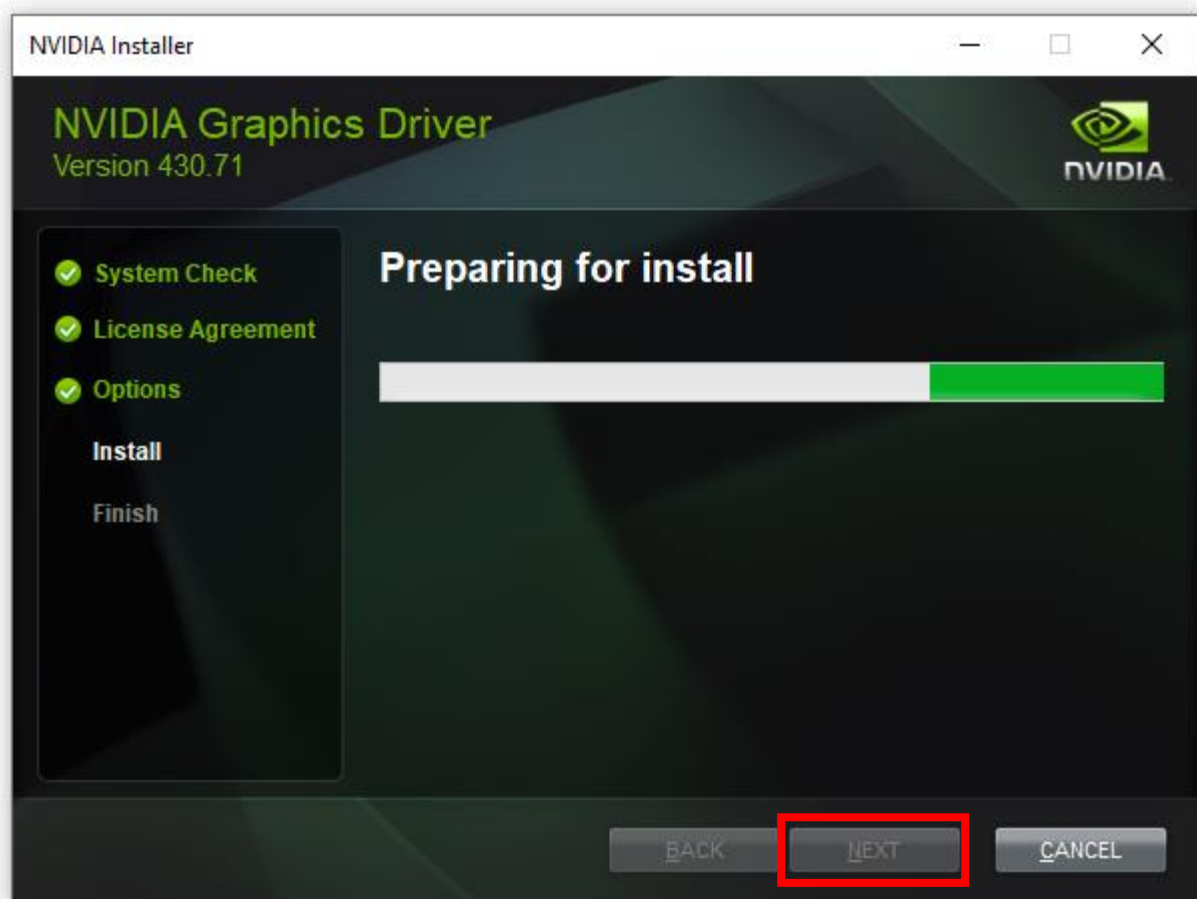
1. Double-click on the "setup.exe" file to initiate the installation process.

Name	Type	Size
 setup	Application	469 KB
 setup.cfg	CFG File	51 KB
 license	Text Document	27 KB
 EULA	Text Document	26 KB
 Display.Driver	File folder	

2. The User Account Control window may pop up to confirm changes that will be made by the application. Click "Yes" to allow the application to launch.
3. On the installation options window, select "Express (Recommended)" then click "NEXT" to continue.



4. Wait for the installation process to complete, then click "NEXT".



5. Once the installation is complete, click "CLOSE".

