
DRIVER INSTALLATION INSTRUCTIONS

APPLICABLE MODEL NUMBERS

- RZ09-03009

DRIVER NAME AND VERSION

Realtek LAN Driver 10.32.1206.2018

INSTRUCTIONS

Note: This download is for the original driver that was installed on your Razer Laptop. Updates for this driver are available via standard Windows Updates. To ensure you have the latest driver installed on your Blade please make sure to apply all available updates from Windows.

Please follow the instructions below to download and install the original driver for your Blade. Following the installation, it is recommended to search for any available Windows Updates.

1. Ensure that your Blade is plugged into a wall outlet and not running on battery alone before proceeding.
2. Save any open documents on your computer and close all other programs before attempting this update.
3. Download the driver from the link below. You will need to right click the .zip folder and choose to extract the files to a location of your choice.

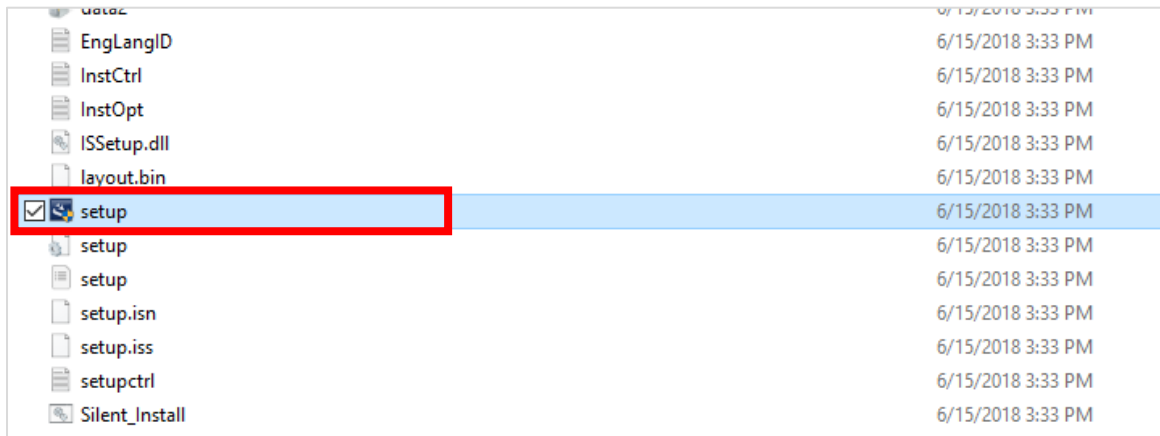
<http://rZR.to/0qy8f>

4. Once you have extracted the file proceed to the installation steps below.

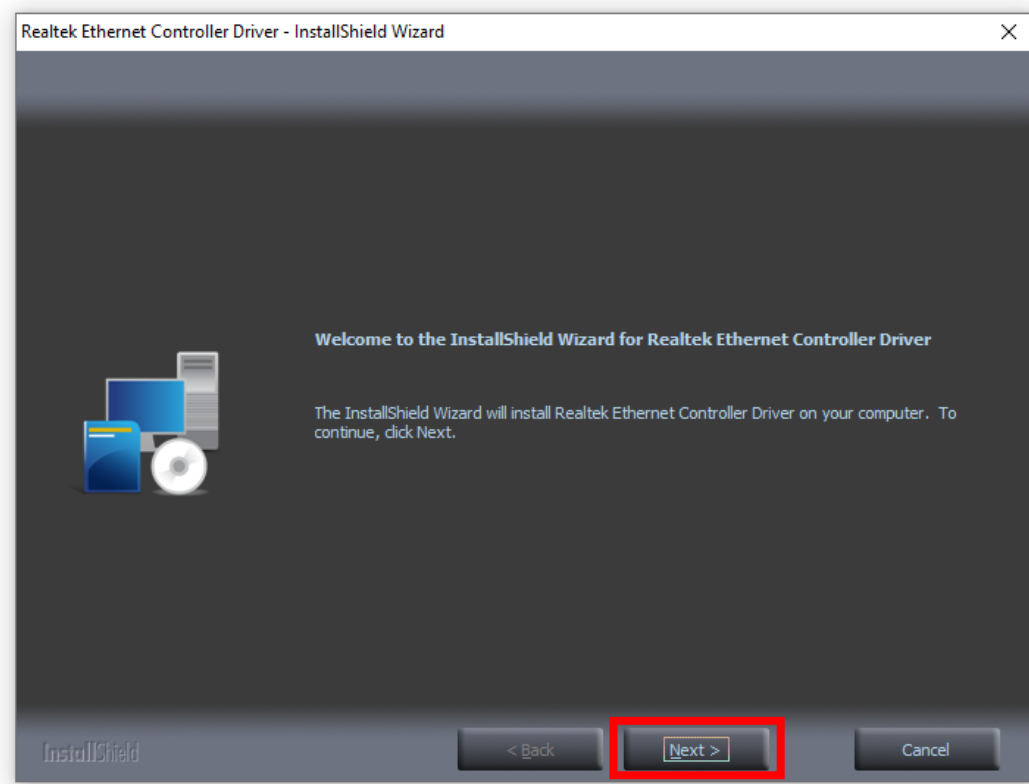
INSTALLATION PROCESS

For New Install

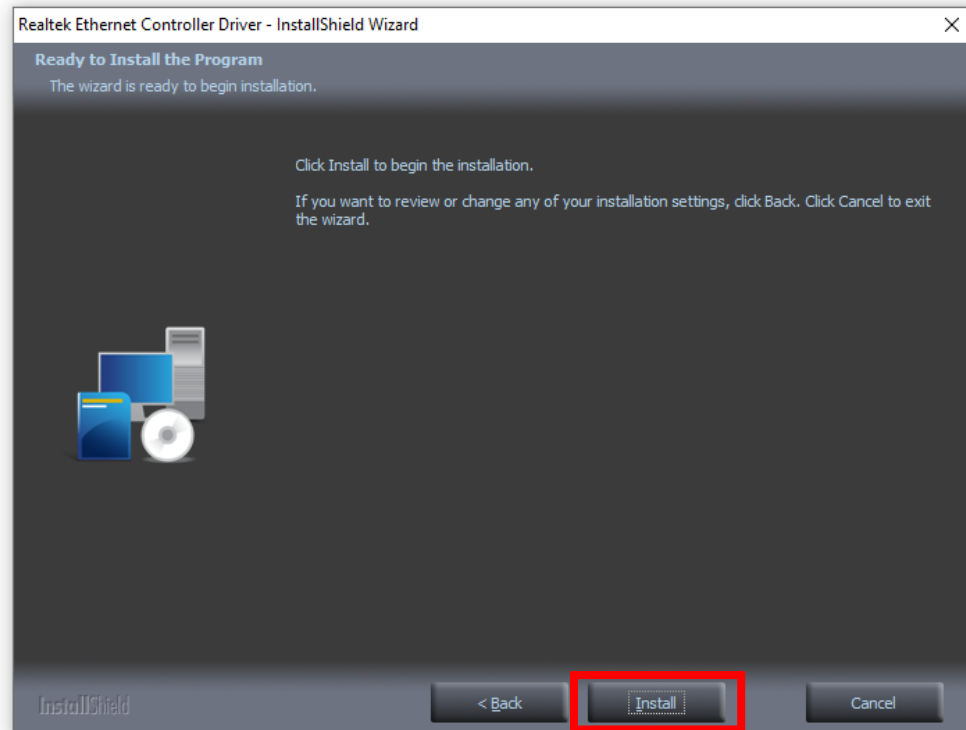
1. Double-click on the "Setup.exe" file to initiate the installation process.



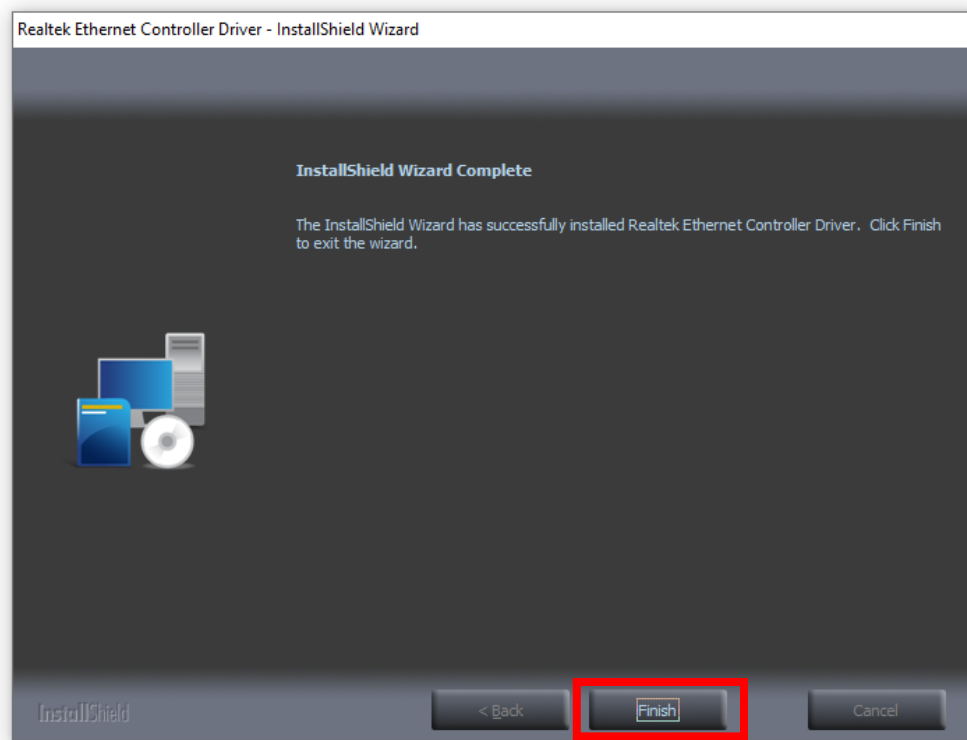
2. In the welcome screen, click "Next" to proceed with the installation.



3. After clicking "Next" you will be asked if you want to review or change your installation settings. Click "Install" to begin the installation.

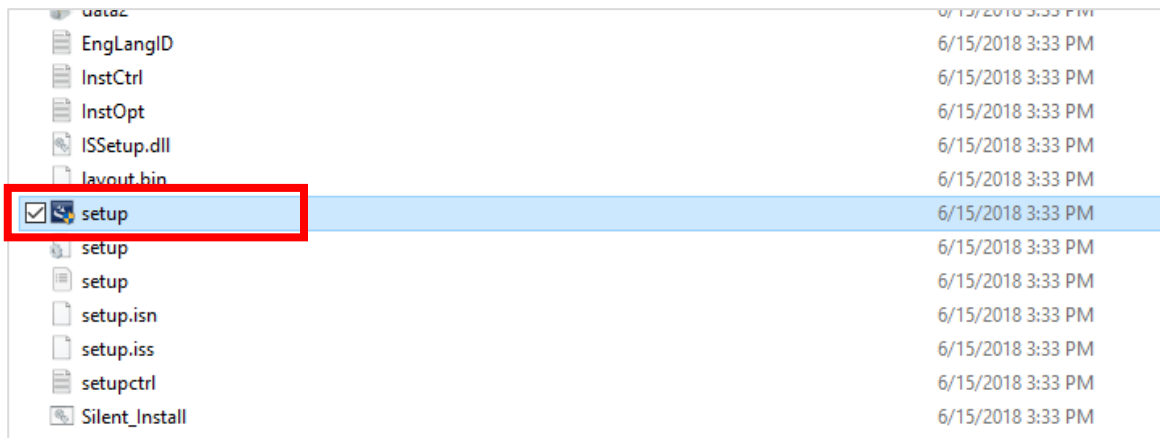


4. Once the installation process is complete, click "Finish" to close the window.

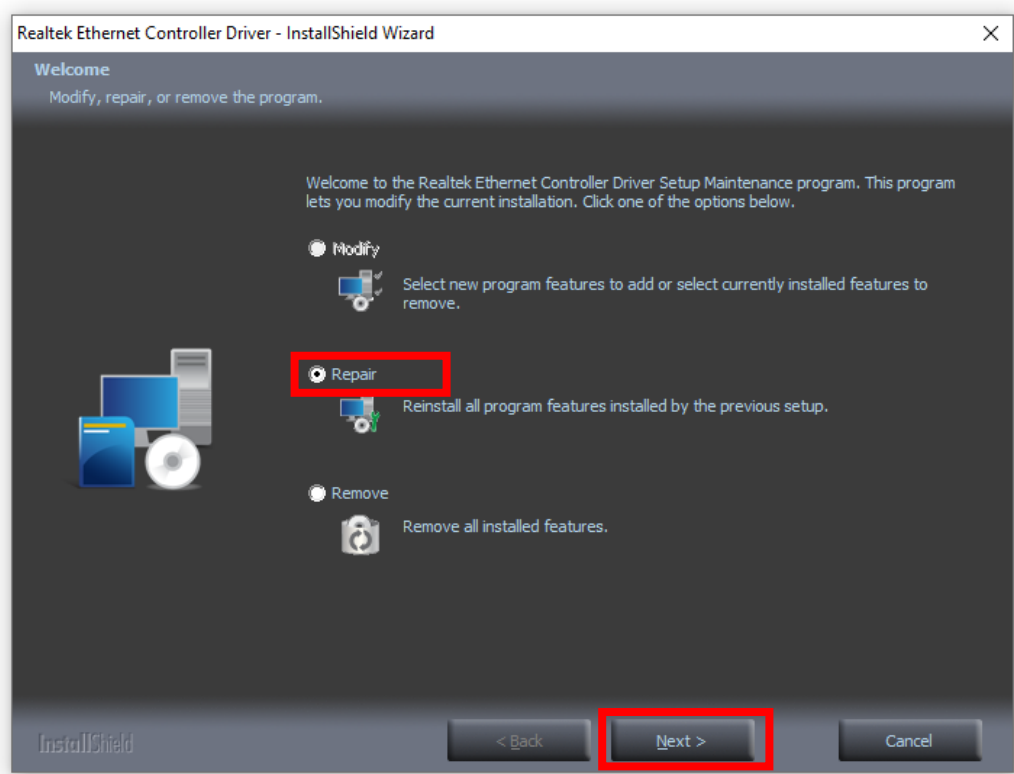


For Repair

1. Double-click on the "Setup.exe" file to initiate the installation process.



2. You will be asked to choose a setup type: Modify, Repair, or Remove. Choose "Repair" then click "Next".



3. Once the repair process is complete, click "Finish" to close the window.

