



The new Razer Mamba returns with an ultra-precise 4G Dual Sensor System, that makes use of both a laser and an optical sensor to enhance tracking precision by calibrating to different surfaces and allowing adjustment of liftoff tracking distance. With an improved battery life for more untethered gaming enjoyment, a new multicolored LED for personalization, and outfitted with an industry-leading gaming grade wireless technology, the Razer Mamba is still in a league of its own.

TABLE OF CONTENTS

1. PACKAGE CONTENTS / SYSTEM REQUIREMENTS.....	3
2. REGISTRATION / TECHNICAL SUPPORT.....	3
3. TECHNICAL SPECIFICATIONS.....	5
4. DEVICE LAYOUT.....	6
5. SETTING UP YOUR RAZER MAMBA.....	8
6. INSTALLING YOUR RAZER MAMBA.....	13
7. CONFIGURING YOUR RAZER MAMBA.....	14
8. SAFETY AND MAINTENANCE.....	35
9. LEGALESE.....	38

1. PACKAGE CONTENTS / SYSTEM REQUIREMENTS

PACKAGE CONTENTS

- Razer Mamba
- Charging Dock
- Lithium-Ion Polymer Battery
- USB Cable
- Quick Start Guide
- Master Guide

SYSTEM REQUIREMENTS

- PC/Mac with USB port
- Windows® 8 / Windows® 7 / Windows Vista® / Windows XP (32-bit) / Mac OS X (10.7-10.9)
- Internet connection
- 100MB of free hard disk space

2. REGISTRATION / TECHNICAL SUPPORT

REGISTRATION

Sign up now for a Razer Synapse account to get real-time information on your product's warranty status. To learn more about Razer Synapse and all its features, visit www.razerzone.com/synapse.

If you are already a Razer Synapse user, register your product by clicking on your email address at the Razer Synapse application and select *Warranty Status* from the dropdown list.

To register your product online, visit www.razerzone.com/registration. Please note that you will not be able to view your warranty status if you register via the website.

TECHNICAL SUPPORT

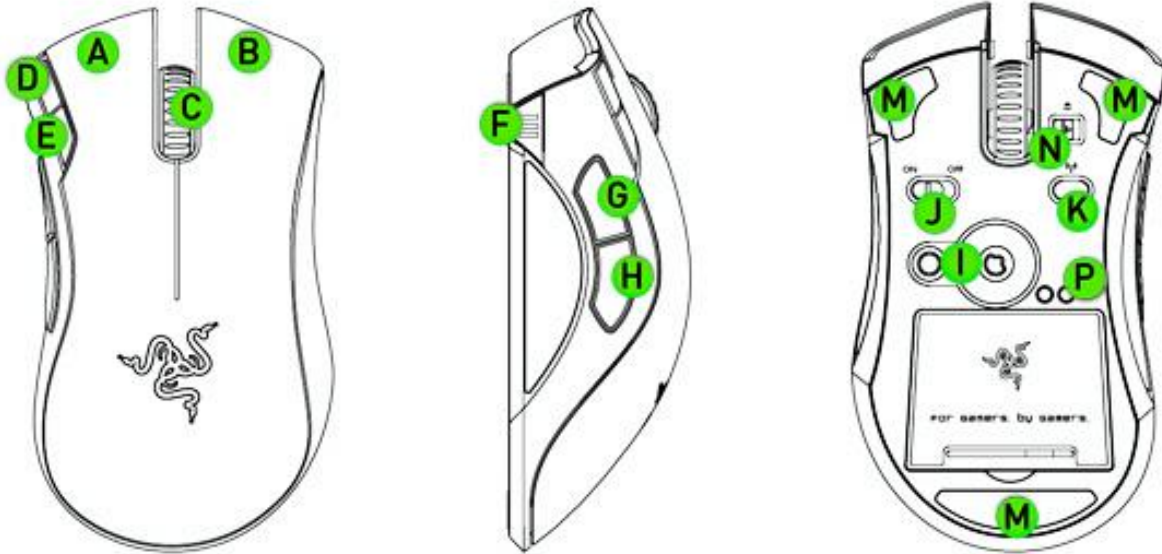
What you'll get:

- 2 years limited manufacturer's warranty.
- 6 months battery warranty
- Free online technical support at www.razersupport.com.

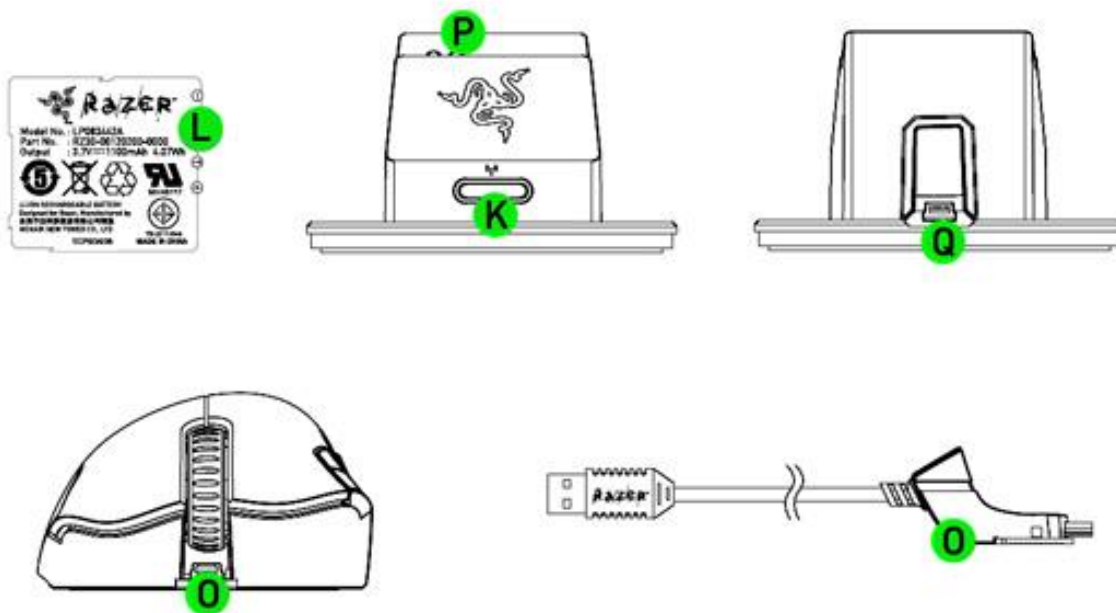
3. TECHNICAL SPECIFICATIONS

- Gaming Grade Wireless Technology
- 6400dpi 4G Dual Sensor System
- Dual mode wired / wireless functionality
- 1000Hz Ultrapolling
- Multi-Color Lighting
- Up to 200 inches per second / 50g acceleration
- Battery Life: Approx 16 hrs (continuous gaming)
- Approximate Size : 115 mm / 4.53" (Length) x 68 mm / 2.68" (Width) x 43 mm / 1.69" (Height)
- Approximate Weight: 136 g / 0.30 lbs

4. DEVICE LAYOUT



- A. Left Mouse Button
- B. Right Mouse Button
- C. Scroll Wheel
- D. Sensitivity Stage Up
- E. Sensitivity Stage Down
- F. Battery / Sensitivity Stage Indicator
- G. Mouse Button 5
- H. Mouse Button 4
- I. 4G Dual Sensor System
- J. Power On / Off Switch
- K. Pairing Button



- L. Rechargeable Battery
- M. Ultraslick Mouse Feet
- N. Cable Lock Switch
- O. Cable Connector Jack
- P. Battery Charging Connector
- Q. Connector Jack (Charging Dock)

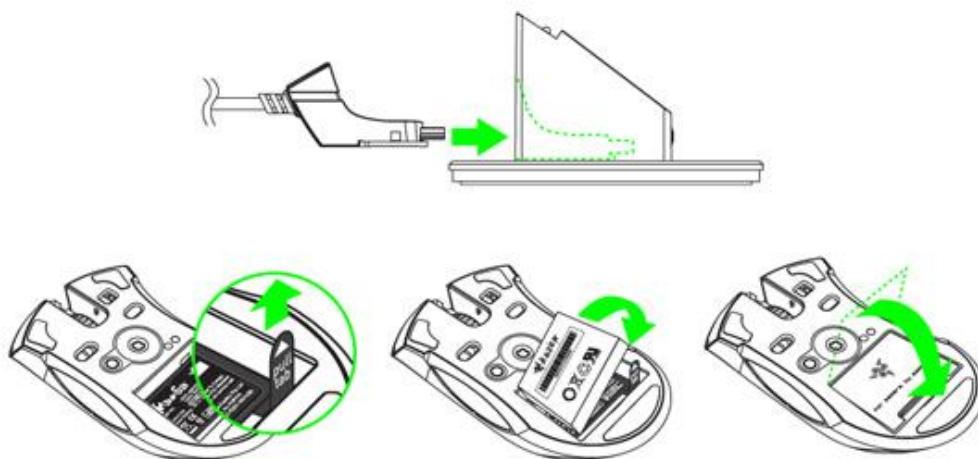
Note: For optimum battery life, always move the switch to the Off position when not using your Razer Mamba in wireless mode.

5. SETTING UP YOUR RAZER MAMBA

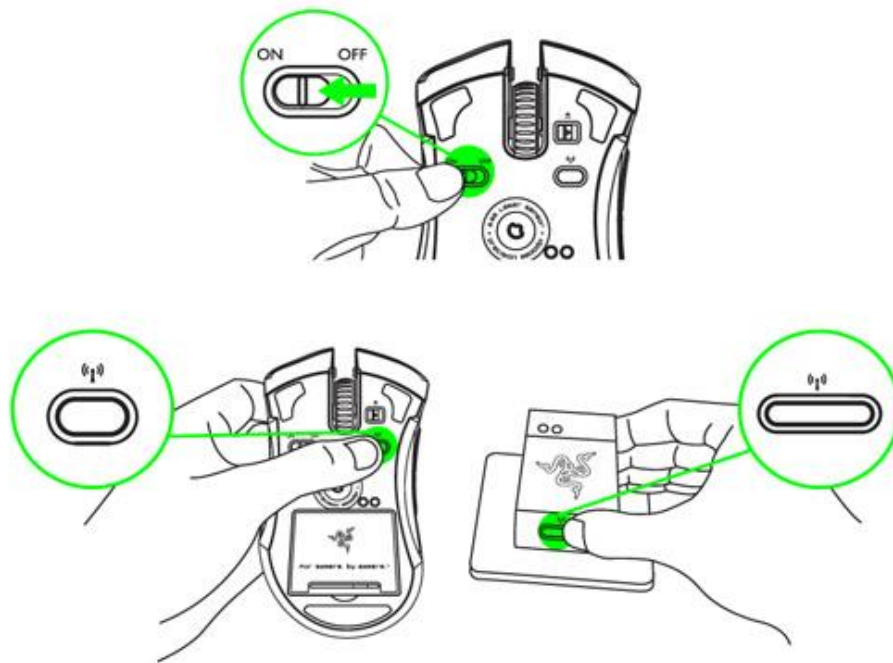
Note: For best results, please charge the battery fully the first time you use the Razer Mamba. Do check that the left-side switch on the bottom of the Razer Mamba is switched to the Off position. A depleted battery will fully charge in about 5 hours.

WIRELESS MODE

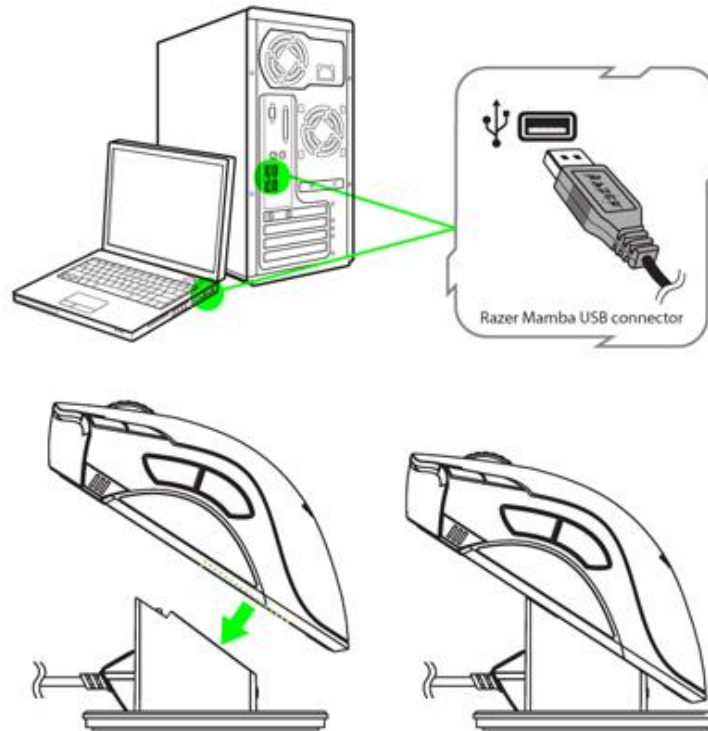
1. Connect the Cable Connector Jack to the Charging Dock.
2. Pull back the pull-tab and insert the battery into the battery compartment. (The pull-tab will allow you to remove the battery easily).
3. Close the battery compartment.



4. Slide the shown switch to the On position. To conserve battery power, always move the switch to the Off position when not using your mouse in wireless mode.
5. Press the pairing buttons on the Razer Mamba and Charging Dock. The pairing button on the Charging Dock will start blinking to indicate the pairing process.
6. When the pairing process is completed, the button will stop blinking. Your Razer Mamba is then ready for use in wireless mode.

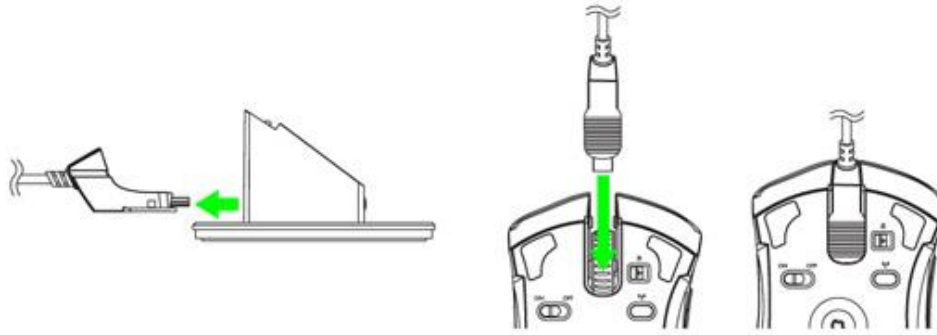


7. To charge the Razer Mamba in wireless mode, ensure that the shown switch is set to Off position and place it on the Charging Dock.

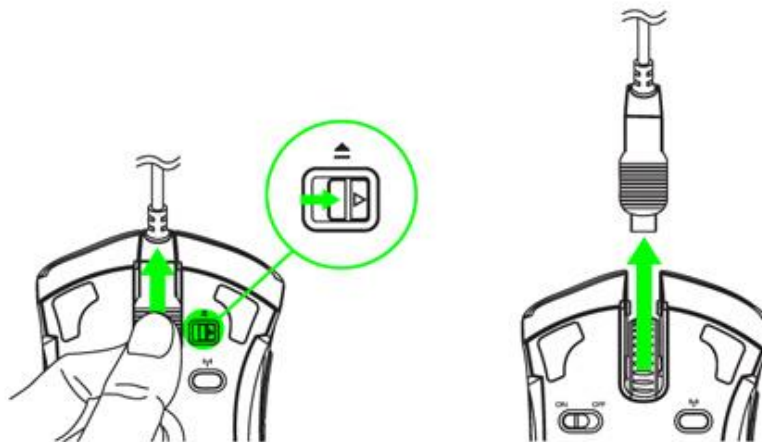


WIRED MODE

1. Do ensure that the shown switch is set to the Off position.
2. Connect the Cable Connector Jack to the Razer Mamba.




3. Plug mouse into the USB port of your computer. The battery will start charging automatically.
4. To remove the cable, slide the Cable Lock Switch to the right before pulling out the Cable Connector Jack.





BATTERY LIFE/SENSITIVITY STAGE INDICATOR BEHAVIOR

The Razer Mamba has a Battery Life/Sensitivity LED Indicator on its left side, which displays the status of battery life/sensitivity stage.

Battery Life Indicator Behavior

100% Battery – 3 green lit LEDs 

70% Battery – 2 green lit LEDs 


30% Battery – 1 green lit LED 


5% Battery – 1 green blinking LED 


Sensitivity Stage Indicator Behavior

Sensitivity Stage 1 – 2 green and 1 red lit LEDs 

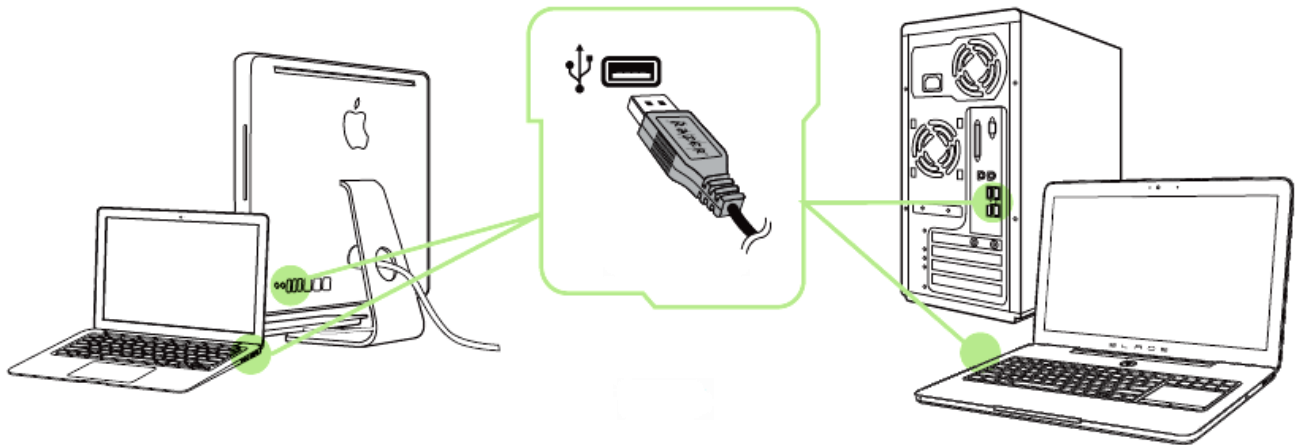
Sensitivity Stage 2 – 1 green and 2 red lit LEDs 

Sensitivity Stage 3 – 3 red lit LEDs 

Sensitivity Stage 4 – 2 red and 1 green lit LEDs 

Sensitivity Stage 5 – 1 red and 2 green lit LEDs 

6. INSTALLING YOUR RAZER MAMBA



Step 1: Connect your Razer device to the USB port of your computer.

Step 2: Install Razer Synapse when prompted* or download the installer from www.razerzone.com/synapse.

Step 3: Register for a RazerID or login to Synapse with an existing account.

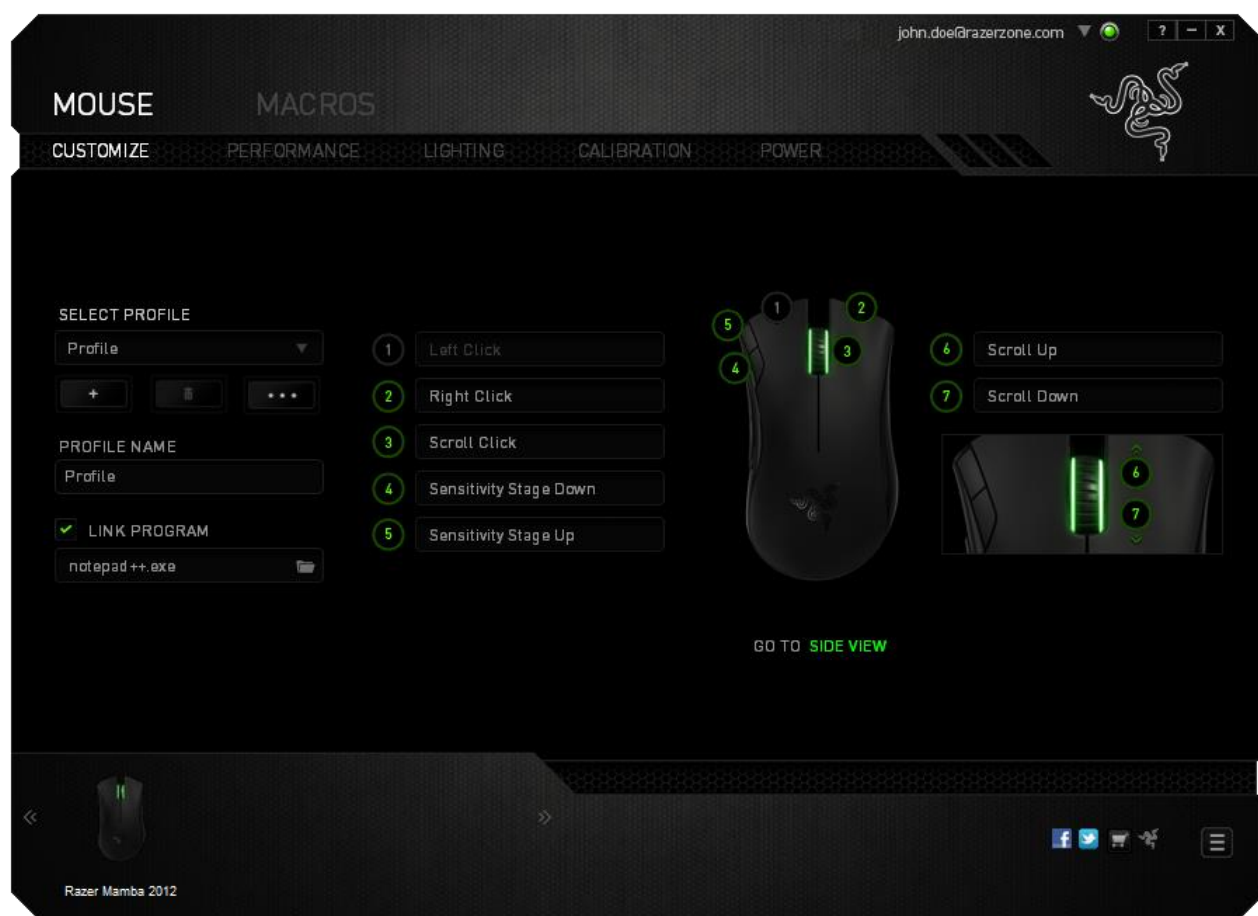
*Applicable for Windows 8 or later.

7. CONFIGURING YOUR RAZER MAMBA

Disclaimer: The features listed here require you to log in to Razer Synapse. These features are also subject to change based on the current software version and your Operating System.

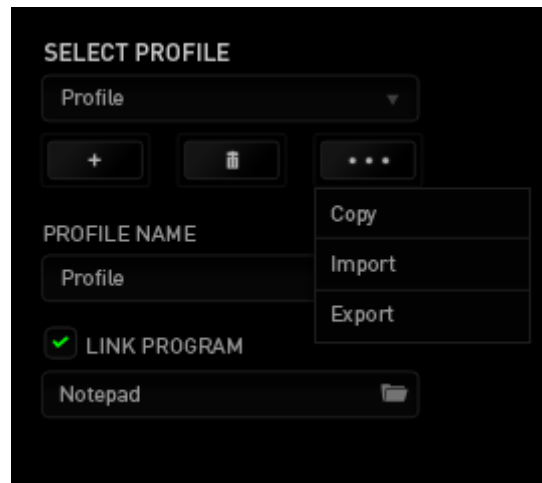
MOUSE TAB




The Mouse Tab is your default tab when you first install Razer Synapse. This tab allows you to customize your device's profiles, button assignments, performance and lighting.



PROFILE

A Profile is a convenient way of organizing all your custom settings and you can have an infinite number of profiles at your disposal. Any changes made within each tab are automatically saved to the current profile and stored into the cloud servers.



You can create a new profile by clicking the  button or delete the current profile by clicking the  button. The  button allows you to Copy, Import, and Export profiles.

Your current profile by default is named “*Profile*” however; you can rename it by typing on the text field below *PROFILE NAME*.

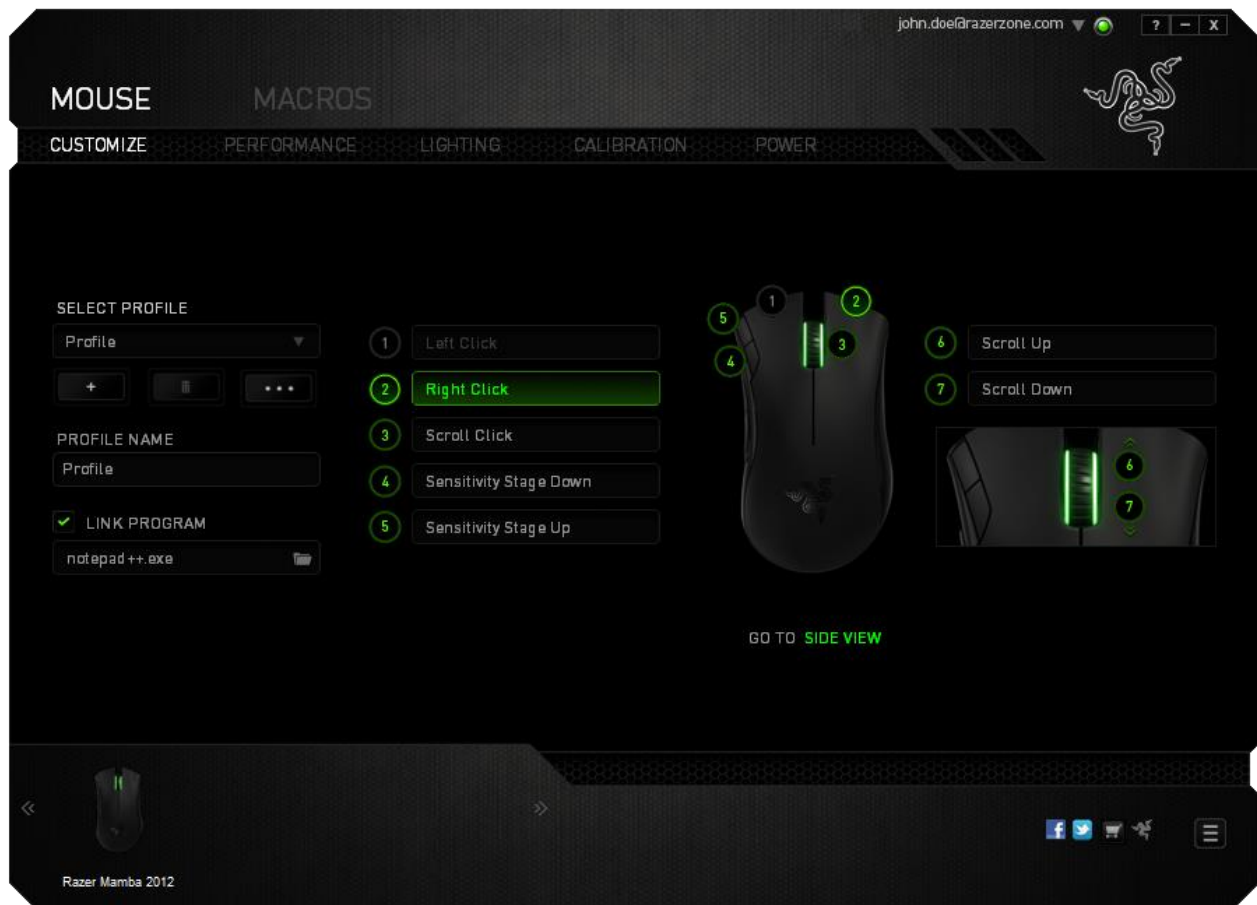
Each profile can be set to automatically activate when you run a program or application through the use of the *LINK PROGRAM* option.

CUSTOMIZE TAB

The Customize Tab is where you can modify the basic functionalities of your device such as button assignments to suit your gaming needs. The changes made in this tab are automatically saved to your current profile.

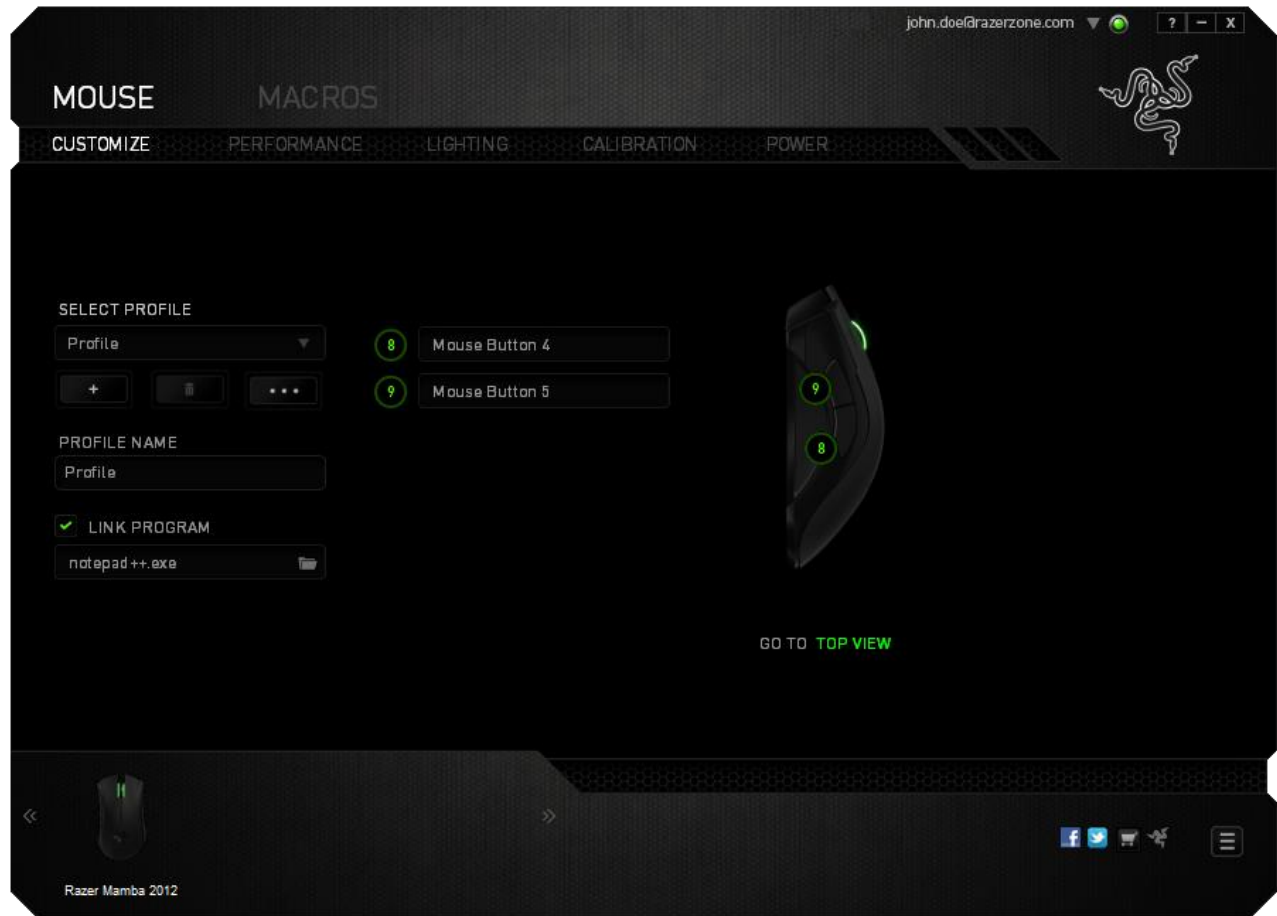
Top View

The Top View is where you can customize the 5 basic mouse buttons and the mouse wheel.



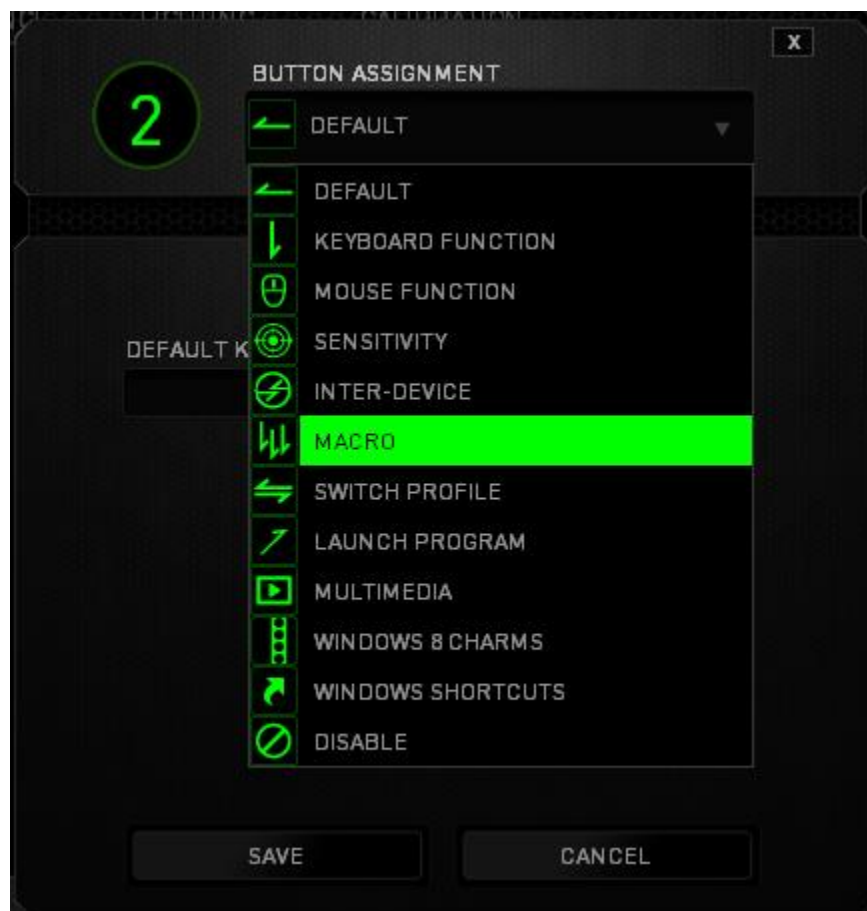
Side View

The side view allows you to customize the side buttons of your mouse.



BUTTON ASSIGNMENT MENU

Initially, each of the mouse buttons is set to *DEFAULT*. However, you may change the function of these buttons by clicking the desired button to access the **BUTTON ASSIGNMENT** Menu.



Listed below are the customization options and their descriptions.



Default

This option enables you to return the key to its original function. To choose the *DEFAULT*, simply select it from the **BUTTON ASSIGNMENT** Menu.



Keyboard Function

This option enables you to change the mouse buttons into keyboard functions. To choose a keyboard function, select *KEYBOARD FUNCTION* from the **BUTTON ASSIGNMENT** Menu and enter the Key you wish to use on the given field below. You may also include modifier keys such as *Ctrl*, *Shift*, *Alt* or any of these combinations.



Mouse Function

This option allows you to change the mouse buttons into other mouse functions. To choose a mouse function, select *MOUSE FUNCTION* from the **BUTTON ASSIGNMENT** Menu and an *ASSIGN BUTTON* submenu will appear.

Listed below are the functions which you can choose from the Assign Button submenu:

Left Click	- Performs a left mouse click using the assigned button.
Right Click	- Performs a right mouse click using the assigned button.
Scroll Click	- Activates the universal scrolling function.
Double Click	- Performs a double left click using the assigned button.
Mouse Button 4	- Performs a “Backward” command for most internet browsers.
Mouse Button 5	- Performs a “Forward” command for most internet browsers.
Scroll Up	- Performs a “Scroll Up” command using the assigned button.
Scroll Down	- Performs a “Scroll Down” command using the assigned button.
Scroll Left	- Performs a “Scroll Left” command using the assigned button.
Scroll Right	- Performs a “Scroll Right” command using the assigned button.



Sensitivity

Sensitivity refers to how fast the mouse pointer can travel across the screen. When you select the Sensitivity function from the BUTTON ASSIGNMENT Menu, a sub-menu will appear which gives you access to the following options:

- | | |
|-------------------------------|---|
| Sensitivity Clutch | - Change to a predefined sensitivity as long as the designated button is pressed. Releasing the button will return it to the previous sensitivity. |
| Sensitivity Stage Up | - Increase the current sensitivity by one stage. See the PERFORMANCE TAB to learn more about sensitivity stages. |
| Sensitivity Stage Down | - Decrease the current sensitivity by one stage. See the PERFORMANCE TAB to learn more about sensitivity stages. |
| On-The-Fly Sensitivity | - Readily adjust the current sensitivity using the assigned button. If On-The-Fly Sensitivity has been set, pressing the designated button and moving the scroll wheel will produce a bar on your screen which would indicate your current sensitivity level. |
| Cycle Up Sensitivity Stages | - Increase the current sensitivity stage by one and once it reaches the highest sensitivity stage, it will return to stage 1 when the button is pressed again. See the PERFORMANCE TAB to learn more about sensitivity stages. |
| Cycle Down Sensitivity Stages | - Decrease the current sensitivity stage by one and once it reaches stage 1, it will return to the highest sensitivity stage when the button is pressed again. See the PERFORMANCE TAB to learn more about sensitivity stages. |



Inter-device

Inter-device allows you to change the functionality of other Razer Synapse-enabled devices. Some of these functionalities are device-specific such as using your Razer gaming keyboard to change the Sensitivity Stage of your Razer gaming mouse. When you select Inter-device from the Button Assignment Menu, a sub-menu will appear.

DEVICE TO LINK allows you to choose which currently connected Razer device can be linked while FUNCTION allows you to choose which functionality you want to use for the linked device.



Macro

A Macro is a prerecorded sequence of keystrokes and button presses that is executed with precise timing. By assigning a Macro to a button, you can execute complex combinations with ease. The *ASSIGN MACRO* allows you to choose which recorded Macro to use while the *PLAYBACK OPTION* enables you to choose the behavior of the Macro. See the **MACROS TAB** to learn more about creating Macro commands.




Switch Profile

The Switch Profile enables you to change profiles on the fly and immediately load all your pre-configured settings. When you select Switch Profile from the BUTTON ASSIGNMENT Menu, a sub-menu will appear that will allow you to choose which profile to use. An on-screen display will automatically appear whenever you switch profiles.



Launch Program

The Launch Program allows you to run a program using the assigned button. When you select Launch Program from the BUTTON ASSIGNMENT Menu, a  button will appear which allows you to search for the specific program you want to use.



Multimedia Function

This option allows you to bind multimedia playback controls to your device. After selecting Multimedia Function, a submenu will appear. Listed below are the multimedia playback controls you can choose from the submenu:

Volume Down	- Decreases the audio output.
Volume Up	- Increases the audio output.
Mute Volume	- Mutes the audio.
Mic Volume Up	- Increases the microphone volume.
Mic Volume Down	- Decreases the microphone volume.
Mute Mic	- Mutes the microphone.
Mute All	- Mute both microphone and audio output.
Play / Pause	- Play, pause, or resume playback of the current media.
Previous Track	- Play the previous track.
Next Track	- Play the next track.



Windows 8 Charms

This option enables you to assign the key into an Operating System shortcut command. For more information please visit: <http://windows.microsoft.com/en-sg/windows-8/getting-around-tutorial>.



Windows Shortcut

This option enables you to assign the key into an Operating System shortcut command. For more information please visit: <http://support.microsoft.com/kb/126449>.



Disable

This option renders the assigned button unusable. Use Disable when you have no need for a button or if a particular button interferes with your gaming.

PERFORMANCE TAB

The Performance Tab allows you to enhance the speed and precision of your mouse pointer. Similar to the Customize Tab, the changes made here are automatically saved to your current profile.



Listed below are the performance options and their descriptions.

Sensitivity

Sensitivity pertains to how much effort is needed to move the mouse pointer in any direction. The higher the sensitivity, the more responsive the mouse will be. (Recommended setting: 1600 – 1800)

Enable X-Y Sensitivity

By default, the X-axis (horizontal) and Y-axis (vertical) use the same sensitivity values. However, you may set different sensitivity values to each of the axes by selecting the *ENABLE X-Y SENSITIVITY* option.

Configure Sensitivity Stages

A sensitivity stage is a preset sensitivity value. You can create up to 5 different sensitivity stages which you can cycle through using the sensitivity stage up/down buttons. You may use the *ENABLE X-Y SENSITIVITY* concurrently with this option. Note that whenever you configure a sensitivity stage, your current sensitivity will match that setting.

Acceleration

Acceleration increases the cursor's movement speed depending on how quickly you move the mouse. The higher the value, the faster the mouse accelerates. (Recommended settings: Windows 0, Mac 5)

Polling Rate

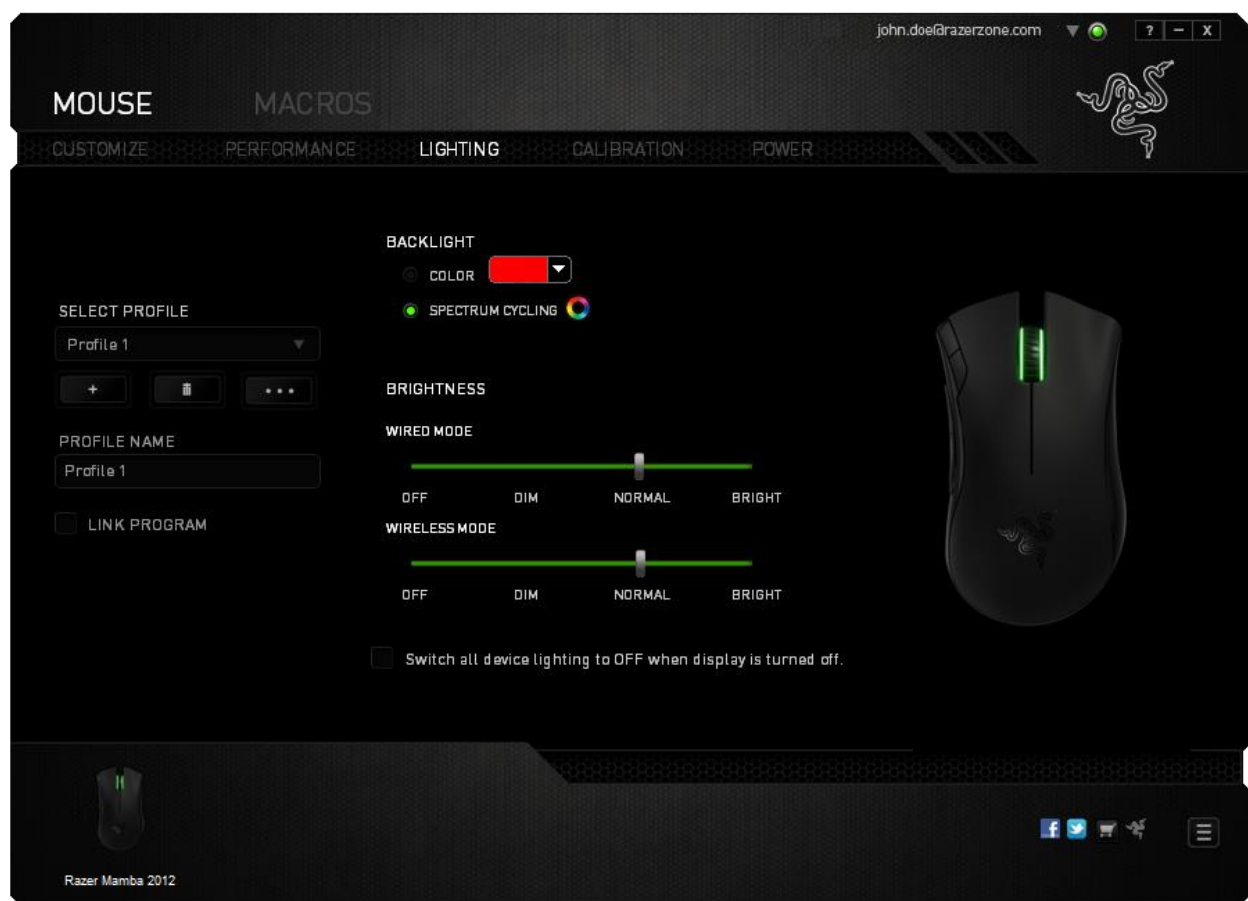
The higher the polling rate, the more often the computer receives information about the status of your mouse, thus increasing the mouse pointer's reaction time. You can switch between 125Hz (8ms), 500Hz (2ms) and 1000Hz (1ms) by selecting your desired polling rate on the dropdown menu. (Recommended setting: 500Hz – 1000Hz)

LIGHTING TAB

The Lighting Tab allows you to configure the LEDs of your Razer Mamba. You can customize the look of the Razer Mamba by choosing from over 16 million colors. Select the Spectrum Cycling option to allow the colors to change indefinitely. You can adjust the light brightness to your liking.

Similar to the previous tabs, the changes made here are also automatically saved to your current profile.

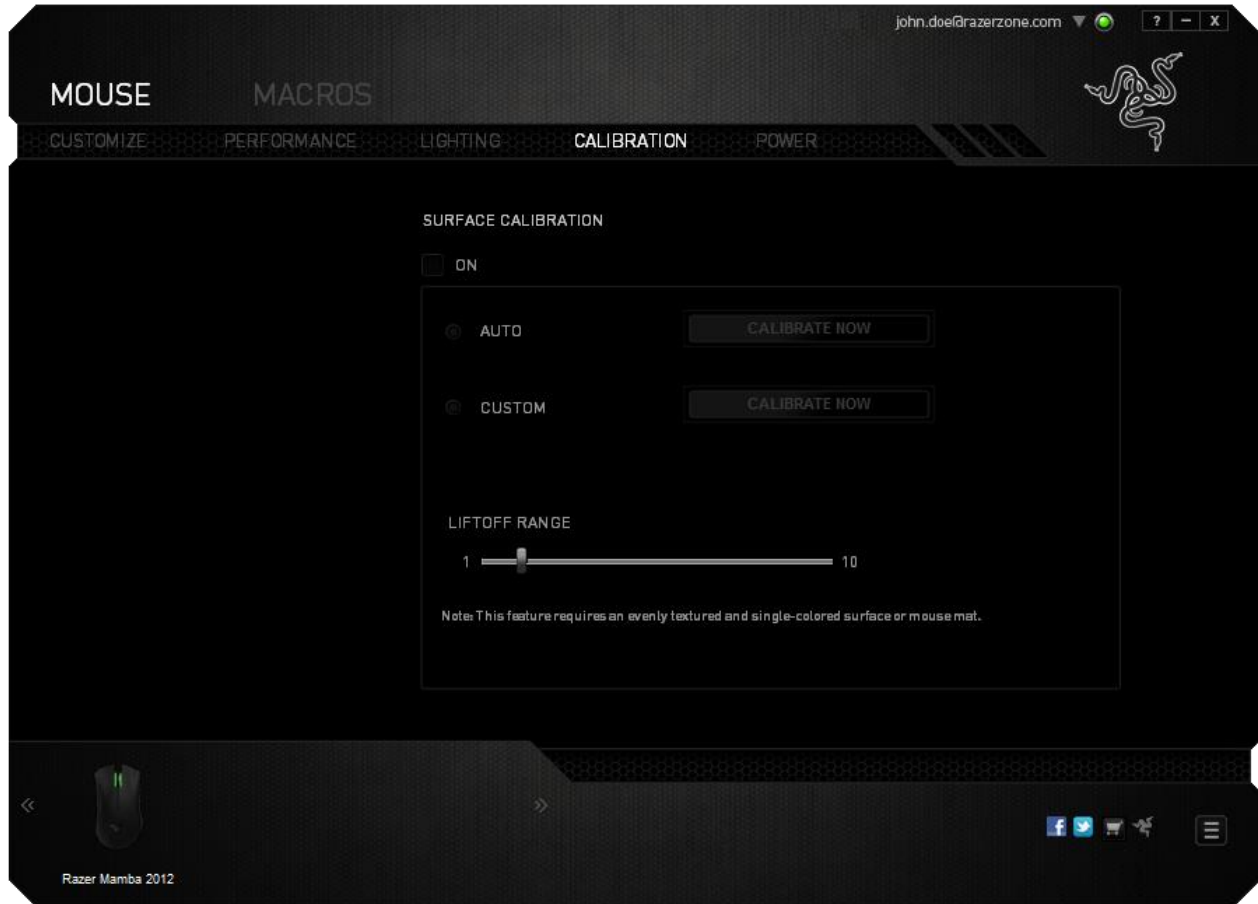
Note: Please do not move your mouse for about 2 seconds while changes are being applied.



CALIBRATION TAB

The Calibration Tab allows you to optimize your Razer Precision Sensor to any mousing surface for better tracking. To use this feature, you must select the ON option under **SURFACE CALIBRATION**.

Note: This feature requires an evenly textured and single-colored surface or mouse mat.

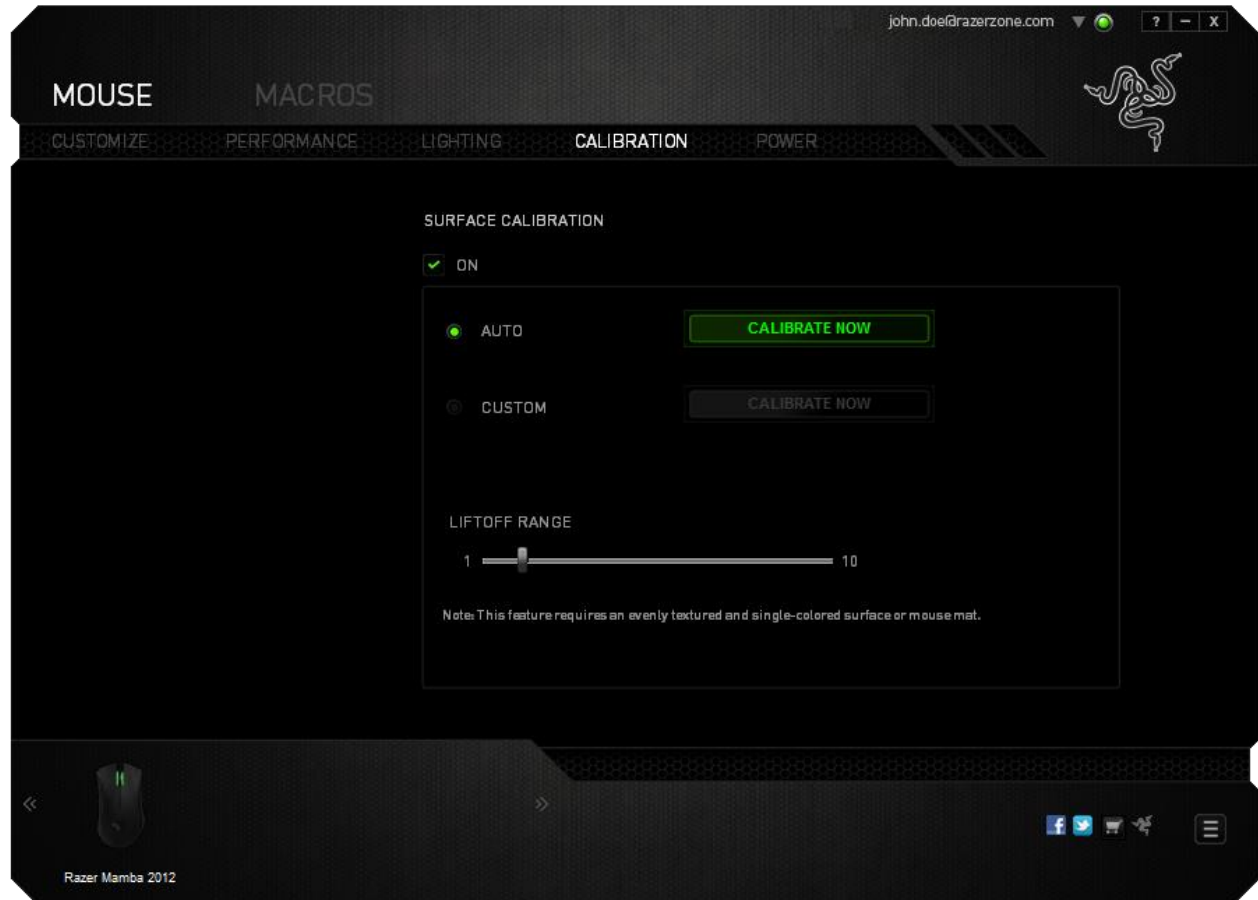


The LIFTOFF RANGE allows you to set the distance in which the sensor stops tracking as it is being lifted away from its mousing surface.

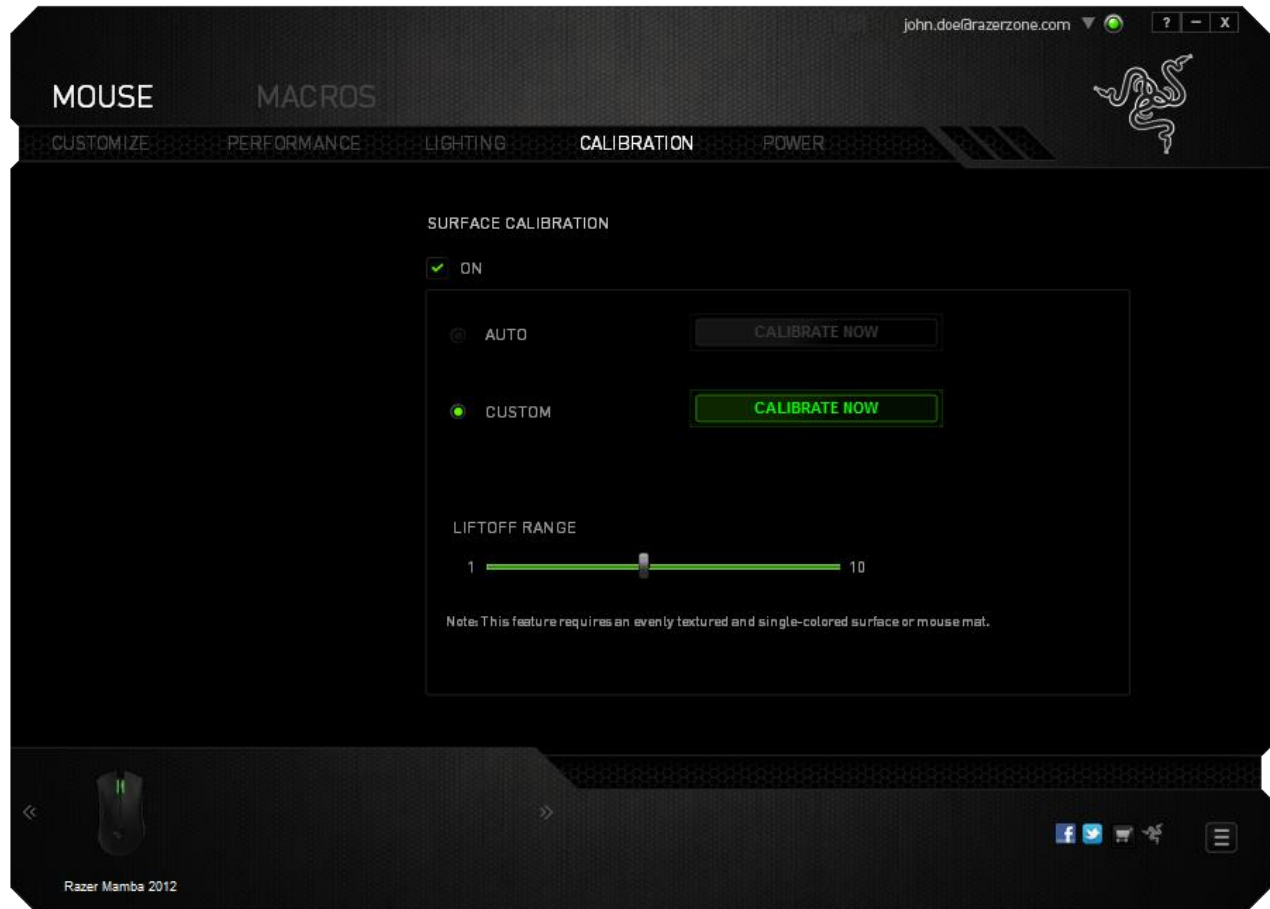
Note: Please do not move your mouse for about 2 seconds while changes are being applied.

To begin calibrating the sensor, click the **CALIBRATE NOW** button.

- Auto - The mouse will automatically calibrate to your surface whenever the mouse is plugged into your system.

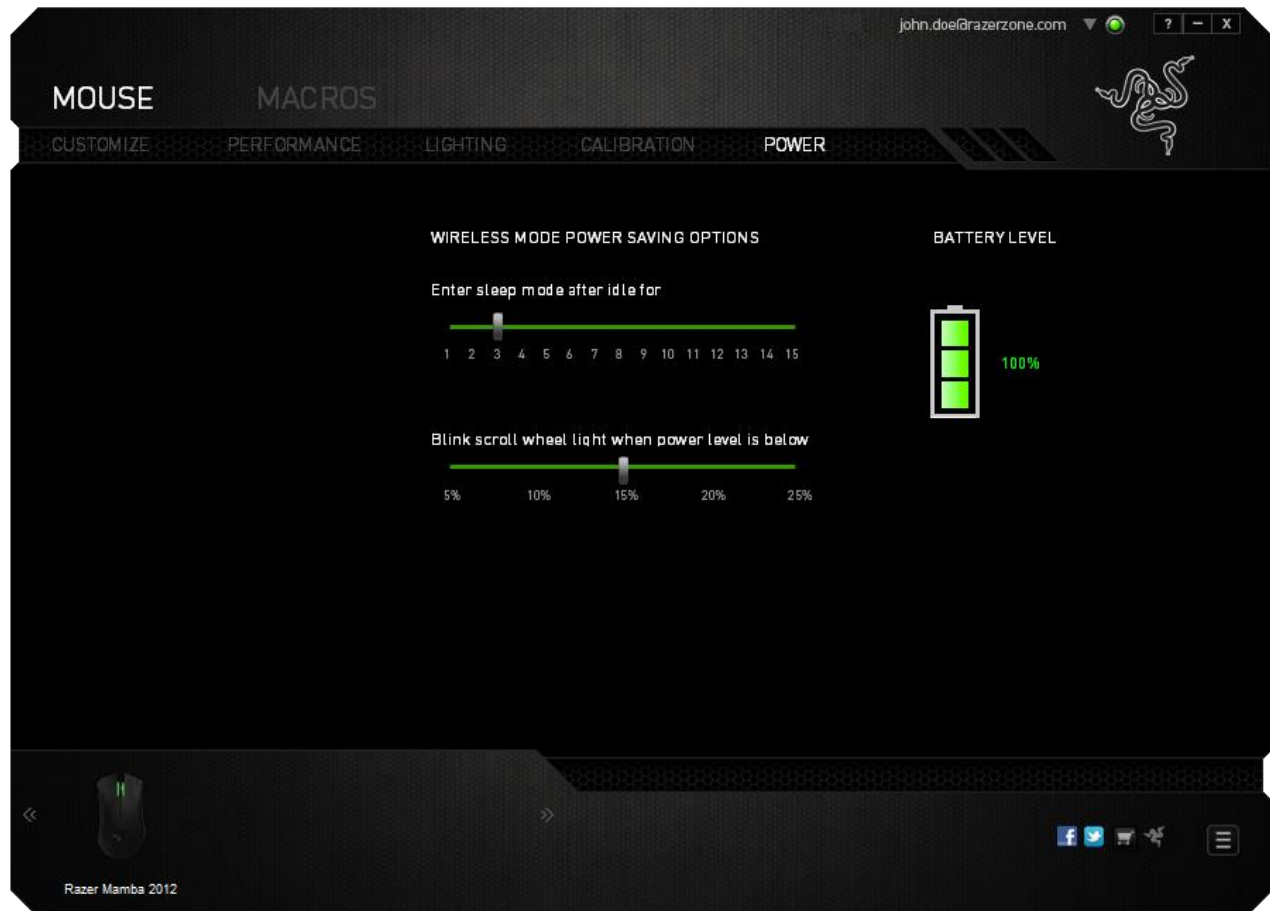


- Custom - Increase or decrease the height where tracking is cut off as soon as the mouse is lifted from the surface.



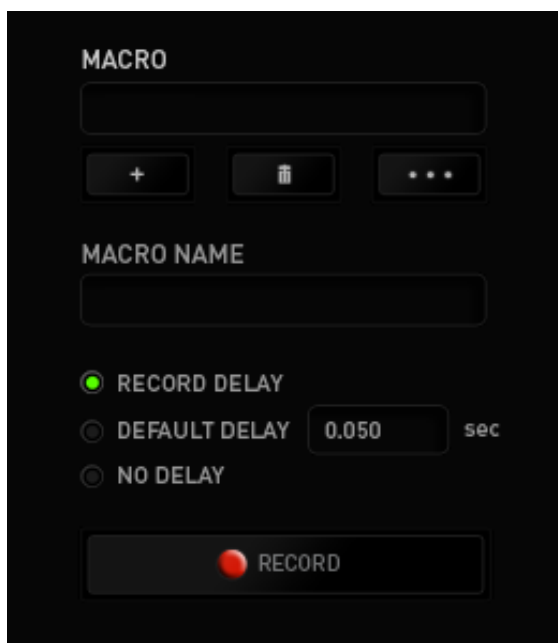
POWER TAB




The Power Tab allows you to manage your device's energy consumption when running on batteries. You can also set your device to enter sleep mode when it has been idle for a certain amount of time. The Power Tab also allows you to be notified when the device's power is at a certain level.

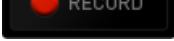



MACROS TAB

The Macros Tab allows you to create a series of precise keystrokes and button presses. This tab also allows you to have numerous macros and extremely long macro commands at your disposal.



The Macro section works similarly to Profile wherein you can rename a macro by typing on the field below *MACRO NAME*. There are also other options available in the macro section such as creating a new macro by clicking the  button and deleting the current macro by clicking the  button. The  button allows you to Copy, Import, and Export macros.

To create a macro command, simply click the  button and all your keystrokes and button presses will automatically register on the macro screen. When you are done recording your macro commands, click on the  button to end the session.





The Macro section allows you to input the delay in-between commands. In *RECORD DELAY* the delay in-between commands are registered as how it is entered. The *DEFAULT DELAY* uses a predefined time (expressed in seconds) as the delay. And *NO DELAY* omits all the pauses in-between keystrokes and button presses.




Note: You may use up to three decimal places when inserting values on the seconds (sec) field.

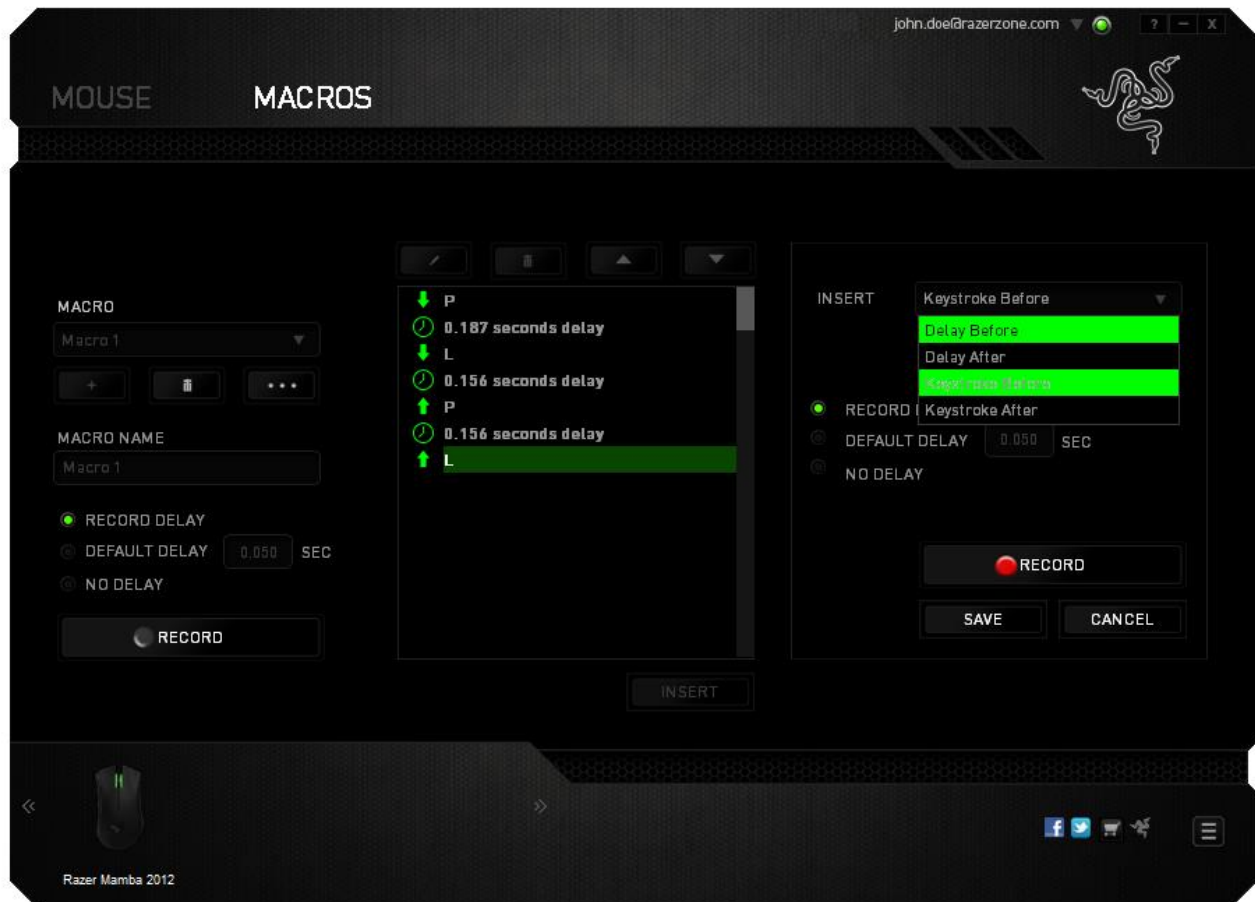
Once you have recorded a macro, you may edit the commands you have entered by selecting each command on the macro screen. Each keystroke or button press is arranged sequentially with the first command shown at the top of the screen.

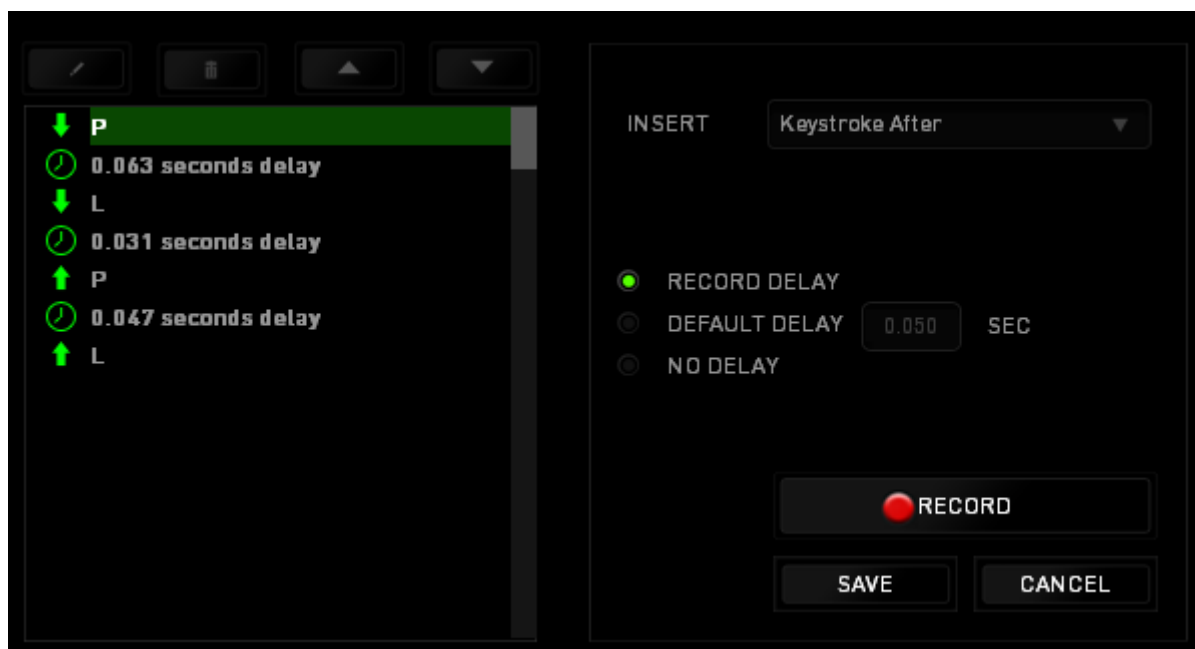



The  button allows you to edit a particular command and the  button enables you to delete a command. The  and  buttons gives you the option to move the command up or down.

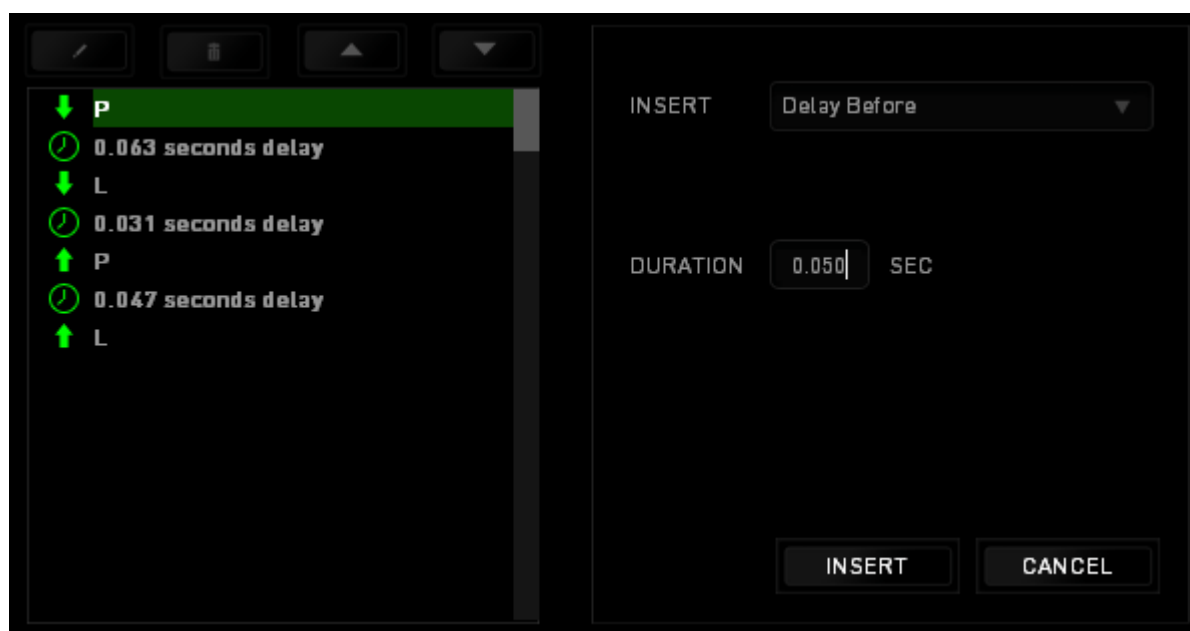
The  button allows you to put in additional keystrokes, button presses or time delays either before or after the selected command.

Once you have pressed the **INSERT** button, a new display window will appear beside the list of macro commands. The dropdown menu on this window allows you to choose a keystroke or a delay to be added in before or after the highlighted macro command.





You may add in a new set of macro commands by clicking the  button on the keystroke menu; or input time delays on the duration field using the delay menu.



8. SAFETY AND MAINTENANCE

SAFETY GUIDELINES

In order to achieve maximum safety while using your Razer Mamba, we suggest that you adopt the following guidelines:

1. Avoid looking directly at the tracking beam of your mouse or pointing the beam in anyone else's eye. Note that the laser beam is NOT visible to the naked human eye and is set on an Always-On mode.
2. Should you have trouble operating the device properly and troubleshooting does not work, unplug the device and contact the Razer hotline or go to www.razersupport.com for support. Do not attempt to service or fix the device yourself at any time.
3. Do not take apart the device (doing so will void your warranty) and do not attempt to operate it under abnormal current loads.
4. Keep your device away from liquid, humidity or moisture. Operate your device only within the specified temperature range of 0°C (32°F) to 40°C (104°F). Should the temperature exceed this range, unplug and switch off the device in order to let the temperature stabilize to an optimal level.

COMFORT

Research has shown that long periods of repetitive motion, improper positioning of your computer peripherals, incorrect body position, and poor habits may be associated with physical discomfort and injury to nerves, tendons and muscles. Below are some guidelines to avoid injury and ensure optimum comfort while using your Razer Mamba.

1. Position your keyboard and monitor directly in front of you with your mouse next to it. Place your elbows next to your side, not too far away and your mouse within easy reach.
2. Adjust the height of your chair and table so that the keyboard and mouse are at or below elbow height.
3. Keep your feet well supported, posture straight and your shoulders relaxed.
4. During gameplay, relax your wrist and keep it straight. If you do the same tasks with your hands repeatedly, try not to bend, extend or twist your hands for long periods.
5. Do not rest your wrists on hard surfaces for long periods. Use a wrist rest to support your wrist while gaming.
6. Customize the buttons on your mouse to suit your style of gaming in order to minimize repetitive or awkward motions while gaming.
7. Make sure that your mouse fits comfortably in your hands.
8. Do not sit in the same position all day. Get up, step away from your desk and do exercises to stretch your arms, shoulders, neck and legs.
9. If you should experience any physical discomfort while using your mouse, such as pain, numbness, or tingling in your hands, wrists, elbows, shoulders, neck or back, please consult a qualified medical doctor immediately.

MAINTENANCE AND USE

The Razer Mamba requires minimum maintenance to keep it in optimum condition. Once a month we recommend you unplug the device from the USB port and clean it using a soft cloth or cotton swab with a bit of warm water to prevent dirt buildup. Do not use soap or harsh cleaning agents.

To get the ultimate experience in movement and control, we highly recommend a premium mousing surface from Razer. Some surfaces will cause undue wear on the feet requiring constant care and eventual replacement.

Do note that the sensor of the Razer Mamba is “tuned” or optimized especially for the Razer mousing surfaces. This means that the sensor has been tested extensively to confirm that the Razer Mamba reads and tracks best on Razer mousing surfaces. Other premium mousing surfaces from companies like Everglide may work just as well.

9. LEGALESE

COPYRIGHT AND INTELLECTUAL PROPERTY INFORMATION

©2011-2013 Razer Inc. Patent Pending. All Rights Reserved. Razer, the Razer Triple-Headed Snake logo, the Razer distressed word logo and other trademarks contained herein are trademarks or registered trademarks of Razer Inc. and/or its affiliated or associated companies, registered in the United States and/or other countries. Windows and the Windows logo are trademarks of the Microsoft group of companies. Mac OS, Mac and the Mac logo are trademarks or registered trademarks of Apple.

Razer Inc. ("Razer") may have copyright, trademarks, trade secrets, patents, patent applications, or other intellectual property rights (whether registered or unregistered) concerning the product in this Master Guide. Furnishing of this Master Guide does not give you a license to any such copyright, trademark, patent or other intellectual property right. The Razer Mamba (the "Product") may differ from pictures whether on packaging or otherwise. Razer assumes no responsibility for such differences or for any errors that may appear. Information contained herein is subject to change without notice.

LIMITED PRODUCT WARRANTY

For the latest and current terms of the Limited Product Warranty, please visit www.razerzone.com/warranty.

LIMITATION OF LIABILITY

Razer shall in no event be liable for any lost profits, loss of information or data, special, incidental, indirect, punitive or consequential or incidental damages, arising in any way out of distribution of, sale of, resale of, use of, or inability to use the Product. In no event shall Razer's liability exceed the retail purchase price of the Product.

COSTS OF PROCUREMENT

For the avoidance of doubt, in no event will Razer be liable for any costs of procurement unless it has been advised of the possibility of such damages, and in no case shall Razer be liable for any costs of procurement liability exceeding the retail purchase price of the Product.

GENERAL

These terms shall be governed by and construed under the laws of the jurisdiction in which the Product was purchased. If any term herein is held to be invalid or unenforceable, then such term (in so far as it is invalid or unenforceable) shall be given no effect and deemed to be excluded without invalidating any of the remaining terms. Razer reserves the right to amend any term at any time without notice.