

---

## DRIVER INSTALLATION INSTRUCTIONS

### APPLICABLE MODEL NUMBERS

- RZ09-03101

### DRIVER NAME AND VERSION

NVIDIA GTX 1650 MAX-Q DRIVER 26.21.14.3165

### INSTRUCTIONS

Note: This download is for the original driver that was installed on your Razer Laptop. Updates for this driver are available via standard Windows Updates. To ensure you have the latest driver installed on your Blade please make sure to apply all available updates from Windows.

Please follow the instructions below to download and install the original driver for your Blade. Following the installation, it is recommended to search for any available Windows Updates.

1. Ensure that your Blade is plugged into a wall outlet and not running on battery alone before proceeding.
2. Save any open documents on your computer and close all other programs before attempting this update.
3. Download the driver from the link below. You will need to right click the .zip folder and choose to extract the files to location of your choosing (such as your desktop) to locate the files for the installation process.

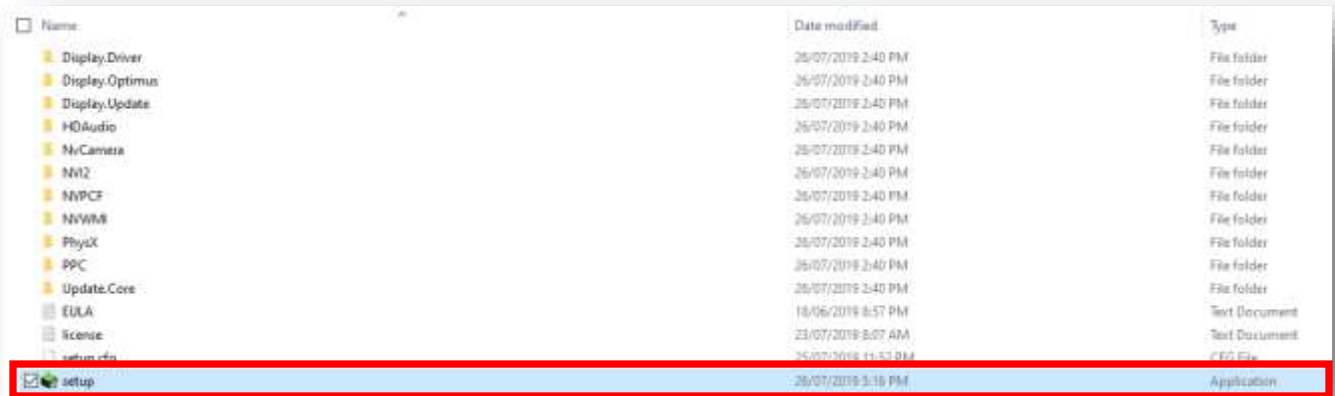
<http://rZR.to/37iKG>

4. Once you have extracted the file proceed to the installation steps below.

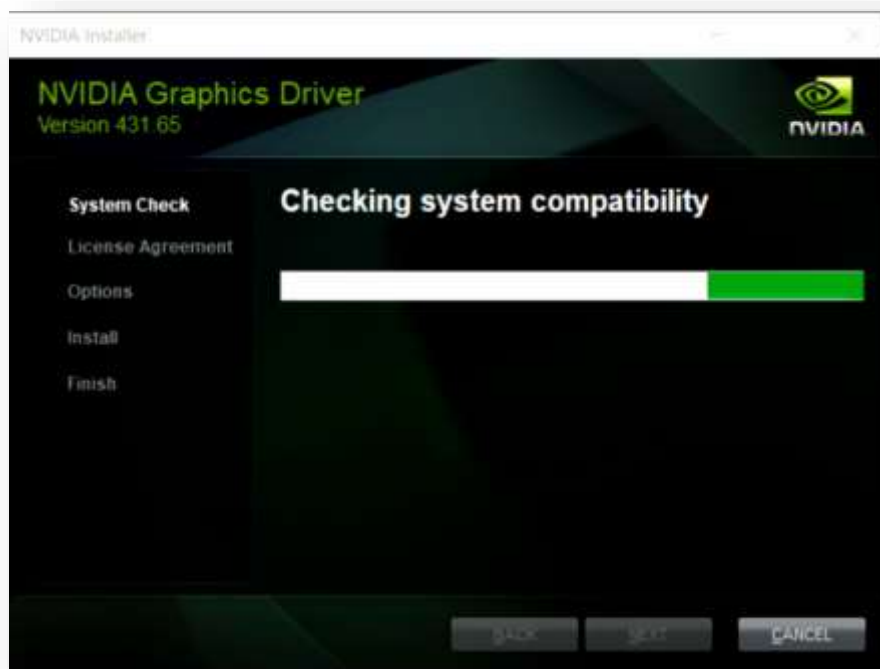
---

## INSTALLATION PROCESS

1. To initiate the initial process, double-click on the setup.exe (Application) as shown in the image below:



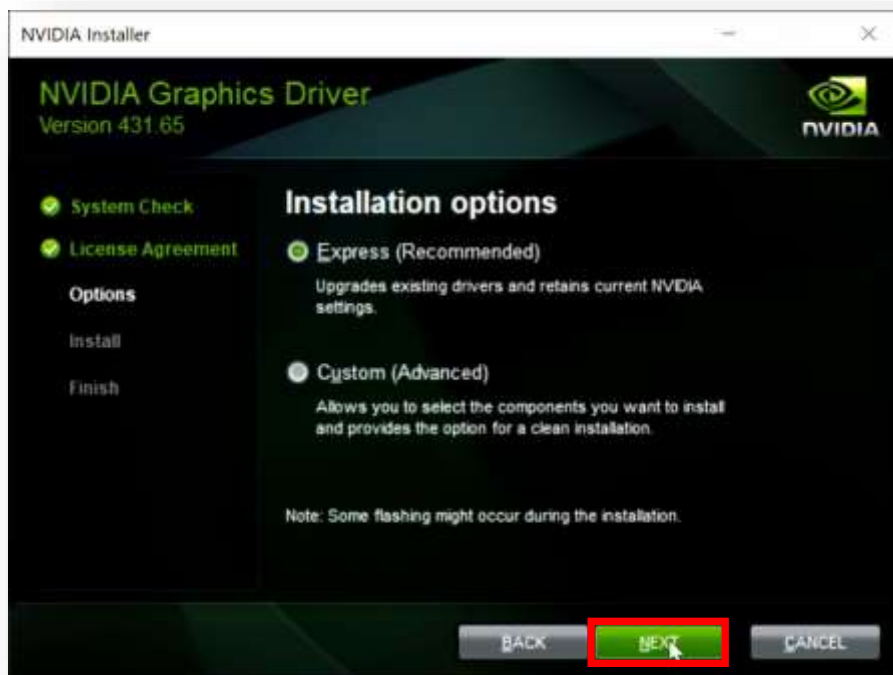
2. You will be prompted to confirm these changes through the User Account Control message that will appear on your screen. Click "Yes" to confirm. The NVIDIA Graphics Driver installer will appear and will automatically check system compatibility.



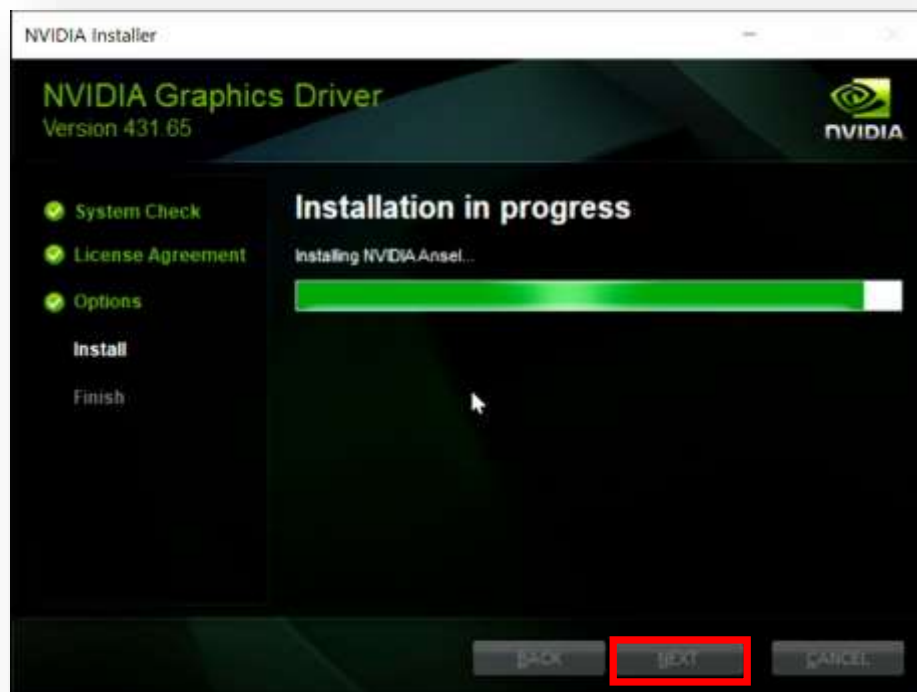
3. Once finished, the installer will proceed to License Agreement, Click "AGREE AND CONTINUE".



4. You will be given an option to do an Express or Custom installation. For most people, we recommend using the Express option. Click "NEXT" to continue.



5. Wait for the progress bar to finish. Once the installation is complete, the dialog box should automatically move on to the next window. If not, click "NEXT".



6. You have successfully installed the driver. Click "CLOSE" to finish installation.

