

---

## DRIVER INSTALLATION INSTRUCTIONS

### APPLICABLE MODEL NUMBERS

- RZ09-03100

### DRIVER NAME AND VERSION

Intel Wireless AX 201 (Bluetooth) 21.20.1.2

### INSTRUCTIONS

**Note:** This download is for the original driver that was installed on your Razer Laptop. Updates for this driver are available via standard Windows Updates. To ensure you have the latest driver installed on your Blade please make sure to apply all available updates from Windows.

Please follow the instructions below to download and install the original driver for your Blade. Following the installation, it is recommended to search for any available Windows Updates.

1. Ensure that your Blade is plugged into a wall outlet and not running on battery alone before proceeding.
2. Save any open documents on your computer and close all other programs before attempting this update.
3. Download the driver from the link below. You will need to right click the .zip folder and choose to extract the files to a location of your choice (such as your desktop).

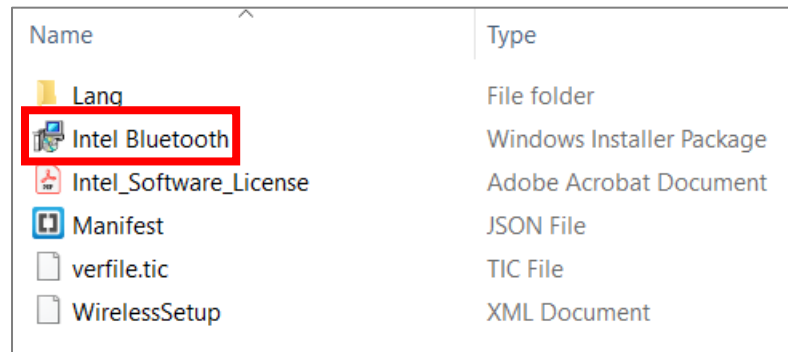
<http://rzt.to/WQNg1>

4. Once you have extracted the file proceed to the installation steps below.

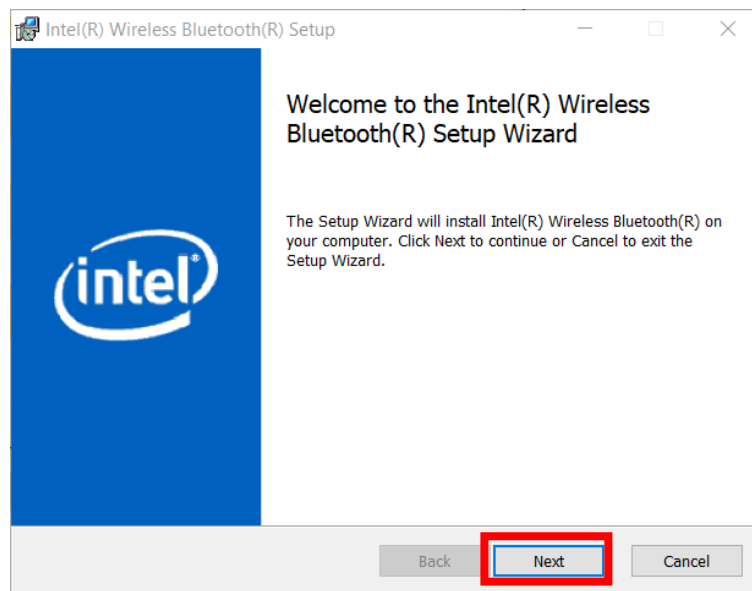
---

## INSTALLATION PROCESS

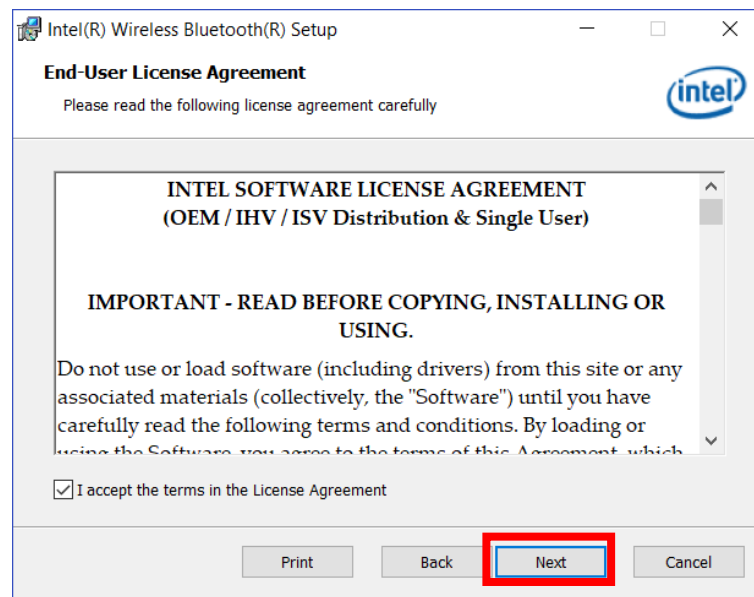
1. Run the Intel Bluetooth installer located in your chosen download location to begin the update process.



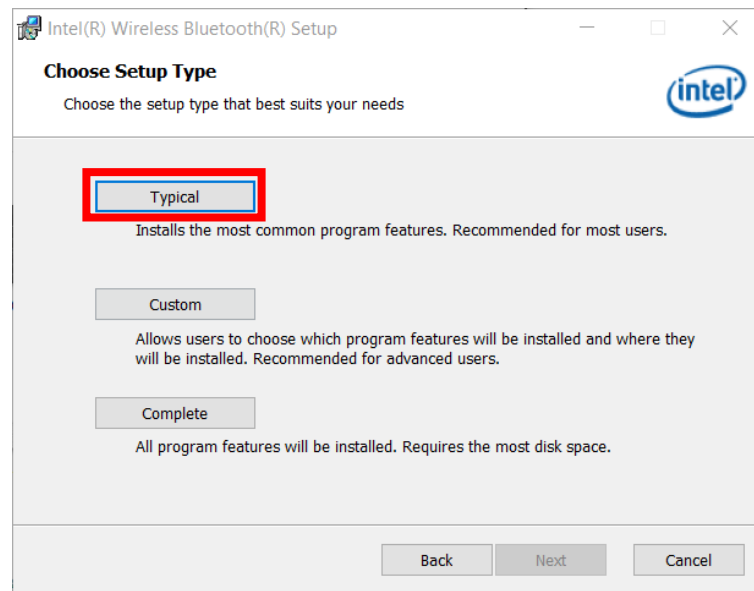
2. The User Account Control window may pop up to confirm changes that will be made by the application. Click "Yes" to allow the application to launch.
3. The Intel Wireless Bluetooth Setup Wizard will pop up. Click "Next" to continue.



4. Tick "I accept the terms in the License Agreement" and click "Next".



5. You will be asked to choose a setup type: Typical, Custom or Complete. In this example we are going to choose "Typical".



6. After clicking "Typical" you will be asked to confirm the setup. Once you confirm, a progress bar will appear. Wait for the installation process to complete.

7. Once the installation process is complete, click "Finish".

