



HOW TO SET UP YOUR RAZER SILA

---

## RAZER SILA SETUP

Before you start, make sure you have:

- A Mobile Phone with Android™ 5.0 Lollipop / iOS® 10 (or higher)
- A Cable / DSL Modem with an established and working internet connection
- The contents from the Razer Sila's package:



Follow the steps below to set up your Razer Sila.

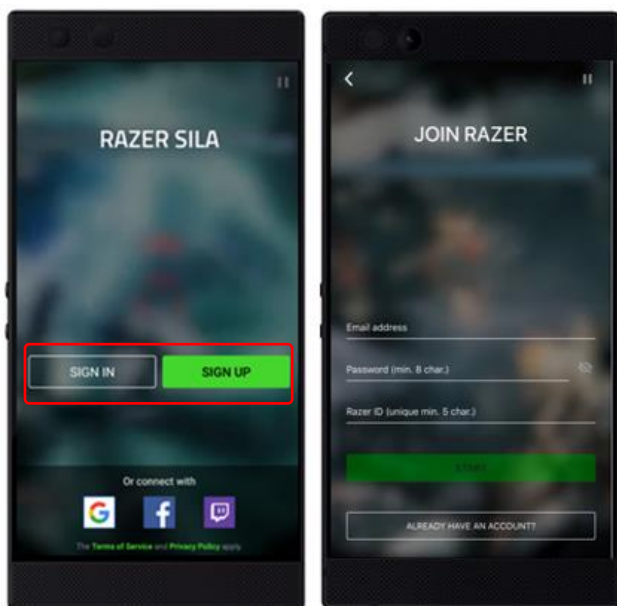
### 1 - DOWNLOADING THE RAZER SILA'S MOBILE APP

- Go to the Google Play Store or Apple App Store and search for the "Razer Sila App"
- Download and Install the "Razer Sila App"
- Once the installation finishes, launch the App



## 2 – CREATING OR LOGGING INTO A RAZER ID ACCOUNT

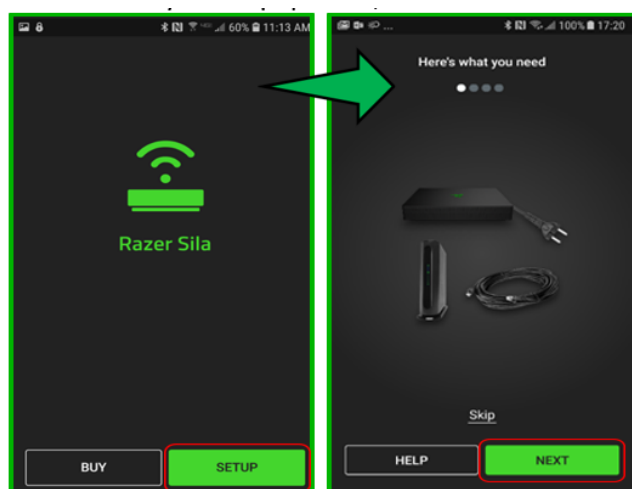
- Follow the step-by-step prompts to Sign Up for a Razer ID Account
- **Note:** If you already have a Razer ID Account, click on “SIGN IN” and enter the email address and password associated with your existing Razer ID Account



## 3 – RAZER SILA – HARDWARE SETUP

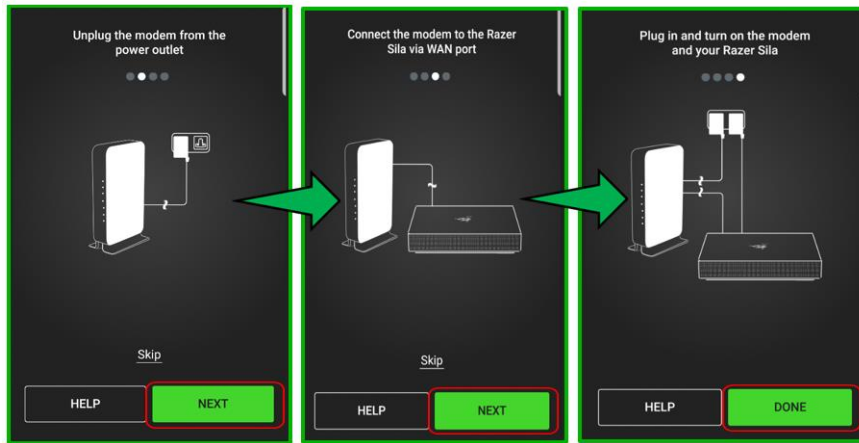
**Note:** Before proceeding, make sure that your modem has an active Internet connection

- Using the Razer Sila’s App, click on “SETUP”
- The App will show you what is needed, Click “NEXT”



Next, position the Razer Sila on a flat surface near your modem and follow the step-by-step instructions on the Razer Sila App.

- Unplug your modem from the power outlet.
- Using the included Internet cable, connect the WAN port of your Razer Sila to any of your modem's LAN ports
- Plug in and turn on both the modem and your Razer Sila to a power source, click "DONE"

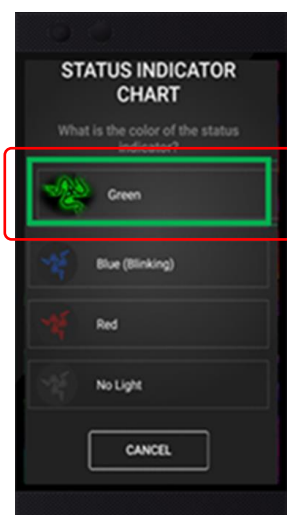


The hardware setup is complete, follow the instructions below to set up your Razer Sila's Network.

## 5 – PAIR AND CONFIGURE THE RAZER SILA NETWORK

**Important:** Once the hardware setup above is completed, please wait until the Razer Logo on the Razer Sila turns solid green. It may take 2 to 4 mins for the light to turn solid green.

- Click on the "Green" status indicator as soon as the Status Indicator on the Razer Sila turns solid green.

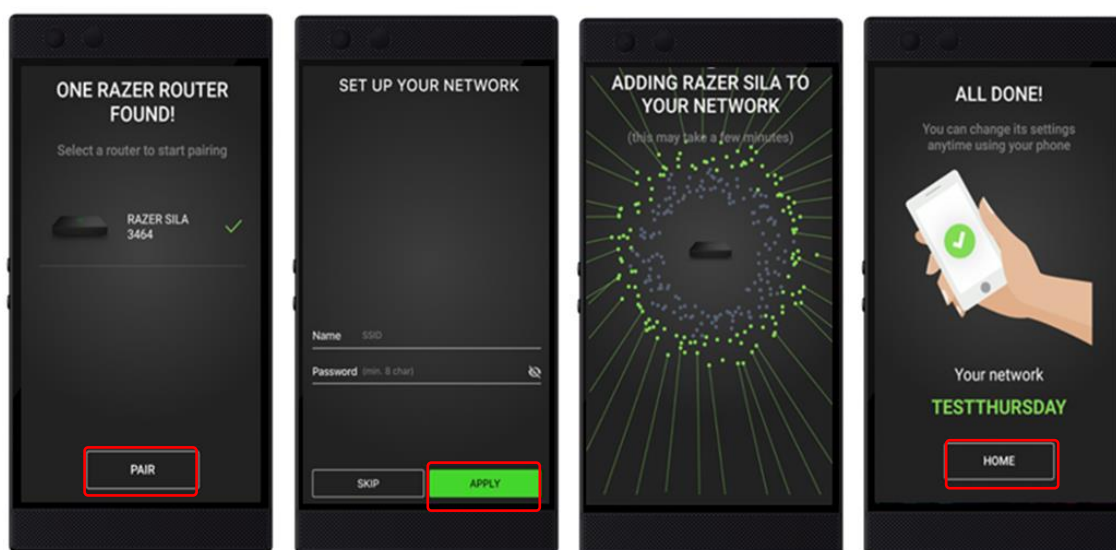


The App will now find your Razer Sila.

- Click on the Razer Sila Icon to select the router and hit "PAIR".
- Once paired and online, the Razer Sila App will prompt you to enter a desired SSID Name and Password for the network. Once finished click on "Apply" to add the Razer Sila to the Network. (This process may take a few minutes)
- Once the App has successfully been established an "All DONE" page will appear.

**IMPORTANT:** At this point, please go to the Wi-Fi settings of your mobile phone and connect your mobile device to the Razer Sila's SSID that you just created.

- Select the "HOME" icon from the Razer Sila App.



You are now set up, enjoy your newly created network!

