

RAZER
OROCHI



The perfect complement for gaming on the go, is a mouse that embodies the exact same qualities – portability without compromising on power. The Razer Orochi pushes boundaries by giving you gaming-grade performance in a compact and comfortable package. With up to 60 hours of battery life and the dual wired/wireless Bluetooth 4.0 technology, the Razer Orochi delivers gaming grade performance in wired mode, while being incredibly portable. Powered by an 8,200 DPI laser sensor - the most precise found in a notebook mouse to date - the Razer Orochi has exacting accuracy, so you'll always have the competitive edge even when you're gaming on the go.

CONTENTS

1. PACKAGE CONTENTS / SYSTEM REQUIREMENTS	3
2. REGISTRATION / TECHNICAL SUPPORT	4
3. TECHNICAL SPECIFICATIONS	5
4. DEVICE LAYOUT	6
5. SETTING UP YOUR RAZER OROCHI.....	7
6. INSTALLING YOUR RAZER OROCHI.....	11
7. CONFIGURING YOUR RAZER OROCHI.....	12
8. SAFETY AND MAINTENANCE.....	43
9. LEGALESE.....	45

1. PACKAGE CONTENTS / SYSTEM REQUIREMENTS

PACKAGE CONTENTS

- Razer Orochi Chroma
- 2x AA Batteries
- USB Cable
- Travel Pouch
- Important Product Information Guide

SYSTEM REQUIREMENTS

- PC / Mac with a free USB Port
- Windows® 10 / Windows® 8 / Windows® 7 / Mac OS X (10.8 or higher)
- Bluetooth® Smart Ready
- Internet connection
- 100 MB of free hard disk space

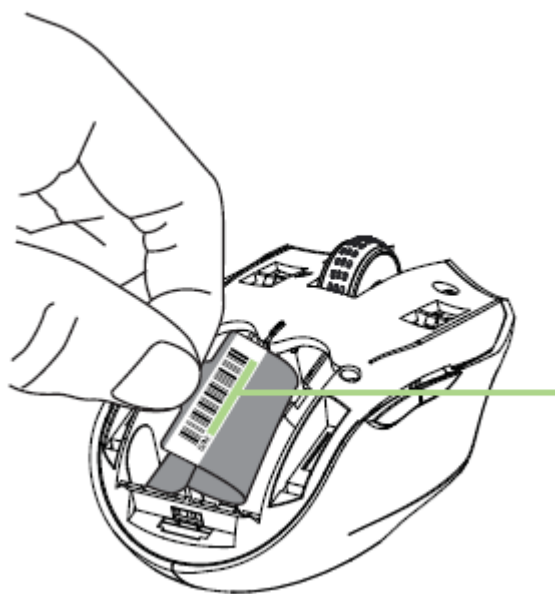
2. REGISTRATION / TECHNICAL SUPPORT

REGISTRATION

Visit www.razerzone.com/razer-id to sign up for a Razer ID now to get a wide range of Razer benefits. For example, get real-time information on your product's warranty status via Razer Synapse. To learn more about Razer Synapse and all its features, visit www.razerzone.com/synapse.

If you already have a Razer ID, register your product by clicking on your email address within the Razer Synapse application and select *Warranty Status* from the dropdown list.

To register your product online, visit www.razerzone.com/registration. Please note that you will not be able to view your warranty status if you register via the website.



*Your product's serial number
can be found here.*

TECHNICAL SUPPORT

What you'll get:

- 2 years limited manufacturer's warranty.
- Free online technical support at www.razersupport.com.

3. TECHNICAL SPECIFICATIONS

TECHNICAL SPECIFICATIONS

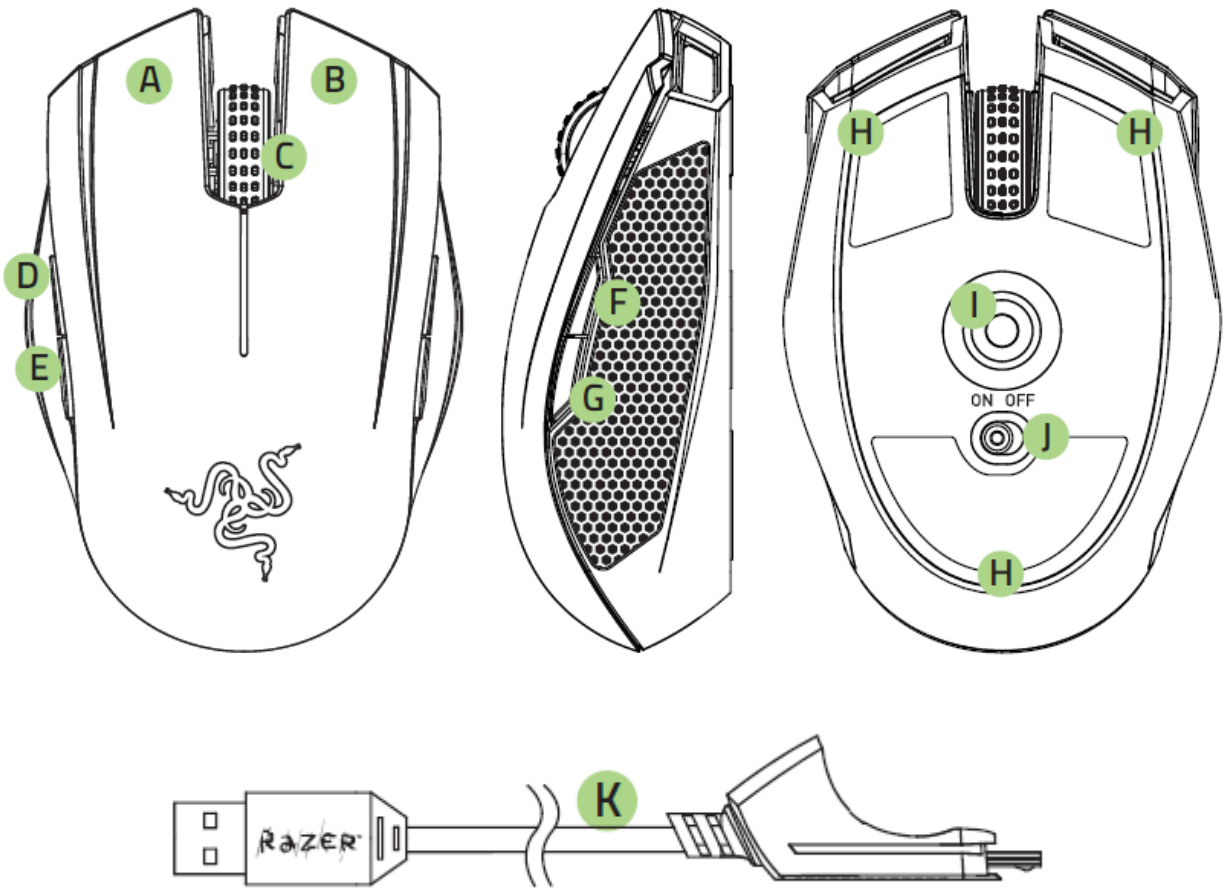
- Dual wired/wireless Bluetooth 4.0 technology
- 1,000 Hz Ultrapolling (Wired) / 125 Hz Ultrapolling (Wireless)
- 1 ms response time (Wired) / 8 ms response time (Wireless)
- 8,200 DPI 4G laser sensor
- On-The-Fly sensitivity adjustment
- 210 inches per second / 50 G acceleration
- Battery life: Approximately 60 hrs (continuous gaming) or 7 months (normal usage)*
- Ambidextrous form factor with textured rubber side grips
- Chroma customizable lighting
- Inter-device color synchronization
- Seven independently programmable buttons
- Razer Synapse enabled
- 1 m / 3.28 ft braided fiber USB cable

APPROXIMATE SIZE & WEIGHT:

- Length 99 mm / 3.90"
- Width 67 mm / 2.64"
- Height 35 mm / 1.38"
- Weight 68 g / 0.15 lbs

**Battery life depends upon its usage*

4. DEVICE LAYOUT



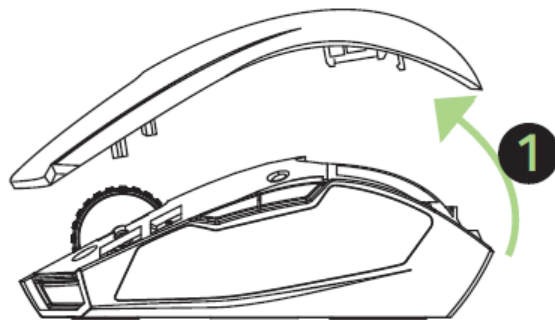
- A. Left mouse button
- B. Right mouse button
- C. Scroll wheel
- D. Mouse button 5
- E. Mouse button 4
- F. Sensitivity stage up*
- G. Sensitivity stage down*
- H. Ultraslick mouse feet
- I. 8,200 DPI 4G laser sensor
- J. Power on / off switch
- K. USB cable

**Once you have installed Razer Synapse, you will have access to more DPI options which you can configure to the Sensitivity buttons.*

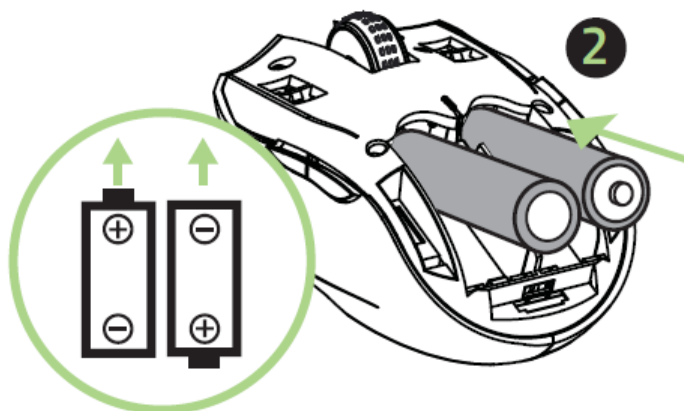
5. SETTING UP YOUR RAZER OROCHI

WIRELESS MODE

1. Remove the top cover of the Razer Orochi.

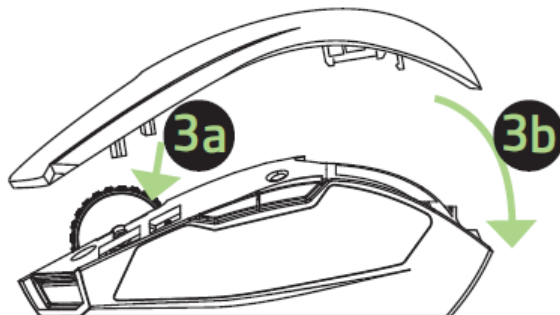


2. Insert the batteries* into the Razer Orochi following the directions indicated.

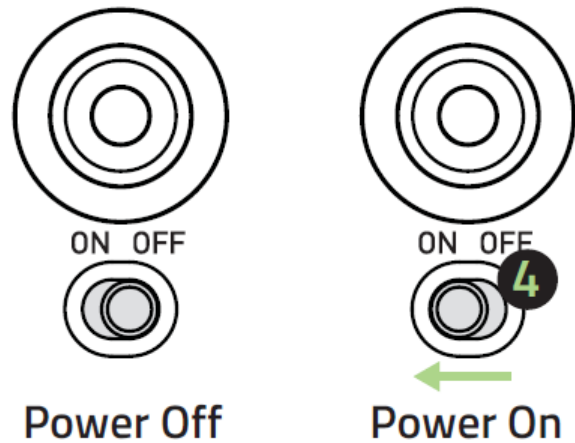


**Caution: For your safety, use only alkaline batteries and do not mix old batteries with new ones.*

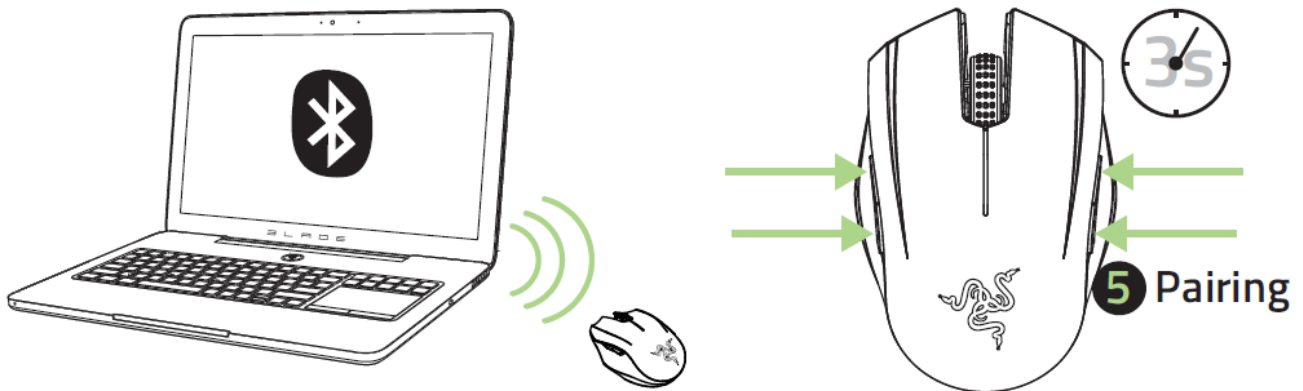
3. Reattach the top cover onto the Razer Orochi. Please ensure it is secured.



4. Switch on the Razer Orochi.



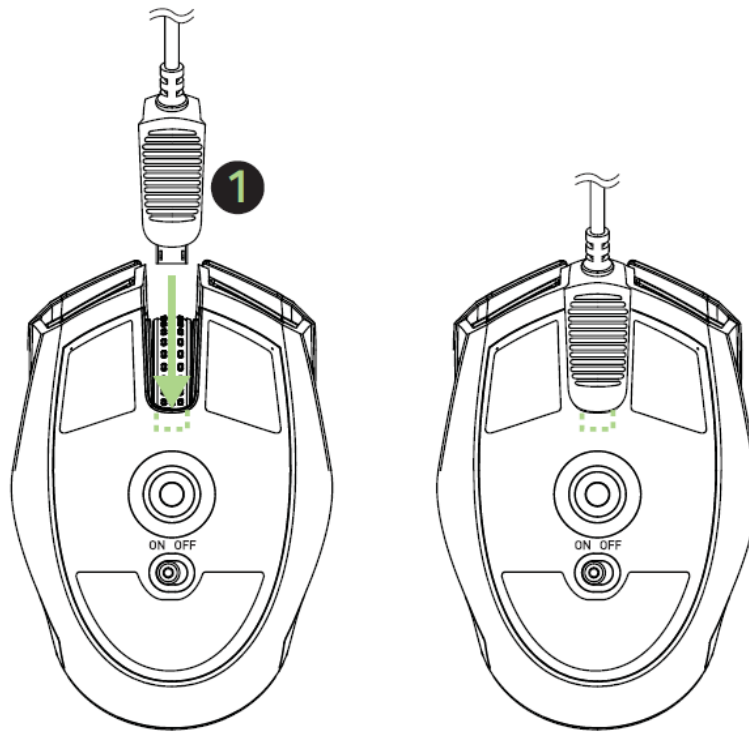
5. Please ensure that Bluetooth is activated on your computer. “Add a Bluetooth device” by following the instructions for your operating system. Activate the pairing process on the Razer Orochi by simultaneously pressing all **4 side buttons** for at least **3 seconds**. The indicator lights on the scroll wheel of the Razer Orochi will blink in blue to indicate the pairing process.



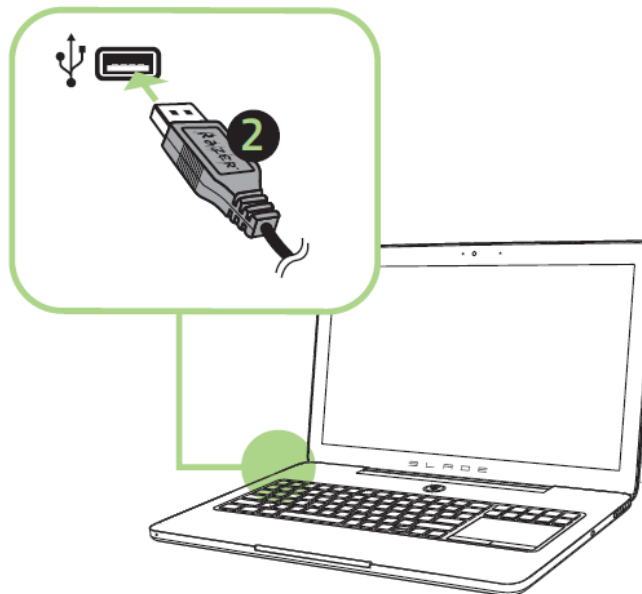
6. When the pairing process is completed, the indicator light will stop blinking. Your Razer Orochi is then ready for use in wireless mode.

WIRED MODE

1. Connect the micro-USB end of the cable to the Razer Orochi.



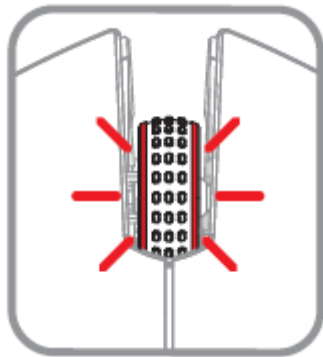
2. Plug the mouse into the USB port of your computer. The Razer Orochi is then ready for use as a high performance wired gaming mouse.



BATTERY / PAIRING INDICATOR BEHAVIOR

The Razer Orochi uses a specific lighting sequence on its scroll wheel to indicate its current battery status.

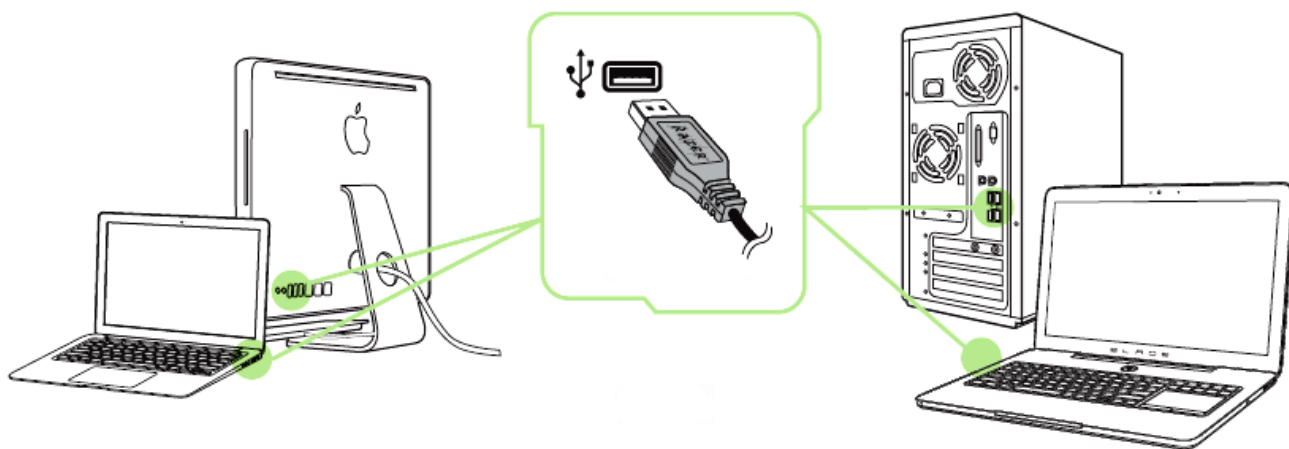
Low Power Indication:



Blinking

This lighting sequence will repeat every 3 minutes until the batteries are drained, the batteries are replaced, or the mouse is connected to the PC via the USB cable.

6. INSTALLING YOUR RAZER OROCHI



Step 1: Connect your Razer device to the USB port of your computer.

Step 2: Install Razer Synapse when prompted* or download the installer from www.razerzone.com/synapse.

Step 3: Register for a Razer ID or log in to Synapse with an existing account.

**Applicable for Windows 8 or later.*

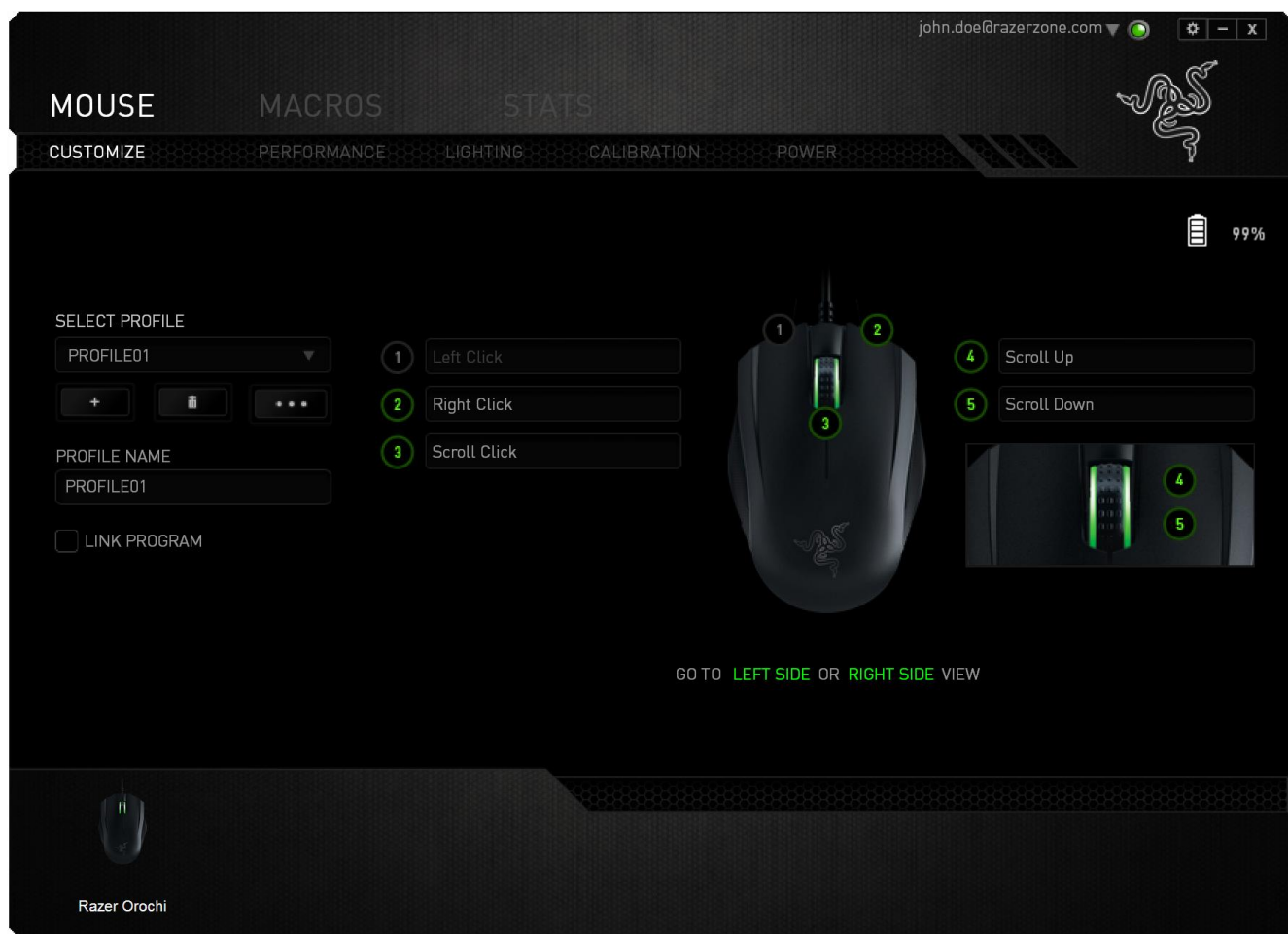
Note: By default, the Razer Orochi is set to spectrum cycling. To customize the lighting, please install Razer Synapse.

7. CONFIGURING YOUR RAZER OROCHI

Disclaimer: The features listed here require you to log in to Razer Synapse. These features are also subject to change based on the current software version and your Operating System.

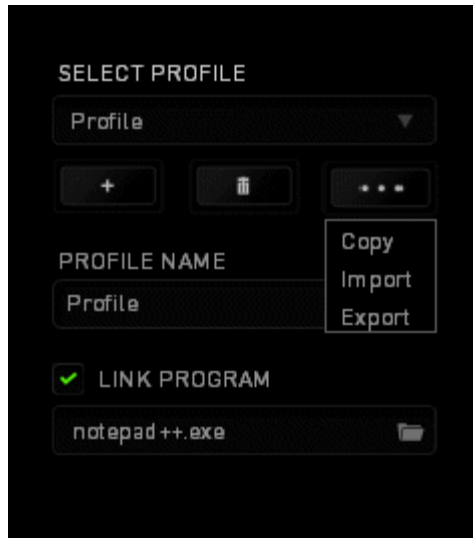
MOUSE TAB




The Mouse Tab is your default tab when you first install Razer Synapse. This tab allows you to customize your device's profiles, button assignments, performance and lighting.



Profile

A profile is a convenient way of organizing all your custom settings and you can have an infinite number of profiles at your disposal. Any changes made within each tab are automatically saved to the current profile and stored into the cloud servers.



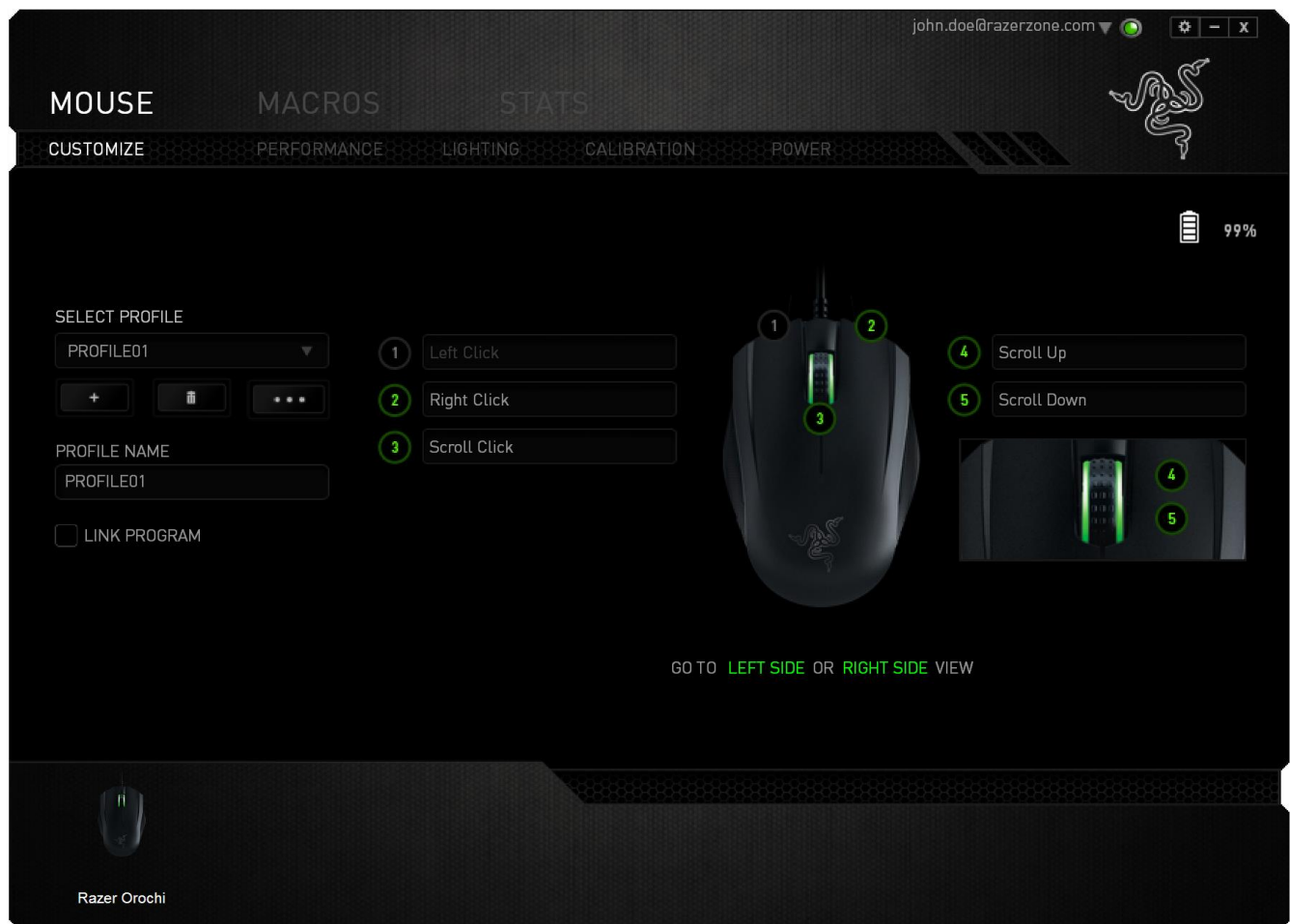
You can create a new profile by clicking the  button or delete the current profile by clicking the  button. The  button allows you to Copy, Import, and Export profiles. Your current profile by default is named “*Profile*” however; you can rename it by typing on the text field below *PROFILE NAME*. Each profile can also be set to automatically activate when you run a program or application through the use of the *LINK PROGRAM* option.

Customize Tab

The Customize Tab is where you can modify the basic functionalities of your device such as button assignments to suit your gaming needs. The changes made in this tab are automatically saved to your current profile.

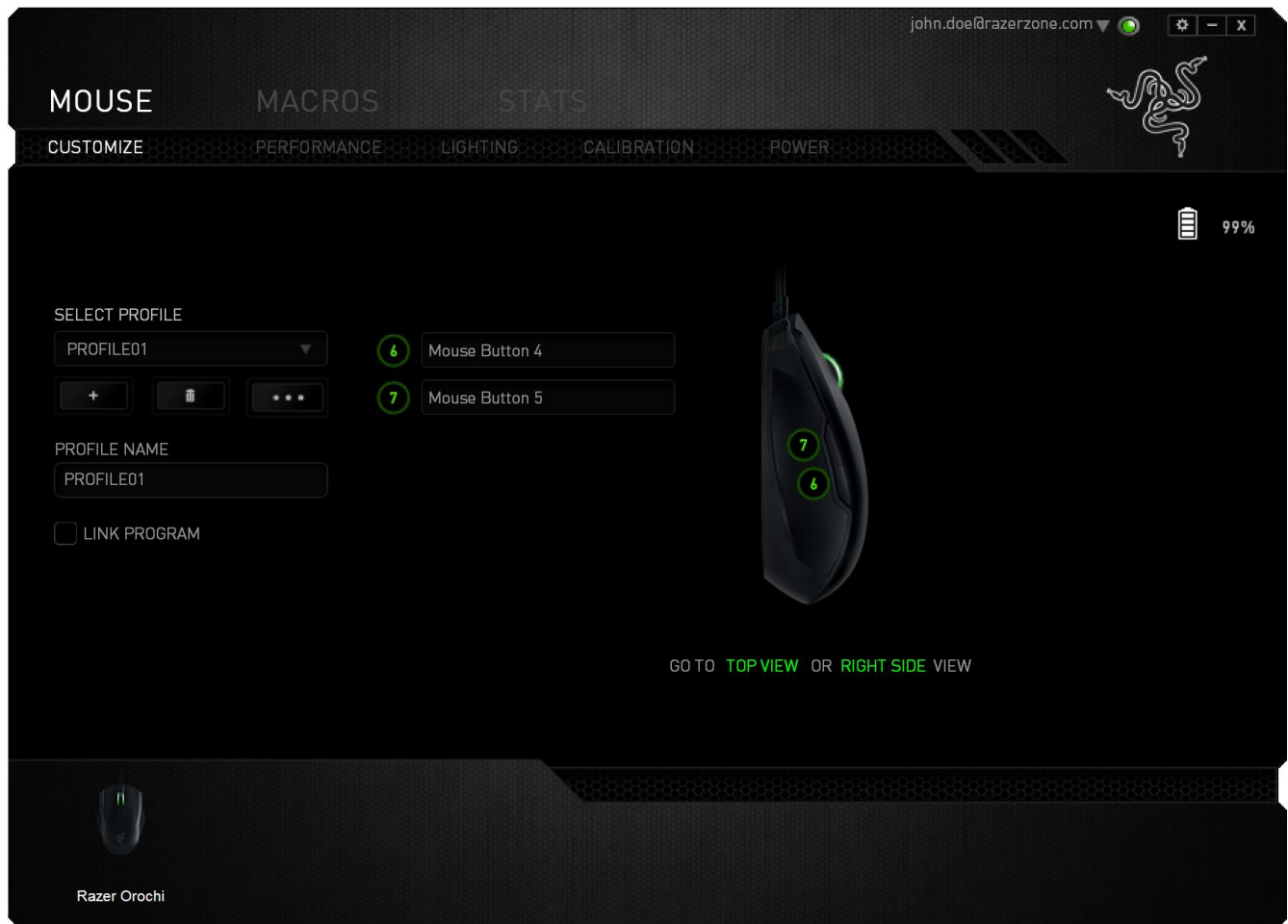
Top View

The Top View is where you can customize the 3 basic mouse buttons and the mouse wheel.



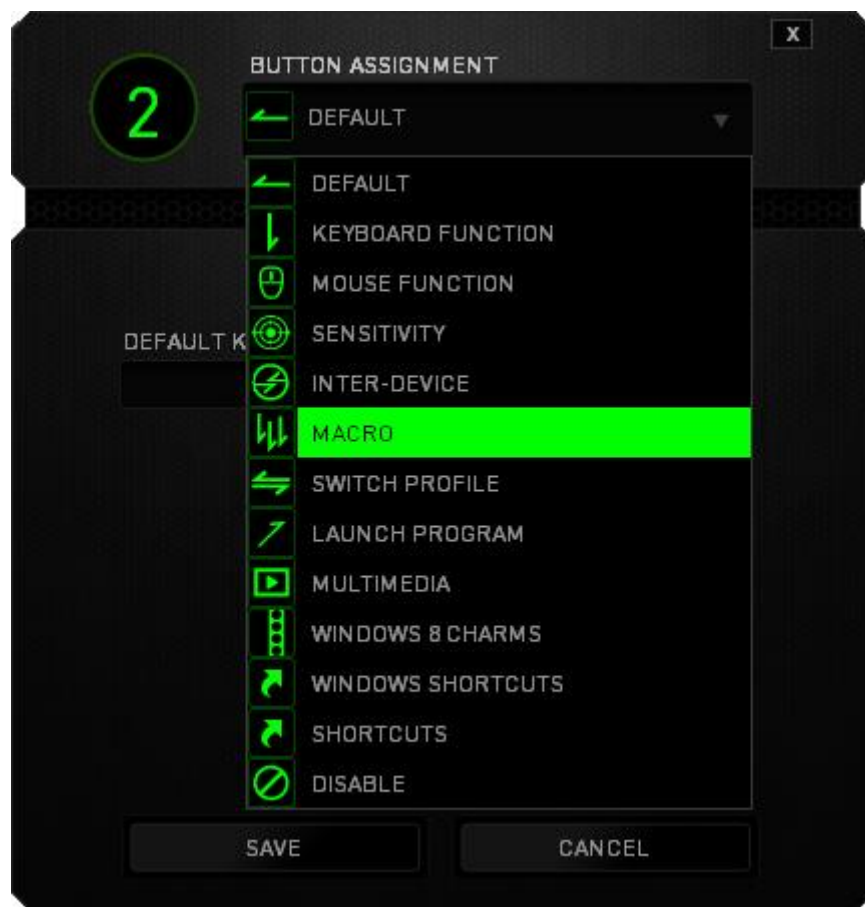
Left Side / Right Side View

The two views allow you to customize the side buttons of your mouse.



Button Assignment Menu

Initially, each of the mouse buttons is set to *DEFAULT*. However, you may change the function of these buttons by clicking the desired button to access the **BUTTON ASSIGNMENT** Menu.



Listed below are the customization options and their descriptions.



Default

This option enables you to return the key to its original function. To choose the *DEFAULT*, simply select it from the **BUTTON ASSIGNMENT** Menu.



Keyboard Function

This option enables you to change the mouse buttons into keyboard functions. To choose a keyboard function, select *KEYBOARD FUNCTION* from the **BUTTON ASSIGNMENT** Menu and enter the Key you wish to use on the given field below. You may also include modifier keys such as *Ctrl*, *Shift*, *Alt* or any of these combinations.



Mouse Function

This option allows you to change the mouse buttons into other mouse functions. To choose a mouse function, select *MOUSE FUNCTION* from the **BUTTON ASSIGNMENT** Menu and an *ASSIGN BUTTON* submenu will appear.

Listed below are the functions which you can choose from the Assign Button submenu:

Left Click	- Performs a left mouse click using the assigned button.
Right Click	- Performs a right mouse click using the assigned button.
Scroll Click	- Activates the universal scrolling function.
Double Click	- Performs a double left click using the assigned button.
Mouse Button 4	- Performs a “Backward” command for most internet browsers.
Mouse Button 5	- Performs a “Forward” command for most internet browsers.
Scroll Up	- Performs a “Scroll Up” command using the assigned button.
Scroll Down	- Performs a “Scroll Down” command using the assigned button.
Scroll Left	- Performs a “Scroll Left” command using the assigned button.
Scroll Right	- Performs a “Scroll Right” command using the assigned button.



Sensitivity

Sensitivity refers to how fast the mouse pointer can travel across the screen. When you select the Sensitivity function from the **BUTTON ASSIGNMENT** Menu, a sub-menu will appear which gives you access to the following options:

Sensitivity Clutch	- Change to a predefined sensitivity as long as the designated button is pressed. Releasing the button will return it to the previous sensitivity.
Sensitivity Stage Up	- Increase the current sensitivity by one stage. See the PERFORMANCE TAB to learn more about sensitivity stages.
Sensitivity Stage Down	- Decrease the current sensitivity by one stage. See the PERFORMANCE TAB to learn more about sensitivity stages.

On-The-Fly Sensitivity

- Readily adjust the current sensitivity using the assigned button. If On-The-Fly Sensitivity has been set, pressing the designated button and moving the scroll wheel will produce a bar on your screen which would indicate your current sensitivity level.

Cycle Up Sensitivity Stages

- Increase the current sensitivity stage by one and once it reaches the highest sensitivity stage, it will return to stage 1 when the button is pressed again. See the PERFORMANCE TAB to learn more about sensitivity stages.

Cycle Down Sensitivity Stages

- Decrease the current sensitivity stage by one and once it reaches stage 1, it will return to the highest sensitivity stage when the button is pressed again. See the PERFORMANCE TAB to learn more about sensitivity stages.



Inter-device

Inter-device allows you to change the functionality of other Razer Synapse enabled devices. Some of these functionalities are device-specific such as using your Razer gaming keyboard to change the Sensitivity Stage of your Razer gaming mouse. When you select Inter-device from the Button Assignment Menu, a sub-menu will appear.

DEVICE TO LINK allows you to choose which currently connected Razer device can be linked while FUNCTION allows you to choose which functionality you want to use for the linked device.



Macro

A Macro is a prerecorded sequence of keystrokes and button presses that is executed with precise timing. By assigning a Macro to a button, you can execute complex combinations with ease. The *ASSIGN MACRO* allows you to choose which recorded Macro to use while the *PLAYBACK OPTION* enables you to choose the behavior of the Macro. See the **MACROS TAB** to learn more about creating Macro commands.




Switch Profile

The Switch Profile enables you to change profiles on the fly and immediately load all your pre-configured settings. When you select Switch Profile from the BUTTON ASSIGNMENT Menu, a sub-menu will appear that will allow you to choose which profile to use. An on-screen display will automatically appear whenever you switch profiles.



Launch Program

The Launch Program allows you to run a program using the assigned button. When you select Launch Program from the BUTTON ASSIGNMENT Menu, a  button will appear which allows you to search for the specific program you want to use.



Multimedia Function

This option allows you to bind multimedia playback controls to your device. After selecting Multimedia Function, a submenu will appear. Listed below are the multimedia playback controls you can choose from the submenu:

Volume Down	- Decreases the audio output.
Volume Up	- Increases the audio output.
Mute Volume	- Mutes the audio.
Mic Volume Up	- Increases the microphone volume.
Mic Volume Down	- Decreases the microphone volume.
Mute Mic	- Mutes the microphone.
Mute All	- Mute both microphone and audio output.
Play / Pause	- Play, pause, or resume playback of the current media.
Previous Track	- Play the previous track.
Next Track	- Play the next track.



Windows 8 Charms

This option enables you to assign the key into an Operating System shortcut command. For more information please visit: <http://windows.microsoft.com/en-sg/windows-8/getting-around-tutorial>.



Windows Shortcut

This option enables you to assign the key into an Operating System shortcut command. For more information please visit: <http://support.microsoft.com/kb/126449>.



Shortcuts

This option enables you to assign the key into an Operating System shortcut command. For more information please visit: <http://support.apple.com/kb/ht1343>.

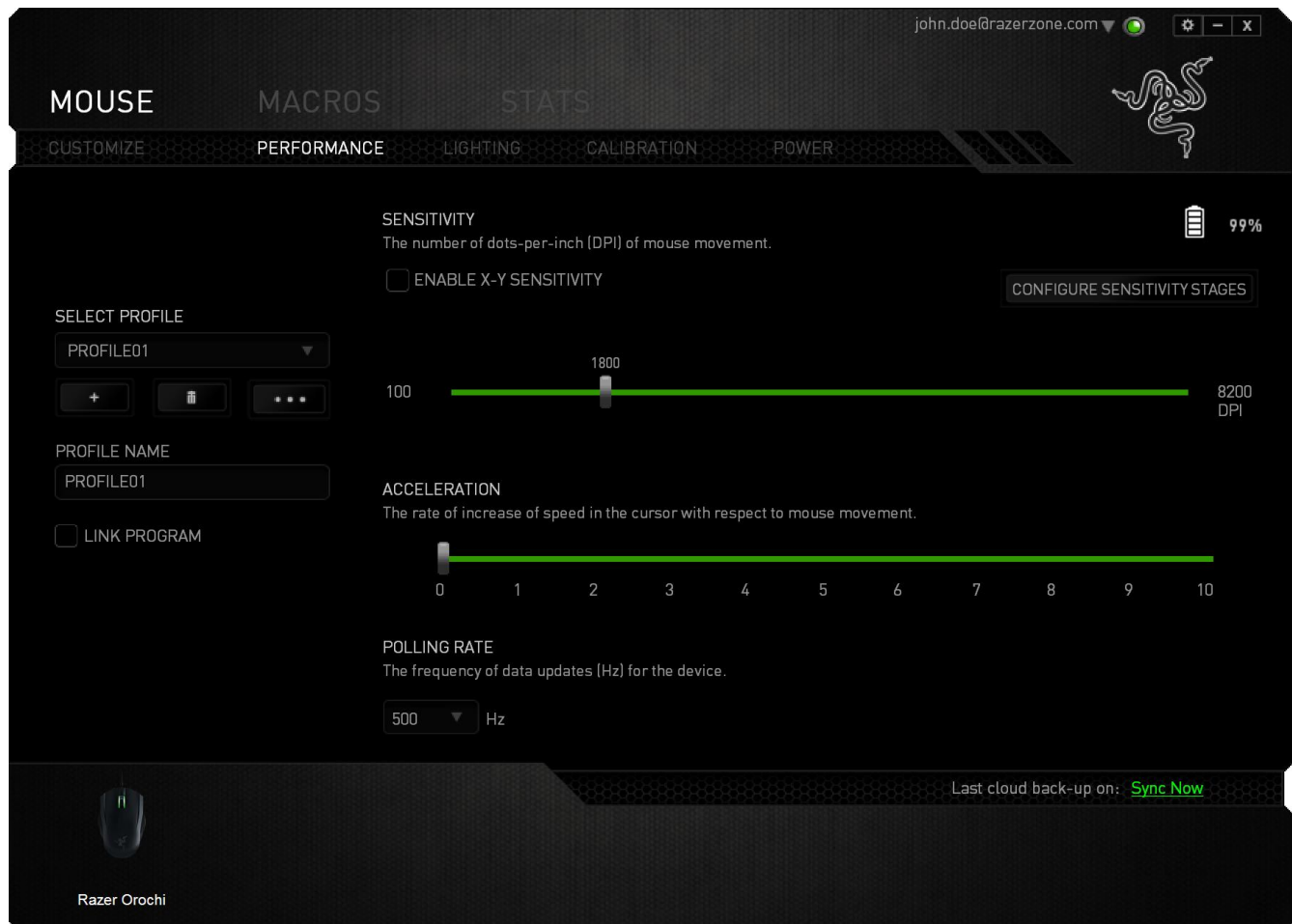


Disable

This option renders the assigned button unusable. Use Disable when you have no need for a button or if a particular button interferes with your gaming.

Performance Tab

The Performance Tab allows you to enhance the speed and precision of your mouse pointer. Similar to the Customize Tab, the changes made here are automatically saved to your current profile.



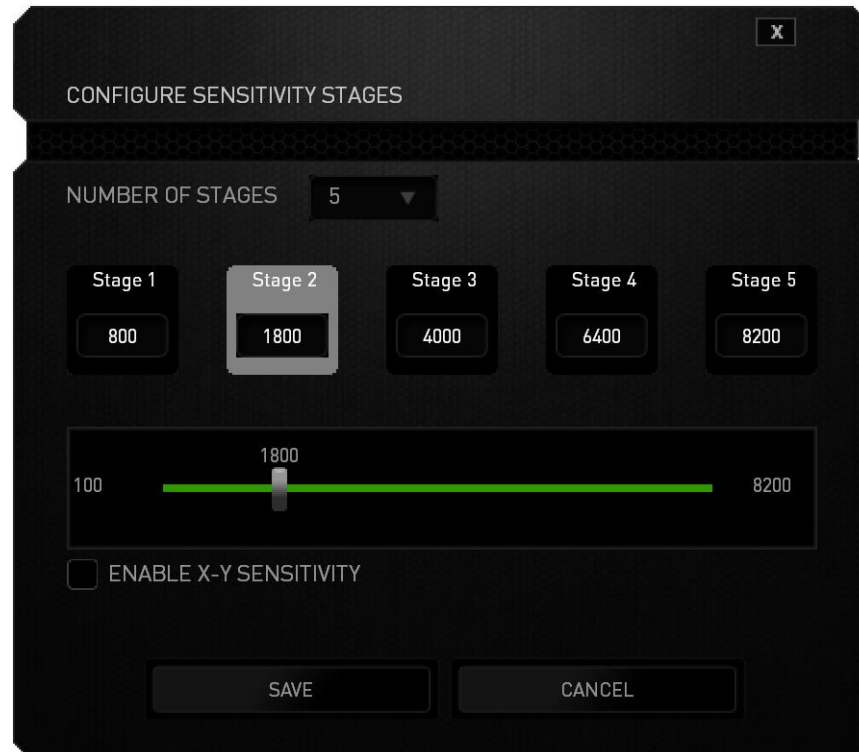
Listed below are the performance options and their descriptions.

Sensitivity

Sensitivity pertains to how much effort is needed to move the mouse pointer in any direction. The higher the sensitivity, the more responsive the mouse will be. (Recommended setting: 1600 – 1800)

Enable X-Y Sensitivity

By default, the X-axis (horizontal) and Y-axis (vertical) use the same sensitivity values. However, you may set different sensitivity values to each of the axes by selecting the *ENABLE X-Y SENSITIVITY* option.



Configure Sensitivity Stages

A sensitivity stage is a preset sensitivity value. You can create up to 5 different sensitivity stages which you can cycle through using the sensitivity stage up/down buttons. You may use the *ENABLE X-Y SENSITIVITY* concurrently with this option. Note that whenever you configure a sensitivity stage, your current sensitivity will match that setting.

Acceleration


Acceleration increases the cursor's movement speed depending on how quickly you move the mouse. The higher the value, the faster the mouse accelerates. (Recommended settings: Windows 0, Mac 5)

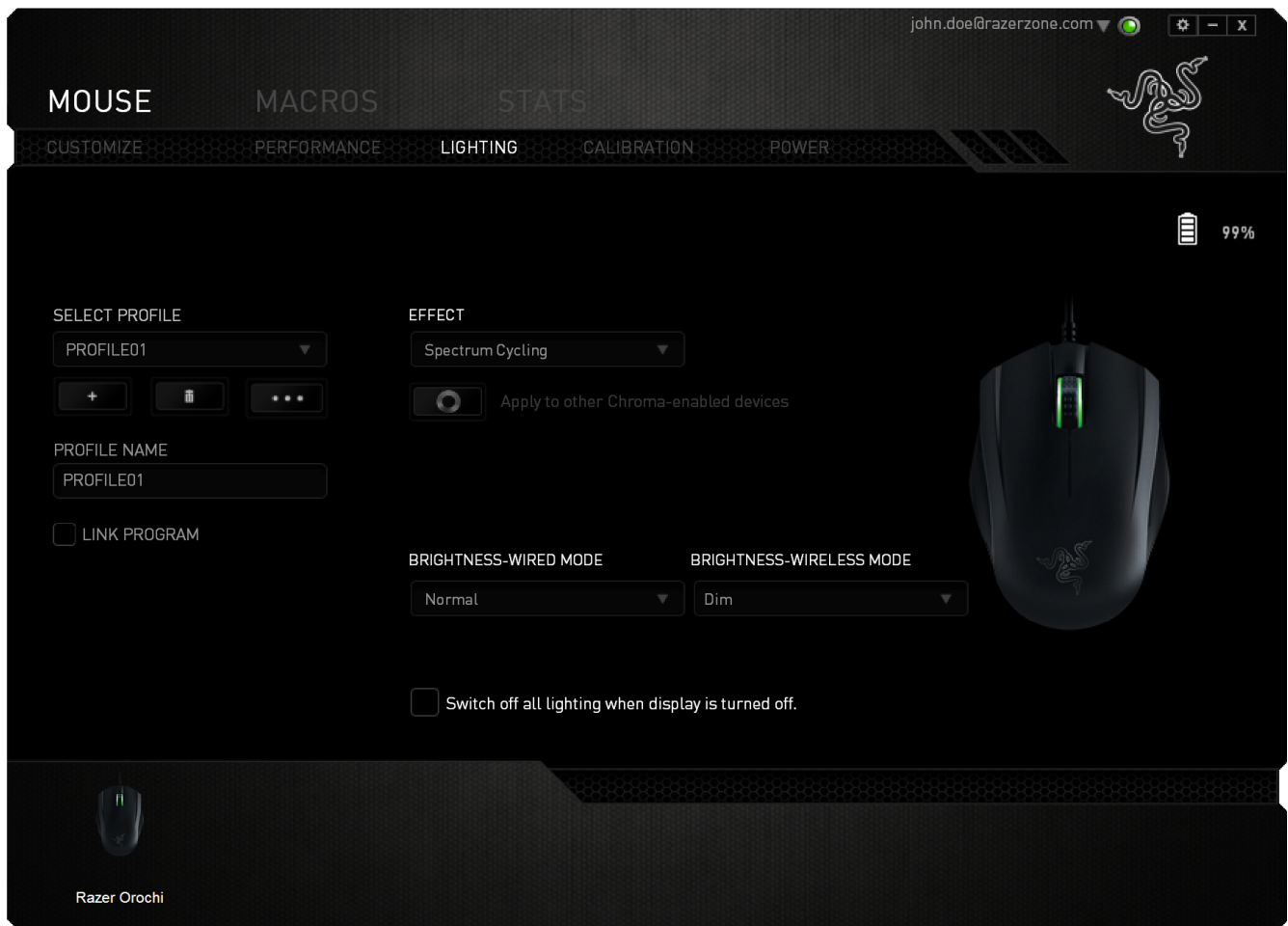
Polling Rate

The higher the polling rate, the more often the computer receives information about the status of your mouse, thus increasing the mouse pointer's reaction time. You can switch between 125Hz (8ms), 500Hz (2ms) and 1000Hz (1ms) by selecting your desired polling rate on the dropdown menu. (Recommended setting: 500Hz – 1000Hz)

Note: Polling rate in wireless mode is set at 125Hz and cannot be modified.

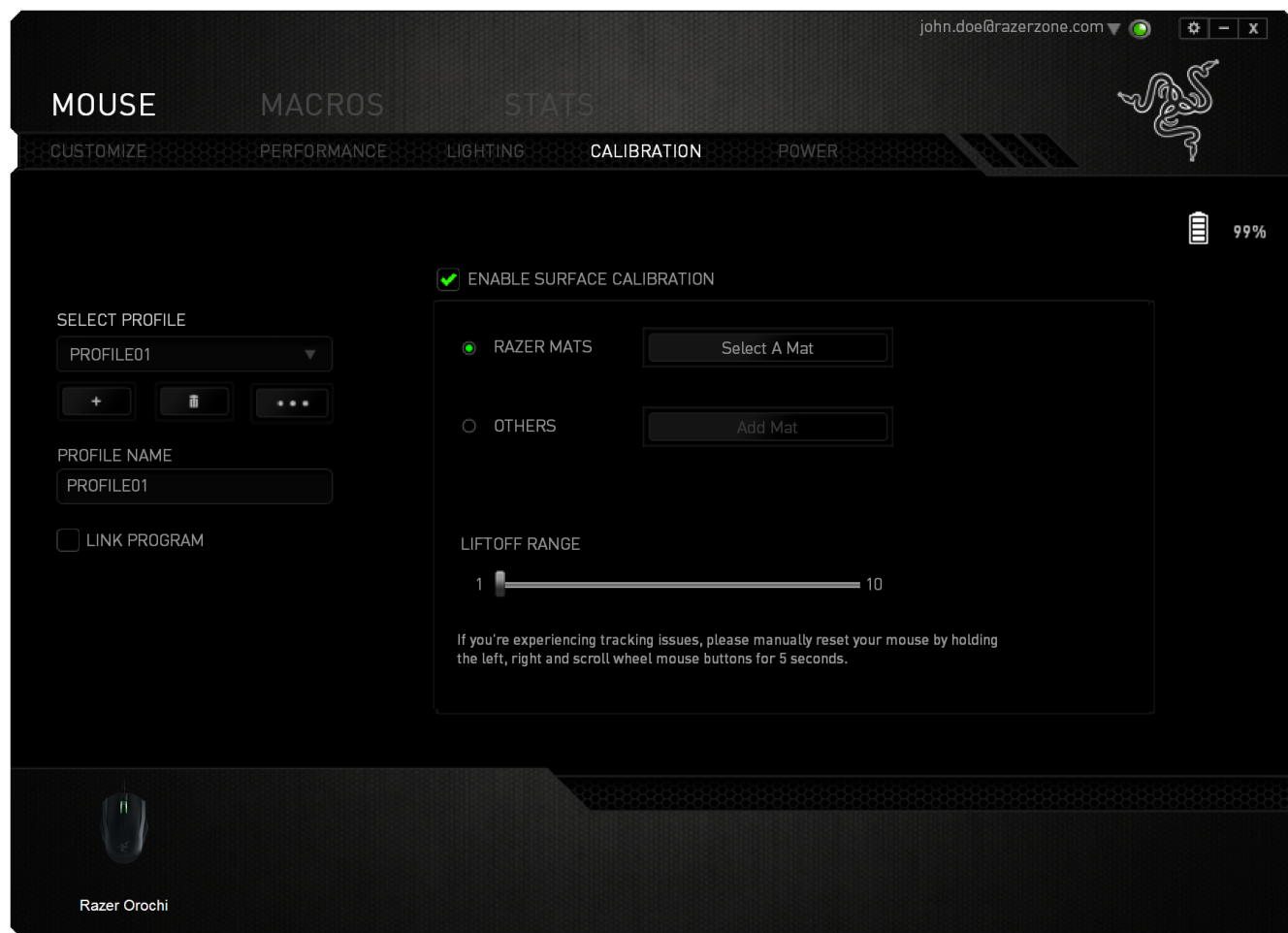
Lighting Tab

The Lighting Tab allows you to customize the look of your gaming mouse by choosing from over 16 million colors for the backlight or you may select the *SPECTRUM CYCLING* option to allow the colors to change indefinitely. If you have other Chroma-enabled devices, you can synchronize all lighting scheme by clicking the  button.



Calibration Tab


The Calibration Tab allows you to optimize your Razer Precision Sensor to any mousing surface for better tracking. To use this feature, you must select the ON option under *SURFACE CALIBRATION*.

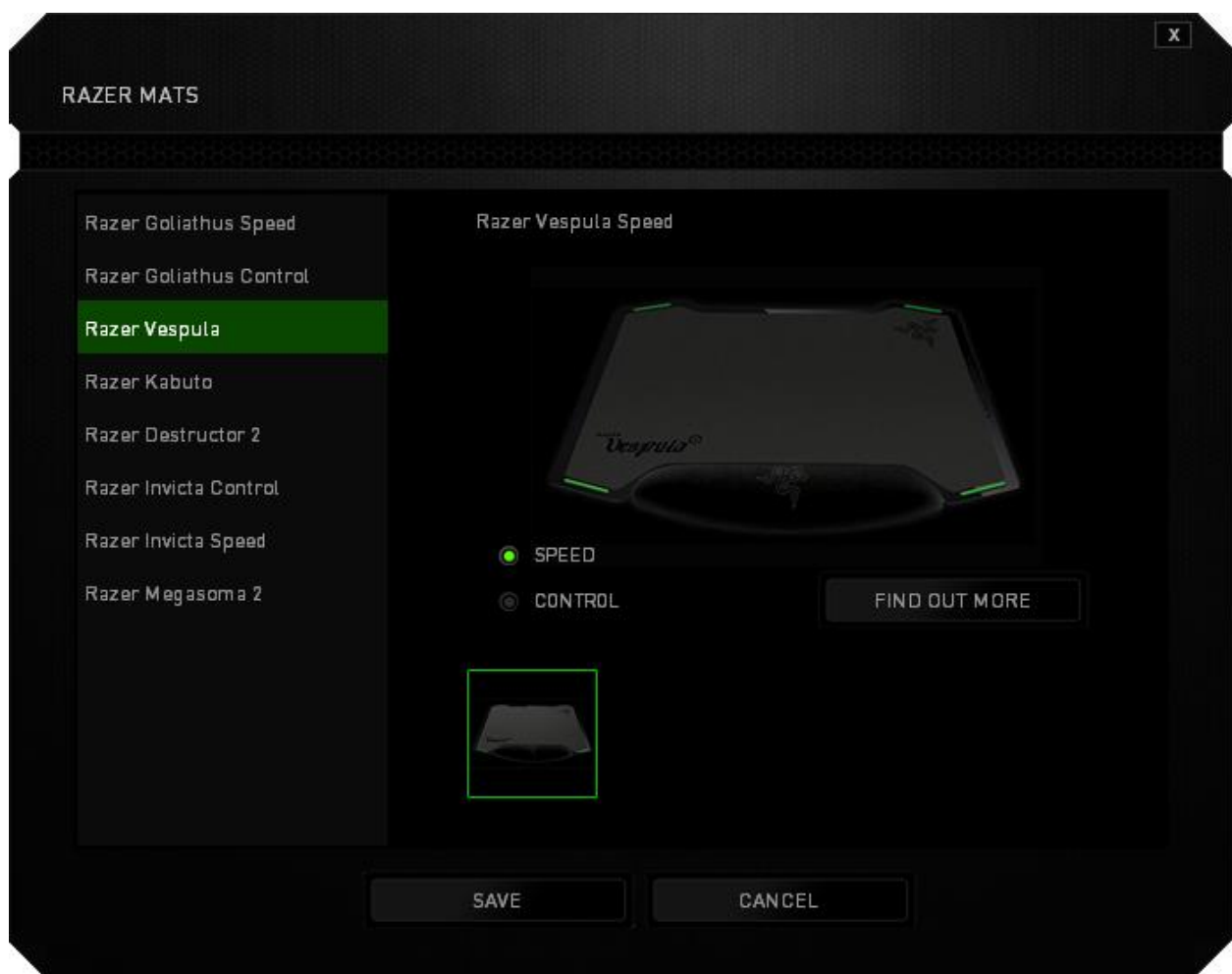



The *LIFTOFF RANGE* allows you to set the distance in which the sensor stops tracking as it is being lifted away from its mousing surface. To use this feature, you must first activate *SURFACE CALIBRATION* then choose an appropriate mousing surface.

Razer Mouse Mats


The Razer Orochi is ‘tuned’ or optimized especially for Razer mouse mats. This means that the sensor has been tested extensively to confirm that the Razer Orochi reads and tracks best when paired with Razer mouse mats.

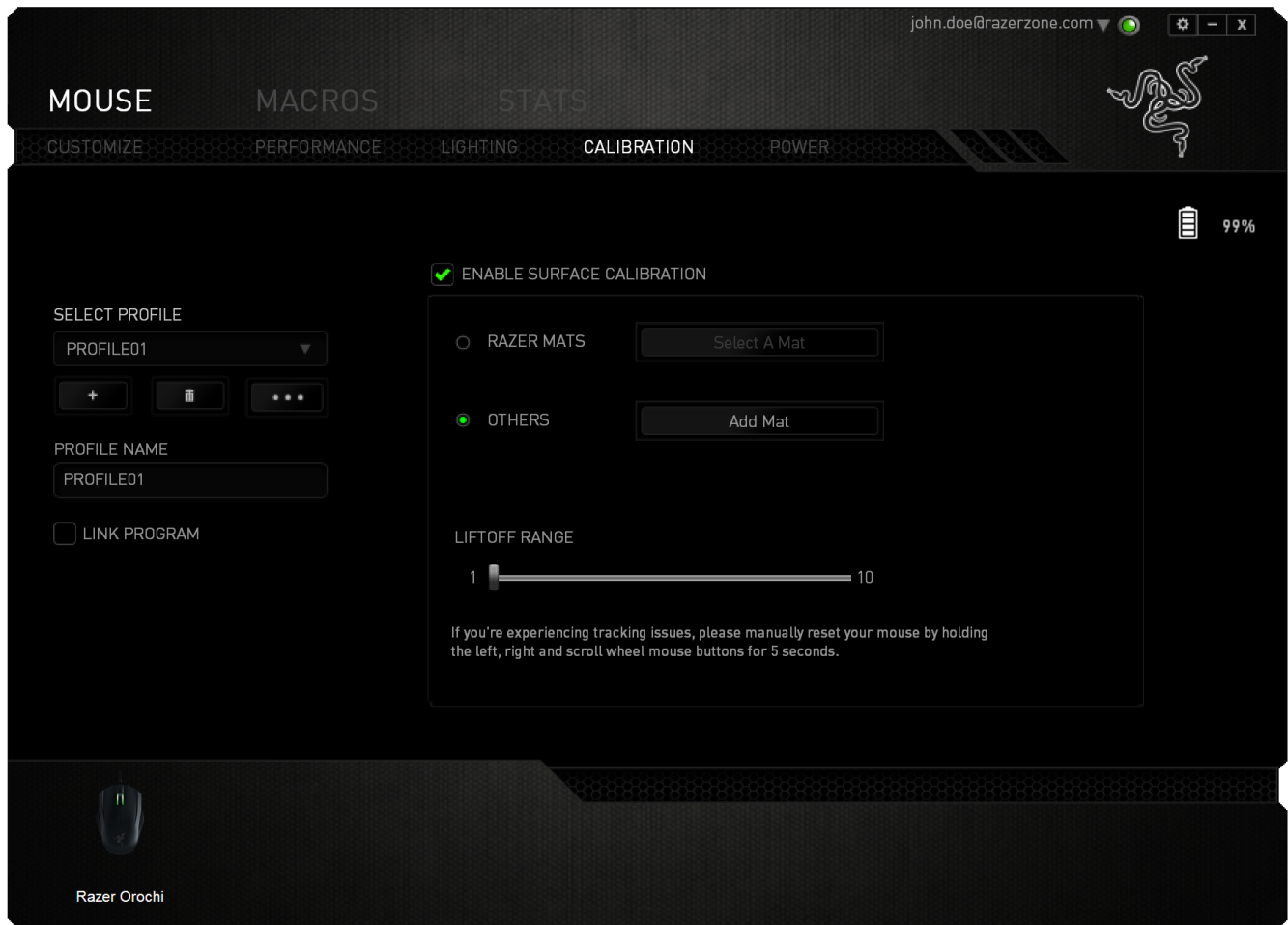
If you are using a Razer mouse mat, click the  button to access the Razer Mats submenu. This menu showcases an extensive list of Razer-branded mouse mats. Select the appropriate mouse mat from the list; then choose between *SPEED* or *CONTROL* if applicable.



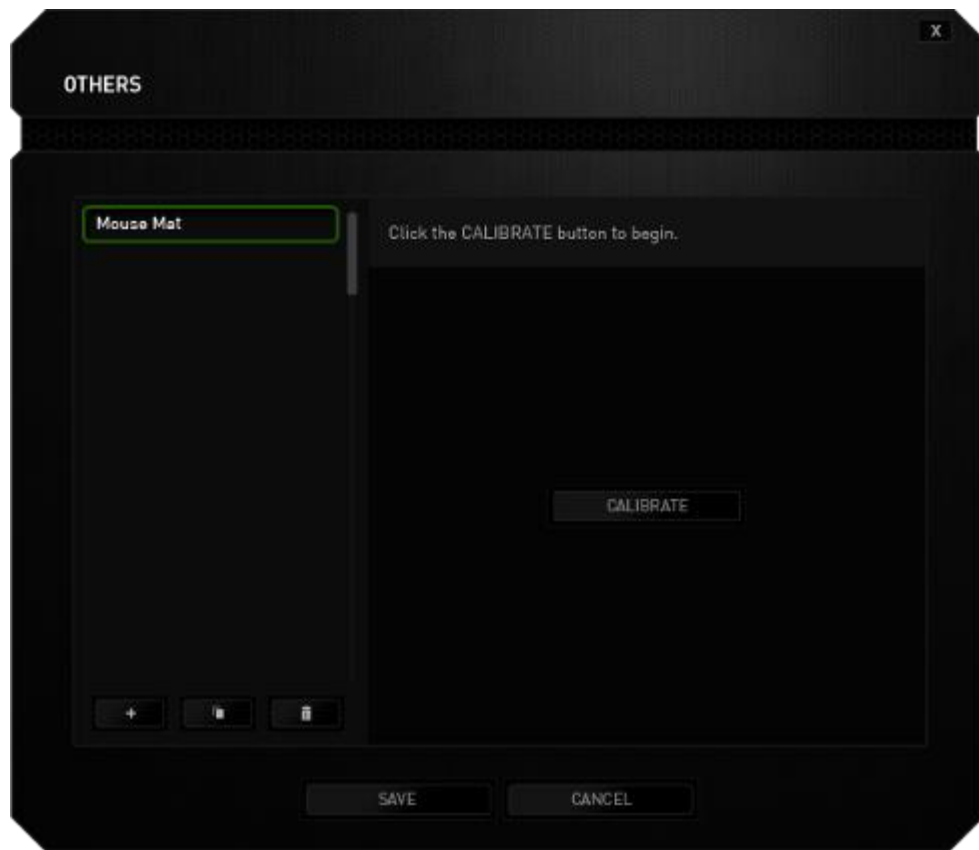
If you wish to learn more about a particular mouse mat or if you wish to purchase a Razer mouse mat, you may do so by clicking the  button.


Other Mousing Surfaces

If you are using a non-Razer mouse mat or a non-standard mousing surface, select *OTHERS* then click the  button to access the manual calibration submenu.

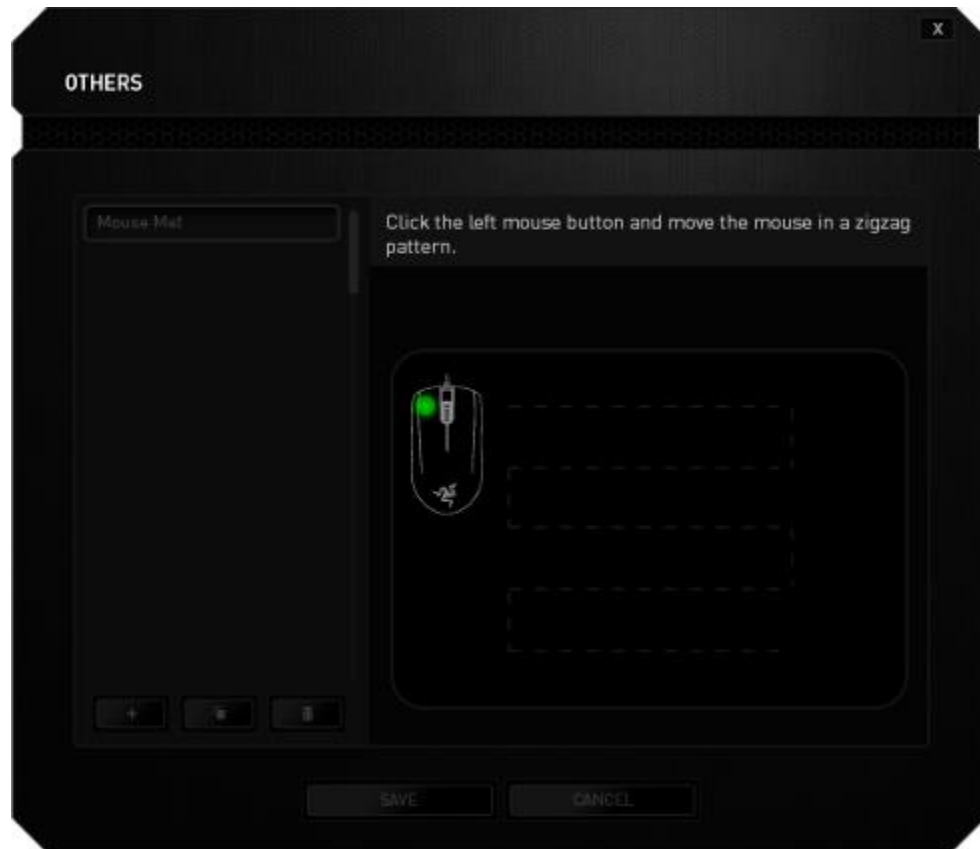


This submenu enables you to manually adjust the Razer Precision Sensor to suit any mousing surface.






To begin calibrating the sensor, click the  button. After clicking the button, Razer Synapse will begin tuning the sensor. Please avoid moving the Razer Orochi during this time.

Once the Razer Precision Sensor is ready, press the left mouse button then move the mouse across your entire mousing surface in a zigzag pattern as shown on the screen guide.

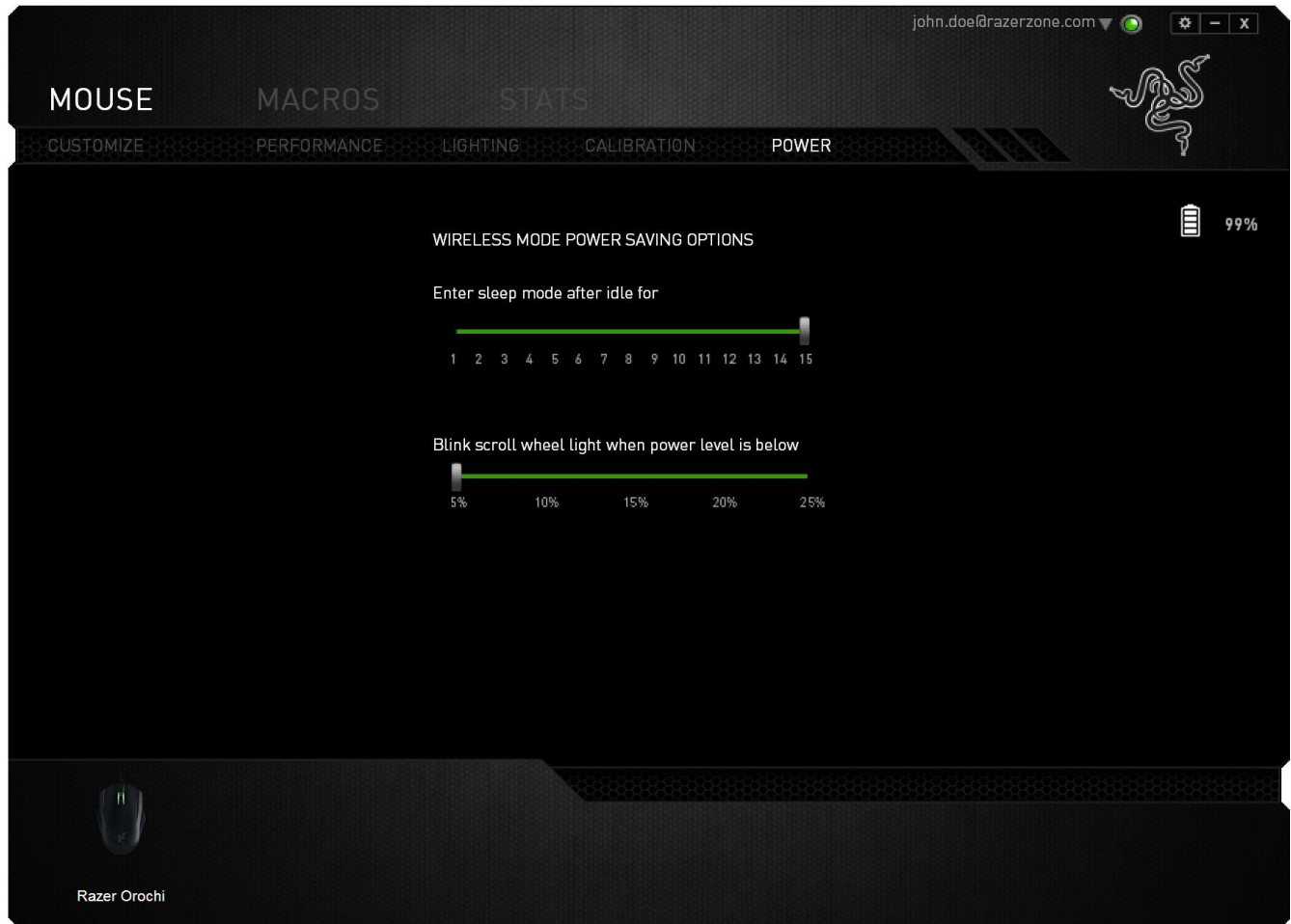


When you have moved through your entire mousing surface, press the left mouse button again. This will bring you back to the manual calibration submenu which contains new information regarding your mousing surface.

There are also other options available in this section such as adding a new mouse mat setting by clicking the  button, deleting the currently selected mouse mat setting by clicking the  button or duplicating the currently selected mouse mat setting by clicking the  button.

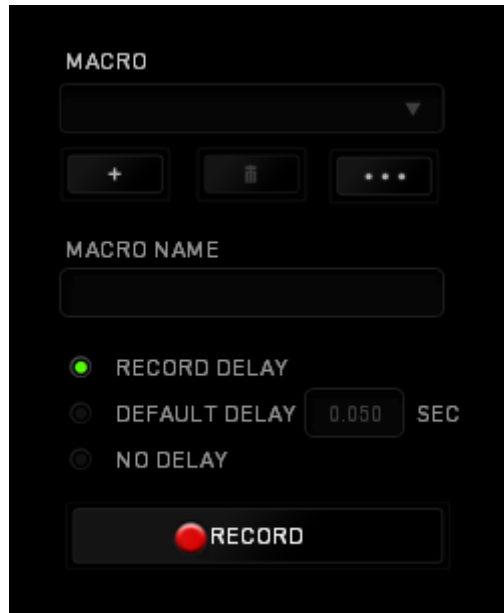
Power Tab




The Power Tab allows you to manage your device's energy consumption when running on batteries. You can also set your device to enter sleep mode when it has been idle for a certain amount of time. The Power Tab also allows you to be notified when the device's power is at a certain level.





MACROS TAB

The Macros Tab allows you to create a series of precise keystrokes and button presses. This tab also allows you to have numerous macros and extremely long macro commands at your disposal.



The Macro section works similarly to Profile wherein you can rename a macro by typing on the field below *MACRO NAME*. There are also other options available in the macro section such as creating a new macro by clicking the  button, deleting the current macro by clicking the  button or duplicating the current macro by clicking the  button.

To create a macro command, simply click the  button and all your keystrokes and button presses will automatically register on the macro screen. When you are done recording your macro commands, click on the  button to end the session.





The Macro section allows you to input the delay in-between commands. In *RECORD DELAY* the delay in-between commands are registered as how it is entered. The *DEFAULT DELAY* uses a predefined time (expressed in seconds) as the delay. And *NO DELAY* omits all the pauses in-between keystrokes and button presses.





Note: You may use up to three decimal places when inserting values on the seconds (sec) field.

Once you have recorded a macro, you may edit the commands you have entered by selecting each command on the macro screen. Each keystroke or button press is arranged sequentially with the first command shown at the top of the screen.

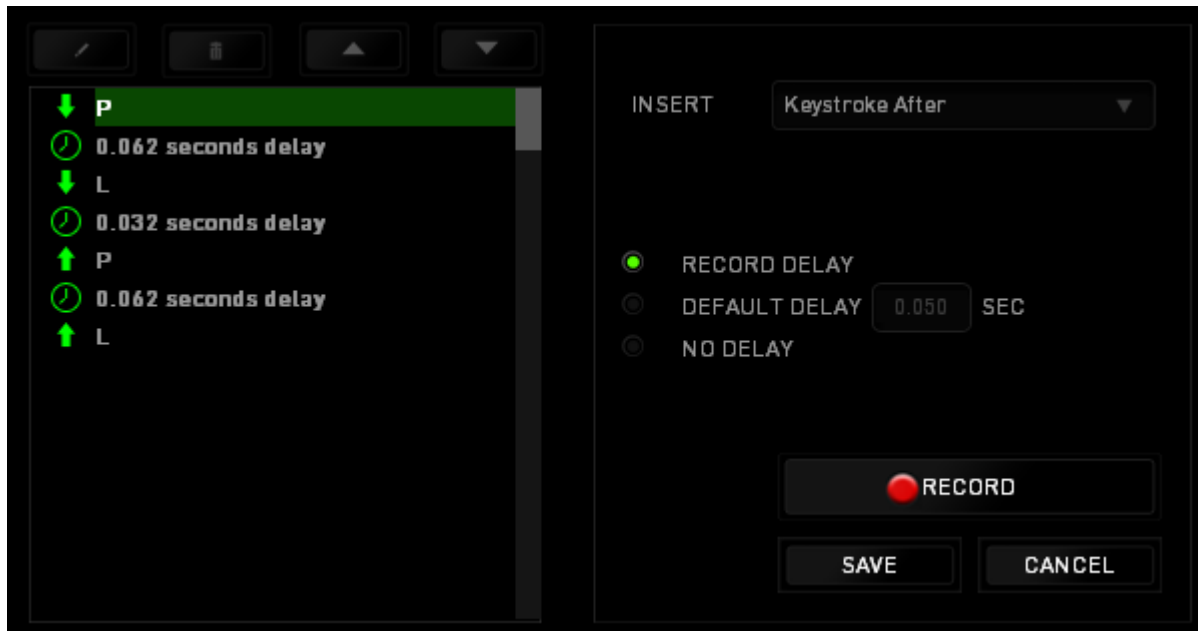



The  button allows you to edit a particular command and the  button enables you to delete a command. The  and  buttons gives you the option to move the command up or down.

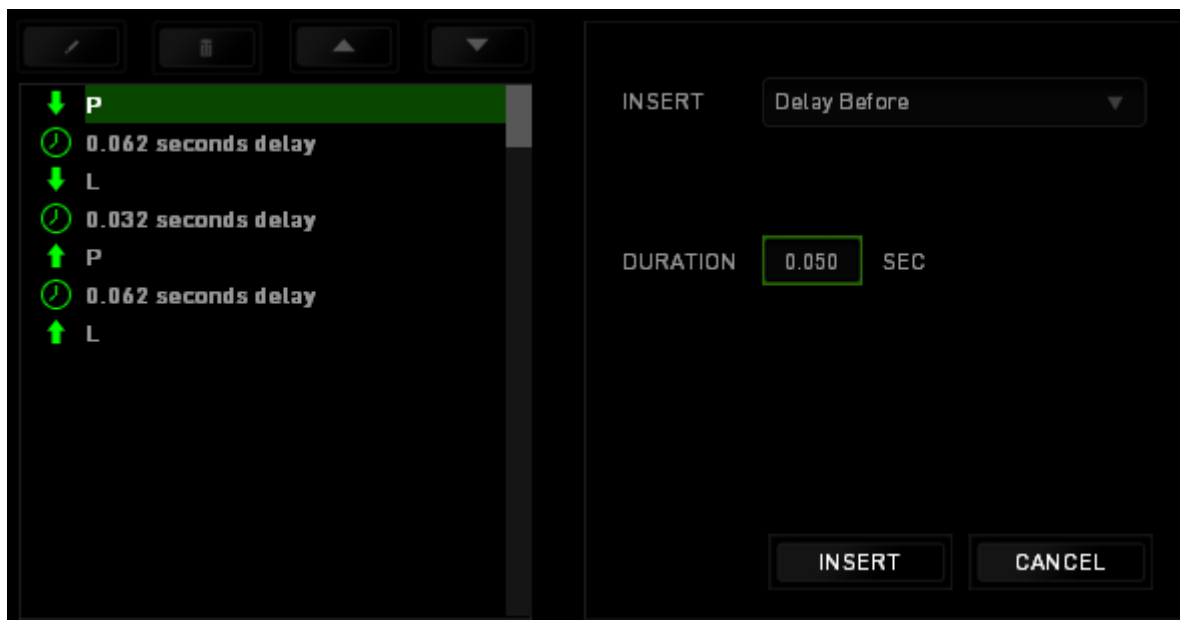
The  button allows you to put in additional keystrokes, button presses or time delays either before or after the selected command.

Once you have pressed the  button, a new display window will appear beside the list of macro commands. The dropdown menu on this window allows you to choose a keystroke or a delay to be added in before or after the highlighted macro command.





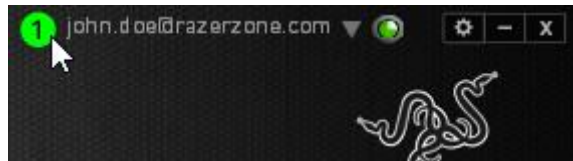
You may add in a new set of macro commands by clicking the  button on the keystroke menu; or input time delays on the duration field using the delay menu.



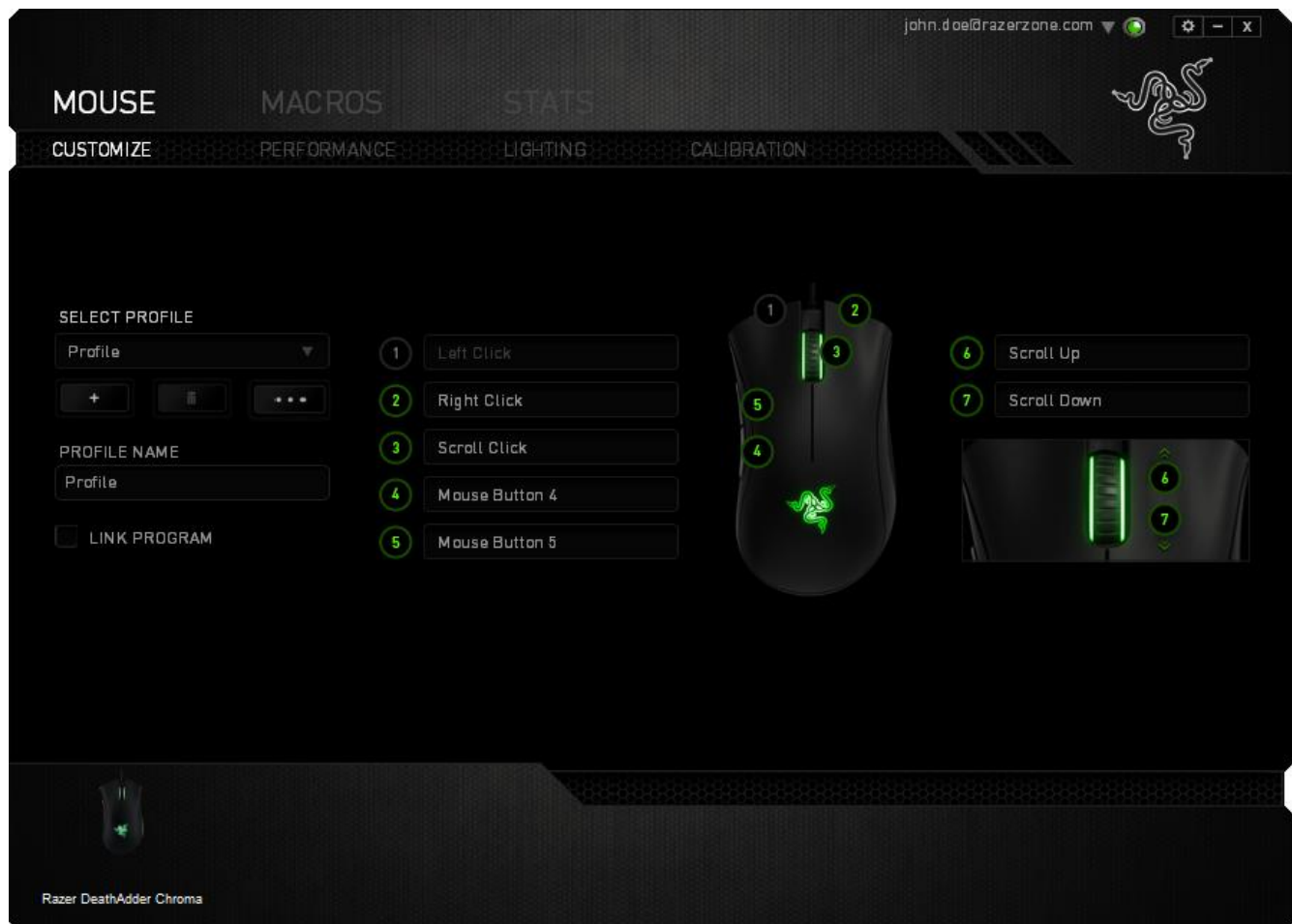
STATS & HEATMAPS

Note: The images shown here are for reference only and may differ from the actual device.

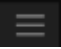
Stats & Heatmaps help you analyze your gameplay by tracking your in-game mouse clicks, mouse movement and keyboard usage and visualizing it in form of heatmap overlays. This function is disabled by default. To enable this function, click the notification icon next to your user name in the Razer Synapse window and select “Enable Stats & Heatmaps”.

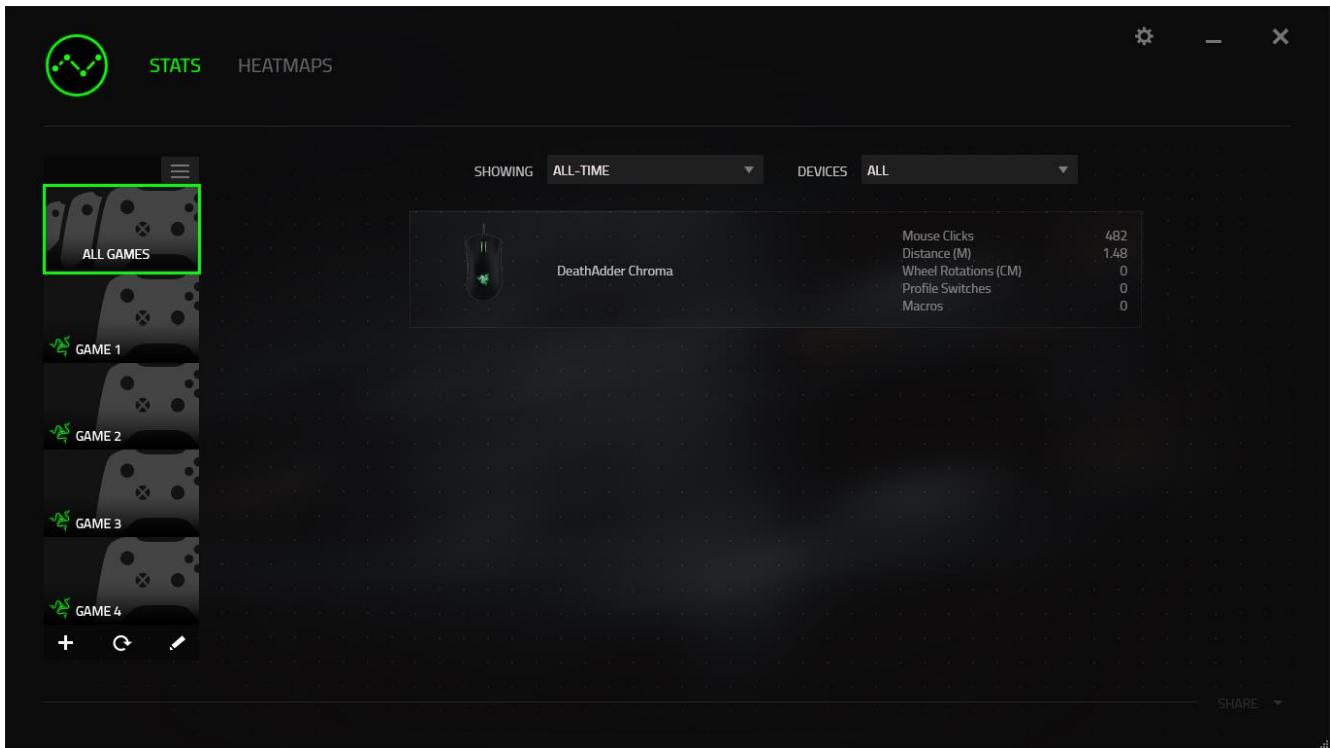





Confirm to enable the function in the dialog box that appears. Return to Razer Synapse and a new “Stats” tab will be available. Simply click the tab to open the function window.



Games List

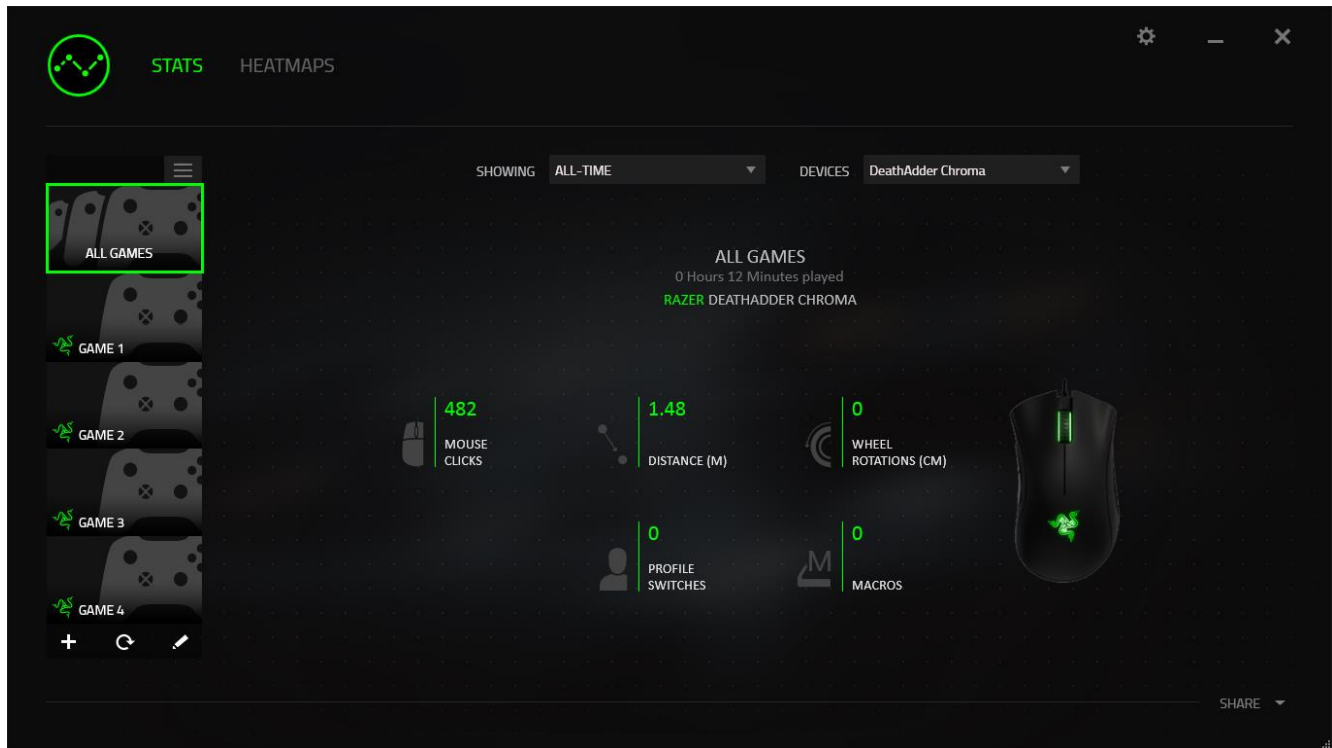
Stats & Heatmaps work by tracking the usage of all supported devices for each game. When the feature is enabled, it automatically scans your system for installed games and adds them to the Games List located on the left side of the screen. Click  to show or hide the Games List.



From this list, you can add more games that have not been automatically detected, using the , edit games with the  button or re-scan your system with the  button to search for newly installed games.

Stats Tab

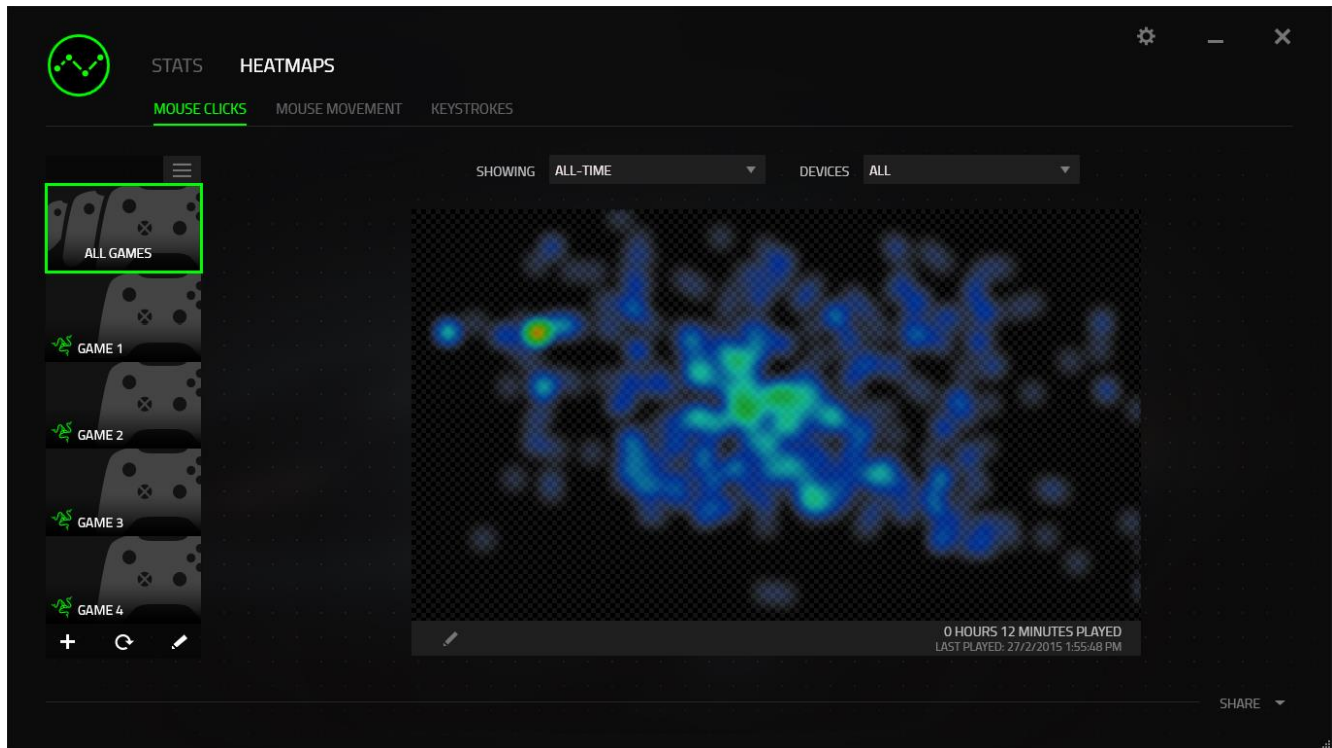
By default, the Stats Tab shows you the overall statistics of all your Razer devices for all games and all time. You can select a specific game via the game list on the left side, change the time period using the *SHOWING* dropdown menu, or the Razer device using the *DEVICES* dropdown menu.



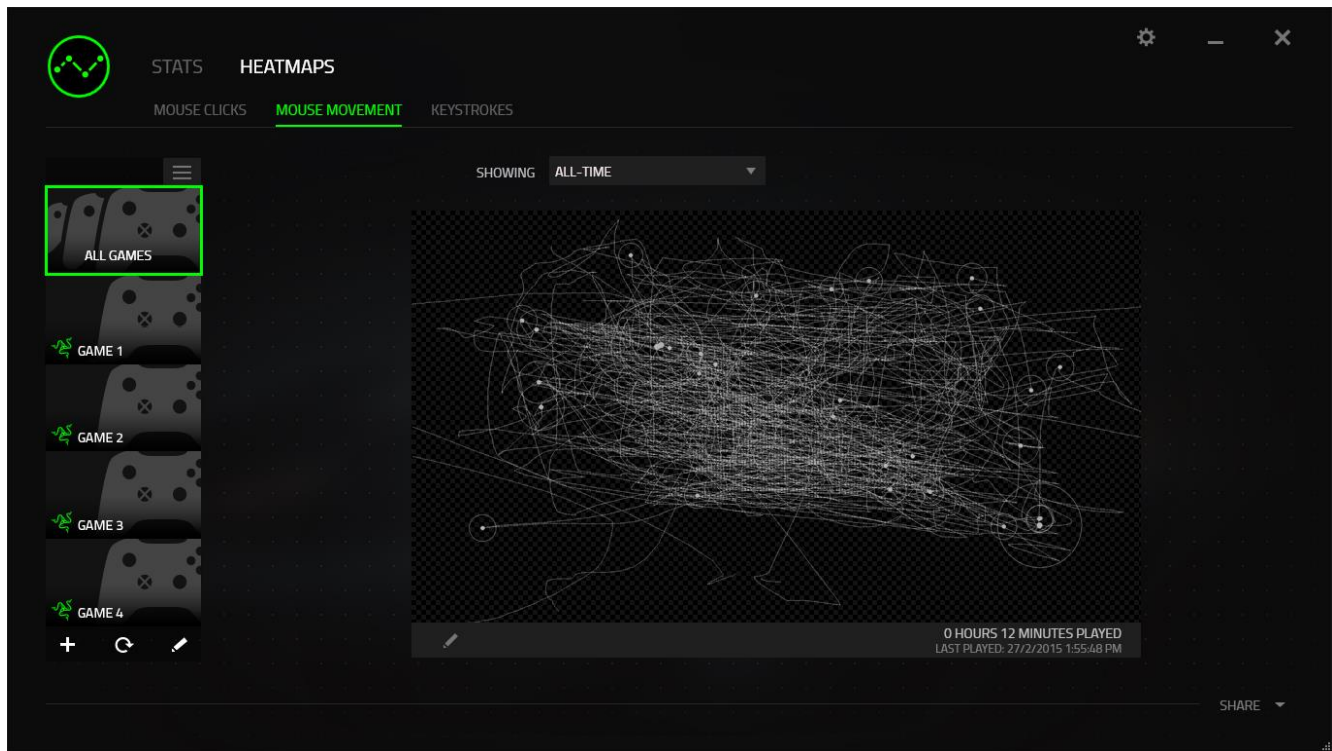
Heatmaps Tab

Heatmaps Tab shows detailed information about your Razer device's in-game usage. This includes:

- The **Mouse Clicks** tab, a heat map showing the frequency of mouse clicks on different spots of your screen.




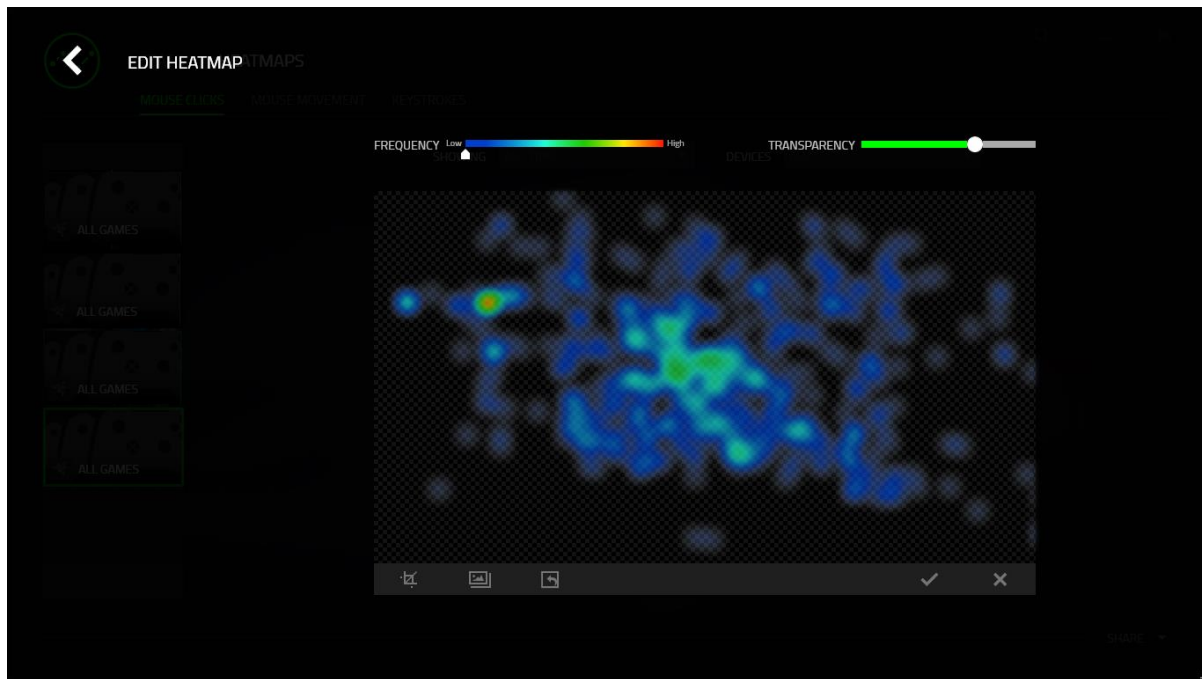
- The **Mouse Movement** tab which shows the movement of your mouse cursor during game play. This tab also displays the locations on screen where your mouse cursor stops in the form of white dots. The longer your cursor hovers at that spot, the larger the dot.





Mouse heatmaps can be overlaid on game screenshots.

Editing the Heatmap Image

Click  to change the background image and/or transparency of the heatmap overlay



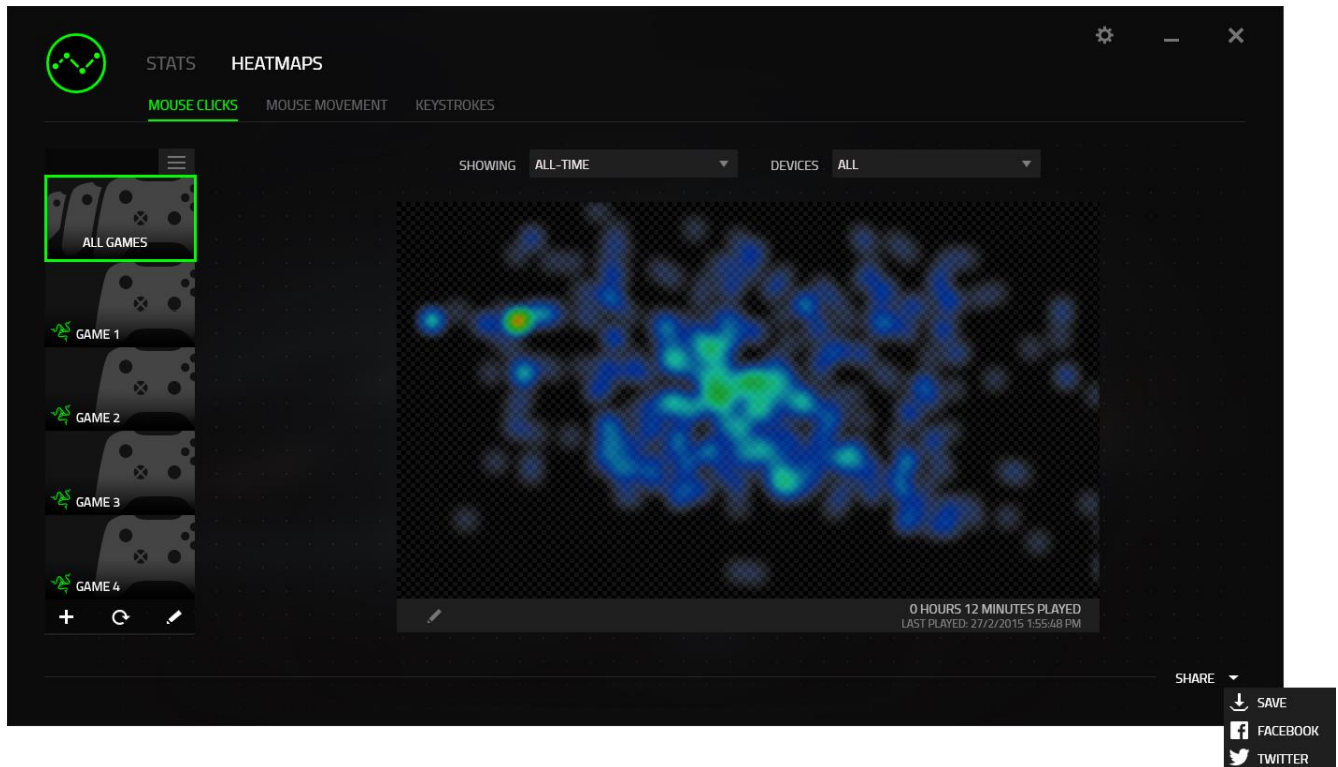
Here you can also adjust the transparency of the heatmap overlay on the background image

Click  to save the changes or  to exit without saving.


Social Media

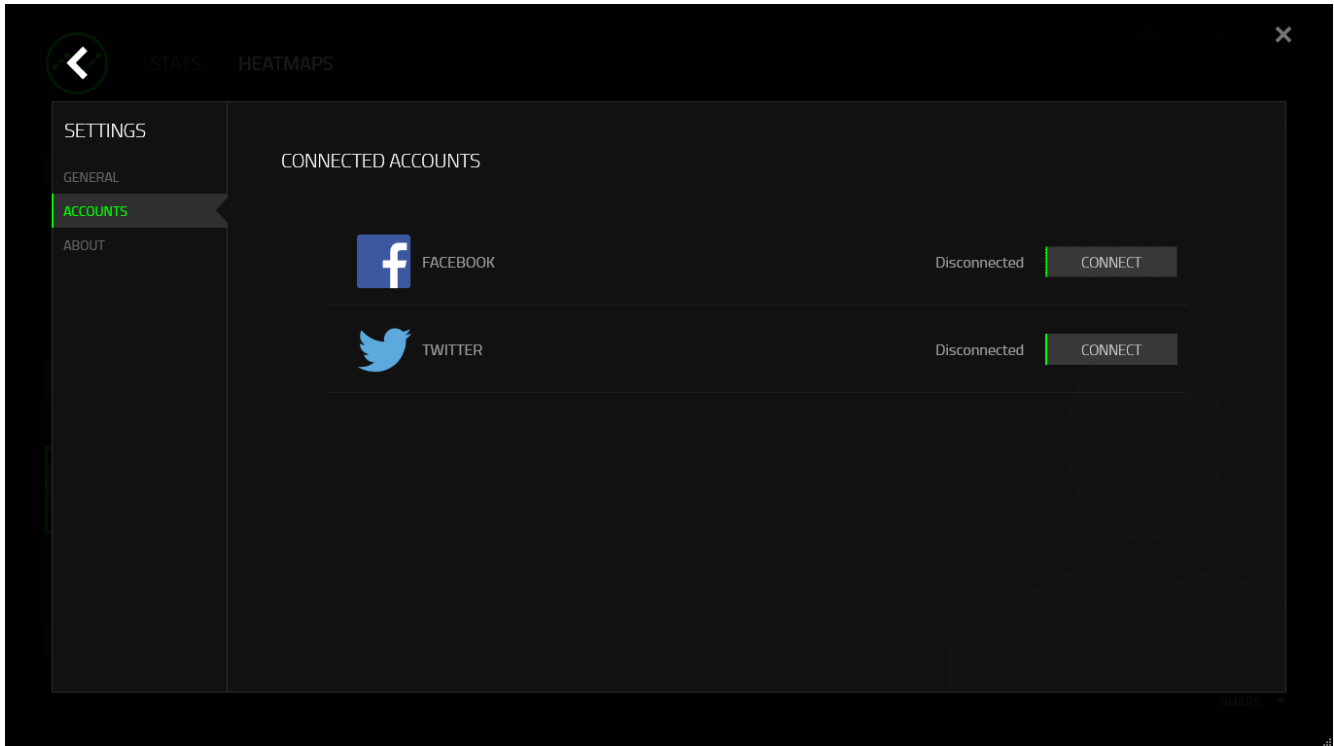
You can share your heatmap image on social media networks such as Facebook or Twitter directly from Razer Synapse.

From the **Heatmaps** tab, click the **Share** button on the bottom right of the screen. You will be prompted to login to the selected social media using an existing account if you have not already done so.



You can also login to your social media accounts first from the “SETTINGS” screen.

From the Stats & Heatmaps window, click . Select the “ACCOUNTS” tab. Click **CONNECT** next to the social media network you wish to sync with. Enter your login details and wait for the connection to complete.



8. SAFETY AND MAINTENANCE

SAFETY GUIDELINES

In order to achieve maximum safety while using your Razer Orochi, we suggest that you adopt the following guidelines:

1. Avoid looking directly at the tracking beam of your mouse or pointing the beam in anyone else's eye. Note that the tracking beam is NOT visible to the naked human eye and is set on an Always-On mode.
2. Should you have trouble operating the device properly and troubleshooting does not work, unplug the device and contact the Razer hotline or go to www.razersupport.com for support. Do not attempt to service or fix the device yourself at any time.
3. Do not take apart the device (doing so will void your warranty) and do not attempt to operate it under abnormal current loads.
4. Keep the device away from liquid, humidity or moisture. Operate the device only within the specific temperature range of 0°C (32°F) to 40°C (104°F). Should the temperature exceed this range, unplug and/or switch off the device in order to let the temperature stabilize to an optimal level.

COMFORT

Research has shown that long periods of repetitive motion, improper positioning of your computer peripherals, incorrect body position, and poor habits may be associated with physical discomfort and injury to nerves, tendons, and muscles. Below are some guidelines to avoid injury and ensure optimum comfort while using your Razer Orochi.

1. Position your keyboard and monitor directly in front of you with your mouse next to it. Place your elbows next to your side, not too far away and your mouse within easy reach.
2. Adjust the height of your chair and table so that the keyboard and mouse are at or below elbow height.

3. Keep your feet well supported, posture straight and your shoulders relaxed.
4. During gameplay, relax your wrist and keep it straight. If you do the same tasks with your hands repeatedly, try not to bend, extend or twist your hands for long periods.
5. Do not rest your wrists on hard surfaces for long periods. Use a wrist rest to support your wrist while gaming.
6. Customize the buttons on your mouse to suit your style of gaming in order to minimize repetitive or awkward motions while gaming.
7. Make sure that your mouse fits comfortably in your hands.
8. Do not sit in the same position all day. Get up, step away from your desk and do exercises to stretch your arms, shoulders, neck and legs.
9. If you should experience any physical discomfort while using your mouse, such as pain, numbness, or tingling in your hands, wrists, elbows, shoulders, neck or back, please consult a qualified medical doctor immediately.

MAINTENANCE AND USE

The Razer Orochi requires minimum maintenance to keep it in optimum condition. Once a month we recommend you unplug the device from the USB port and clean it using a soft cloth or cotton swab with a bit of warm water to prevent dirt buildup. Do not use soap or harsh cleaning agents.

To get the ultimate experience in movement and control, we highly recommend a premium Mouse Mat from Razer. Some surfaces will cause undue wear on the feet requiring constant care and eventual replacement.

Do note that the sensor of the Razer Orochi is ‘tuned’ or optimized especially for the Razer Mouse Mats. This means that the sensor has been tested extensively to confirm that the Razer Orochi reads and tracks best on Razer Mouse Mats.

9. LEGALESE

COPYRIGHT AND INTELLECTUAL PROPERTY INFORMATION

©2015 Razer Inc. All Rights Reserved. Razer™, the Razer Triple-Headed Snake logo, the Razer “distressed word” logo and other trademarks set out herein are owned or controlled by Razer Inc. and/or its affiliated companies, pending or registered in the United States and other countries.

Windows and the Windows logo are trademarks of the Microsoft group of companies.

Mac OS®, Mac® and the Mac logo® are trademarks or registered trademarks of Apple Inc.

Razer Inc. and its affiliate companies (“Razer”) may own or control copyright, trademarks, trade secrets, patents, patent applications, or other intellectual property rights (whether registered or unregistered) concerning the product in this guide. Furnishing of this guide does not give you a license to any such copyright, trademark, patent or other intellectual property right. The Razer Orochi (the “Product”) may differ from pictures whether on packaging or otherwise. Razer assumes no responsibility for such differences or for any errors that may appear. Information contained herein is subject to change without notice.

LIMITED PRODUCT WARRANTY

For the latest and current terms of the Limited Product Warranty, please visit www.razerzone.com/warranty.

LIMITATION OF LIABILITY

Razer shall in no event be liable for any lost profits, loss of information or data, special, incidental, indirect, punitive or consequential or incidental damages, arising in any way out of distribution of, sale of, resale of, use of, or inability to use the Product. In no event shall Razer’s liability exceed the retail purchase price of the Product.

COSTS OF PROCUREMENT

For the avoidance of doubt, in no event will Razer be liable for any costs of procurement unless it has been advised of the possibility of such damages, and in no case shall Razer be liable for any costs of procurement liability exceeding the retail purchase price of the Product.

GENERAL

These terms shall be governed by and construed under the laws of the jurisdiction in which the Product was purchased. If any term herein is held to be invalid or unenforceable, then such term (in so far as it is invalid or unenforceable) shall be given no effect and deemed to be excluded without invalidating any of the remaining terms. Razer reserves the right to amend any term at any time without notice.