



The Razer Ouroboros ambidextrous wireless gaming mouse is a potent weapon packed with enough lethal features to obliterate the competition.

Designed for gamers who prefer an ambidextrous design, it offers fully customizable ergonomics and fit for every hand size, big or small, by allowing adjustment of the arched palm rest and back. Two interchangeable side panels ensure you're using your preferred grip-style at all times. Game for hours on end while minimizing fatigue and maximizing comfort, as your enemies rage-quit from exhaustion.

The Razer Ouroboros features a highly advanced 8200dpi 4G laser sensor with a clutch trigger to temporarily reduce or increase the DPI as you game, letting you go from high sensitivity assault to low-sense sniper and back as and when you need. Other sensor customization features include cut-off to Z-axis tracking and surface calibration.

With this all-in-one ultimate gaming mouse, achieving victory is easy.

TABLE OF CONTENTS

1. PACKAGE CONTENTS / SYSTEM REQUIREMENTS.....	2
2. REGISTRATION / TECHNICAL SUPPORT.....	2
3. TECHNICAL SPECIFICATIONS.....	3
4. DEVICE LAYOUT.....	4
5. SETTING UP YOUR RAZER OUROBOROS	6
6. USING YOUR RAZER OUROBOROS.....	13
7. INSTALLING YOUR RAZER OUROBOROS	18
8. CONFIGURING YOUR RAZER OUROBOROS	19
9. SAFETY AND MAINTENANCE	43
10. LEGALESE.....	45

1. PACKAGE CONTENTS / SYSTEM REQUIREMENTS

PACKAGE CONTENTS

- Razer Ouroboros Elite Gaming Mouse
- 4 Interchangeable Side Panels
- Rechargeable NiMH AA Battery
- Charging Dock
- USB Connector Cable
- Quick Start Guide
- Master Guide
- Screwdriver (US model only)

SYSTEM REQUIREMENTS

- PC or Mac with a free USB 2.0 port
- Windows® 8 / Windows® 7 / Windows Vista® / Windows® XP (32-bit) / Mac OS X (10.6-10.8)
- Internet connection
- 100MB of free hard disk space

2. REGISTRATION / TECHNICAL SUPPORT

REGISTRATION

- Please visit www.razerzone.com/registration for online product registration.

TECHNICAL SUPPORT

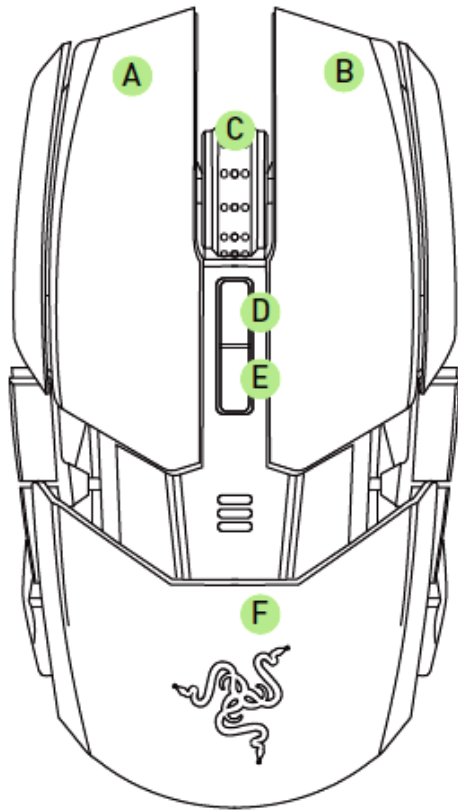
What you'll get:

- 2 years limited manufacturer's warranty.
- Free online technical support at www.razersupport.com.

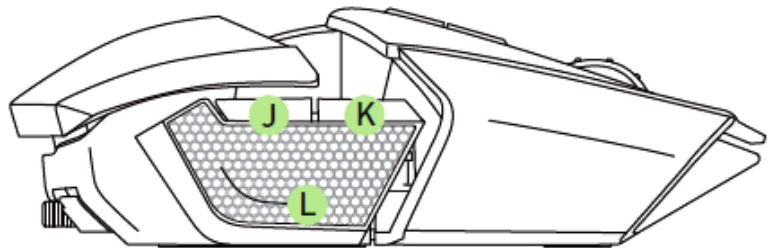
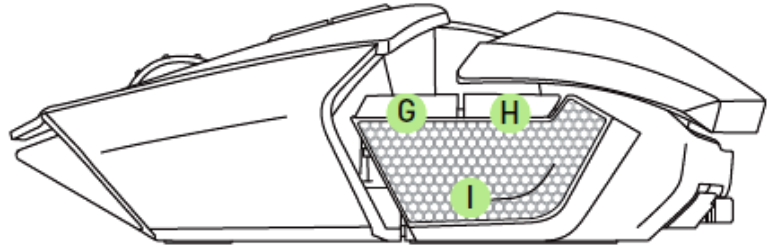
3. TECHNICAL SPECIFICATIONS

- Customizable ergonomics to fit all hand sizes and grip-styles
- 8200dpi 4G Laser Sensor
- Gaming-grade wireless technology with dock
- Razer Synapse 2.0 enabled
- 11 programmable Hyperresponse buttons
- 1000Hz Ultrapolling
- Up to 200 inches per second / 50g acceleration
- Approximate size: 122mm - 134mm/ 4.80"- 5.39" (Length) x 71mm / 2.80" (Width) x 42mm / 1.65" (Height)
- Approximate Weight: 147g/0.32lbs
- Battery life: (Approx) 12 hrs (continuous gaming)

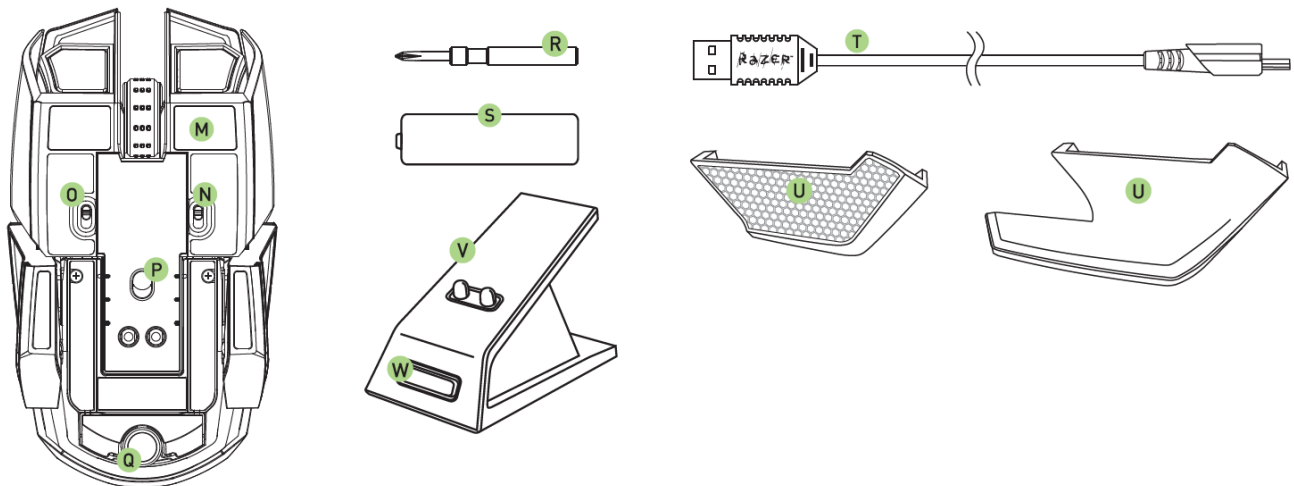
4. DEVICE LAYOUT



- A. Left Mouse Button
- B. Right Mouse Button
- C. Scroll Wheel
- D. Sensitivity Stage Up
- E. Sensitivity Stage Down
- F. Adjustable Palm Rest and Rear Panel



- G. Mouse Button 7
- H. Mouse Button 6
- I. Left Trigger
- J. Mouse Button 9
- K. Mouse Button 10
- L. Right Trigger



M. UltraSlick Mouse Feet

N. Left Trigger Switch

O. Right Trigger Switch

P. 8200dpi 4G Laser Sensor

Q. Recliner Wheel*

R. Screwdriver (US model only)

S. Rechargeable NiMH AA Battery

T. USB Connector Cable

U. Interchangeable Side Panels

- Finger Rest Panel
- Finger Grip Panel

V. Charging Dock

W. Pairing Button

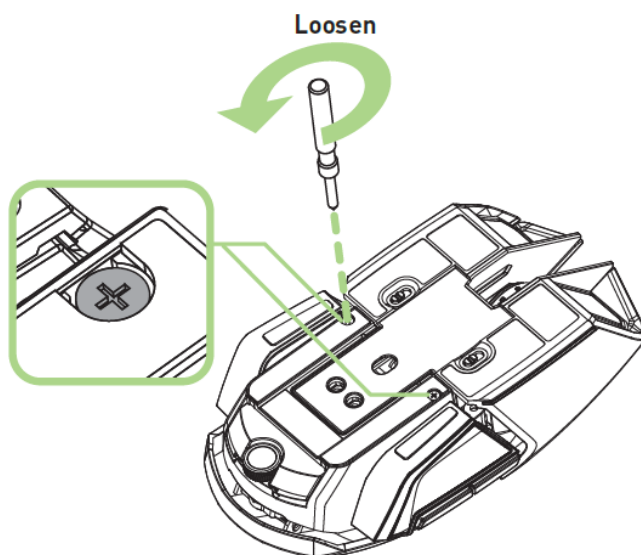
*For non-US model, this area is also a Rear Panel adjustment button

5. SETTING UP YOUR RAZER OUROBOROS

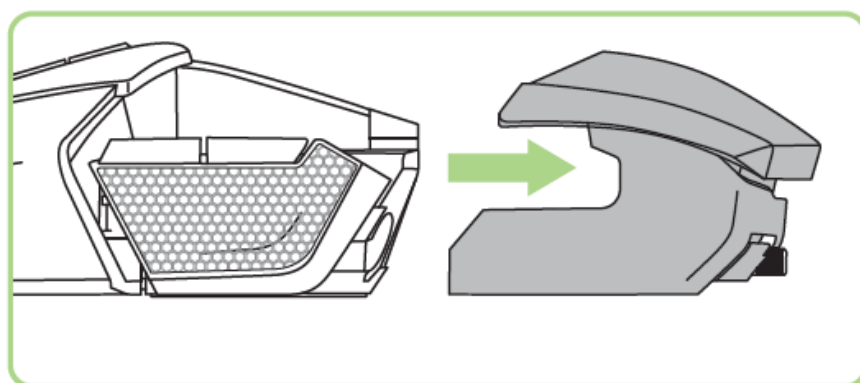
INSERTING THE BATTERY – US MODEL ONLY

1. With the mouse flipped over, turn each screw counter-clockwise.

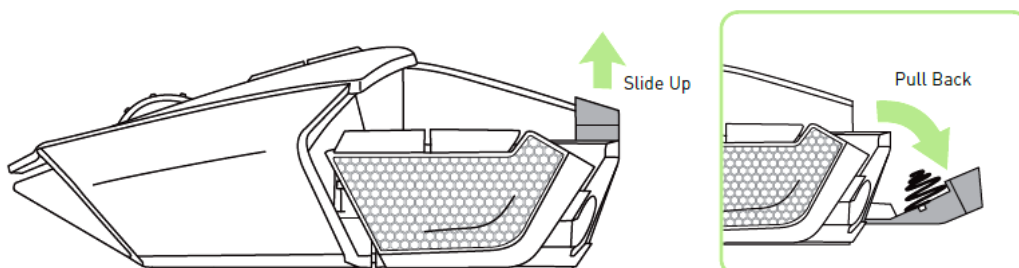
CAUTION: The screws are not removable and over-tightening them can cause damage to the device.



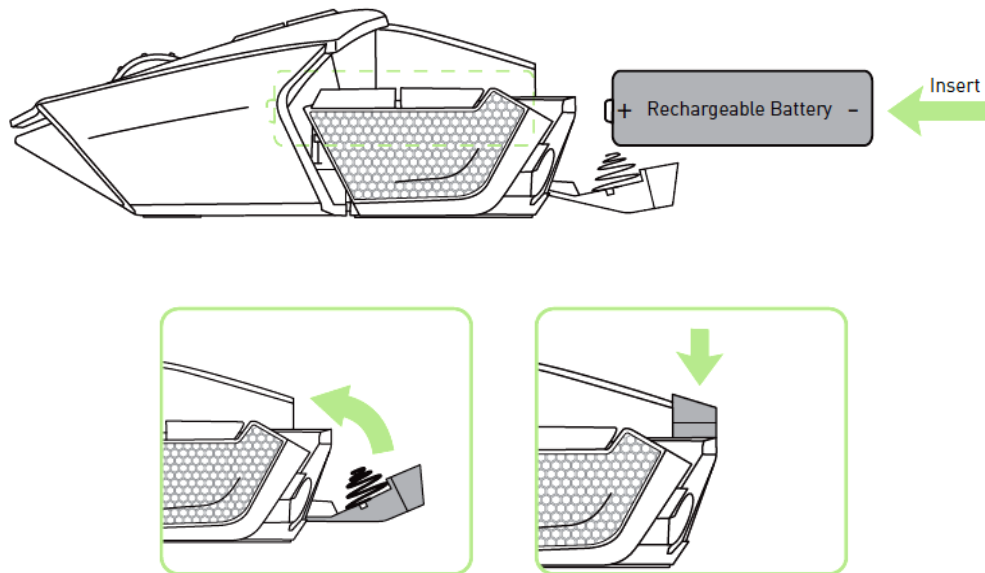
2. Pull the rear panel to remove it.



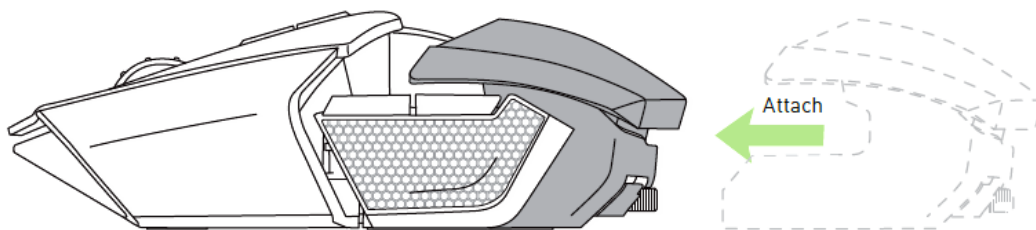
3. Slide the battery cover up then pull it back to open.



4. Insert the battery into the compartment then close the battery cover.

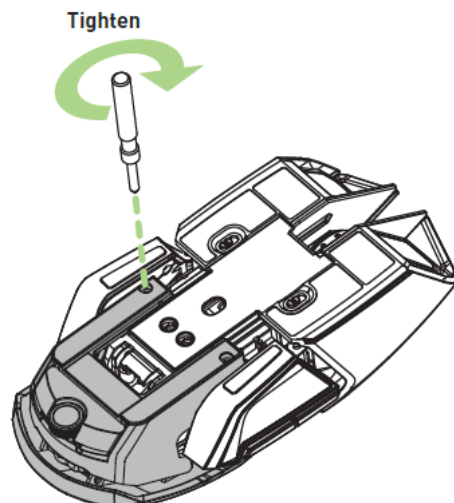


5. Reattach the rear panel onto the mouse.



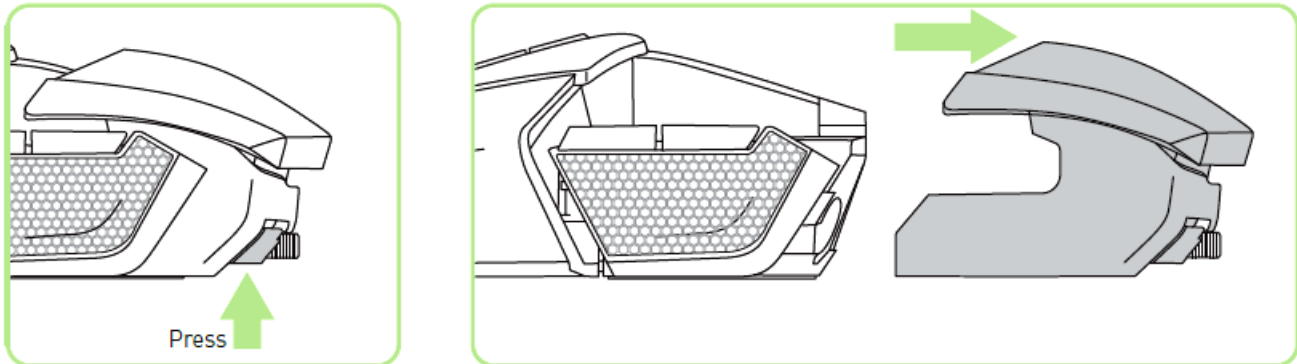
6. Turn each screw clockwise to lock them into position

CAUTION: The screws are not removable and over-tightening them can cause damage to the device.

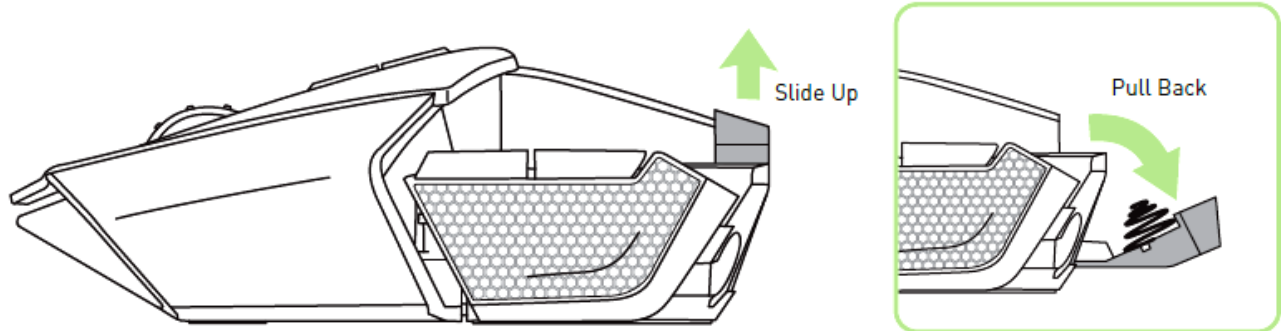


INSERTING THE BATTERY – NON-US MODEL ONLY

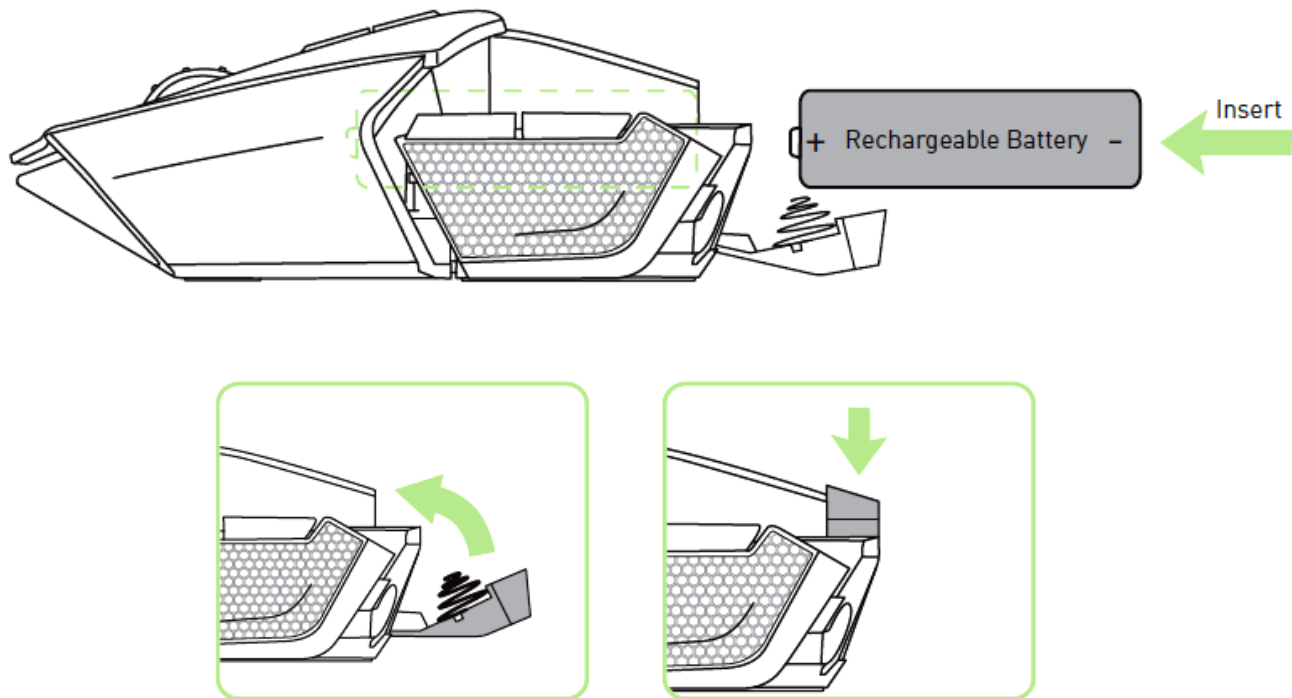
1. Press the Rear Panel adjustment button and detach the rear panel.



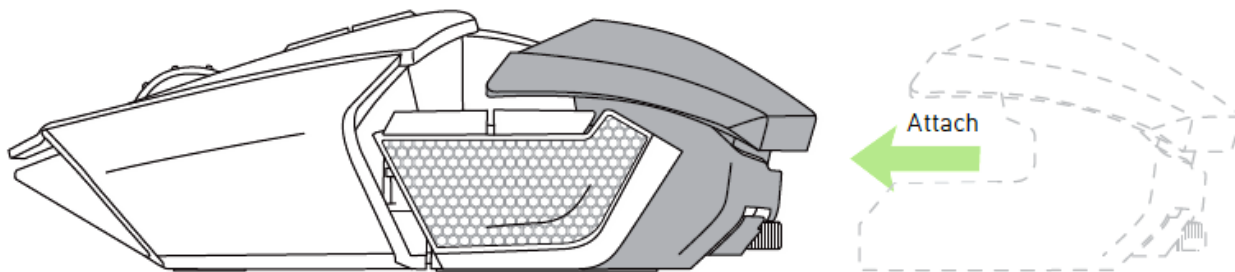
2. Slide the battery cover up then pull it back to open.



3. Insert the battery into the compartment then close the battery cover.



4. Reattach the rear panel onto the mouse.



CHARGING YOUR RAZER OUROBOROS



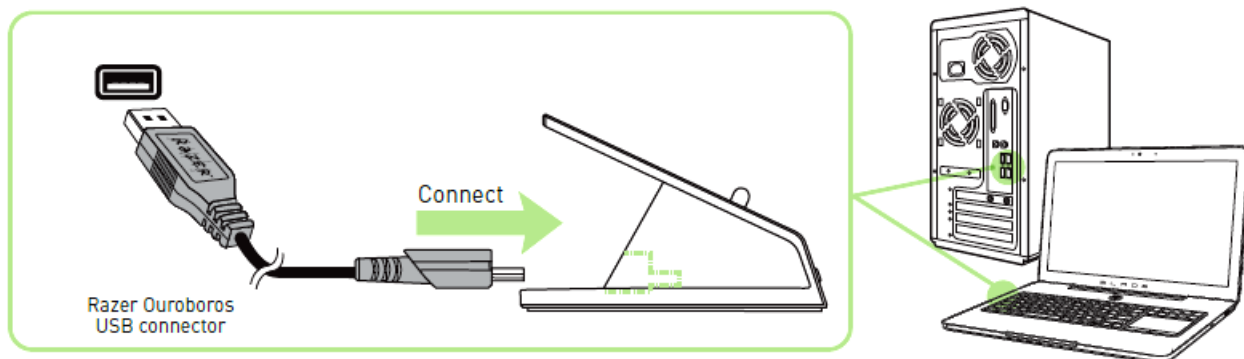
For best results, please charge the battery for 8 hours before using the Razer Ouroboros for the first time. A completely depleted battery can charge up to 90% in approximately 4 hours and up to 100% in another 4 hours.

The Razer Ouroboros requires a USB connection that is able to supply sufficient power during battery charging process. The battery charging process of the Razer Ouroboros may be affected if connected to a non-powered USB hub or non-powered USB ports found on certain keyboards and other peripherals.

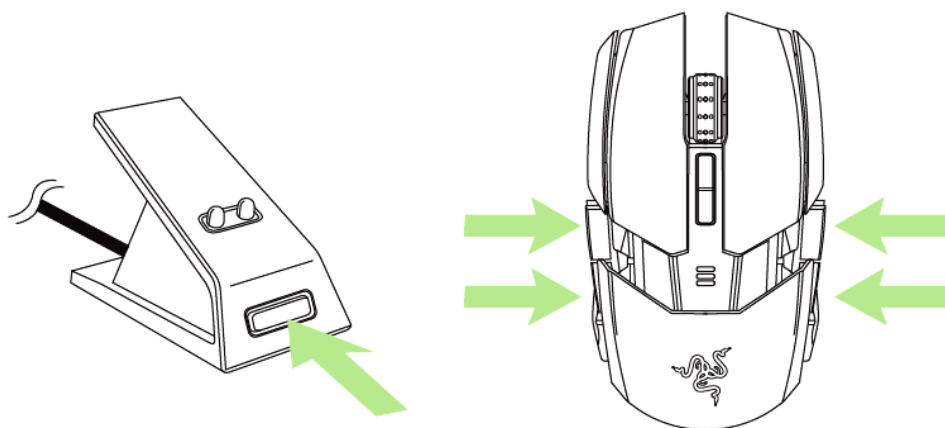
When not using your Razer Ouroboros' battery for more than 30 days, be sure to remove and store the battery in a fully charged state. For extended periods of inactivity we recommend removing the charged battery from the mouse. This will prevent damage to the battery due to an overly discharged state. If the mouse has not been used for more than 30 days, the battery might need to be recharged before usage.

WIRELESS MODE

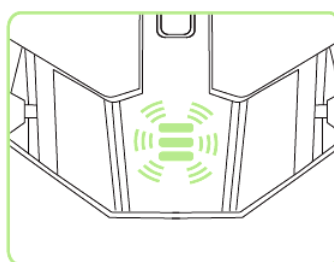
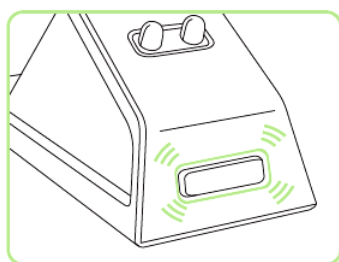
1. Connect the USB Connector Cable to the Charging Dock and to your computer.



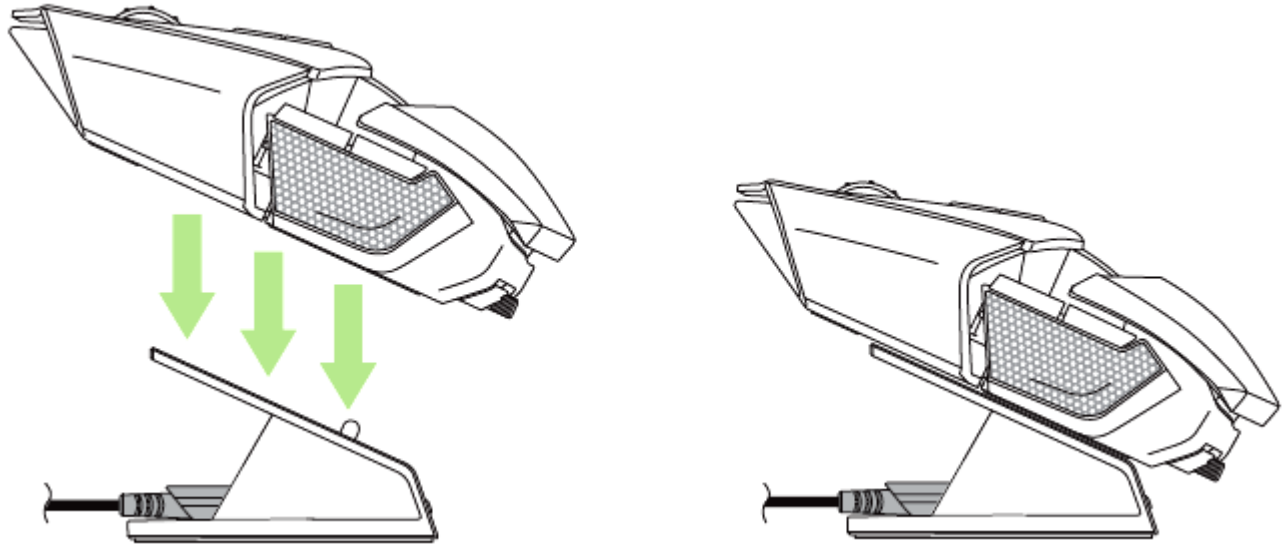
2. Press the pairing button and hold side mouse buttons 6, 7, 9 and 10 simultaneously.



3. The lights on the mouse and Charging Dock will start flashing to indicate the pairing process. The mouse is ready for use when the lights on the mouse and the Charging Dock have stopped blinking.

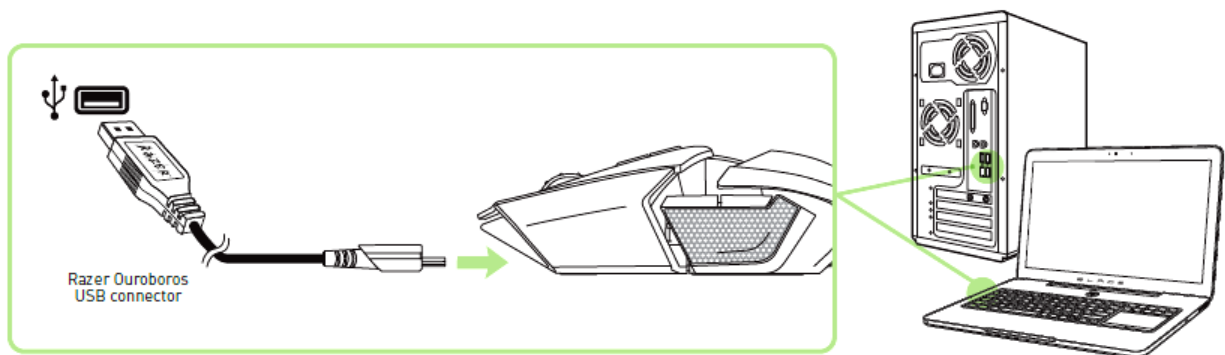


4. To charge the mouse in wireless mode, simply place the device on the Charging Dock.



WIRED/CHARGING MODE

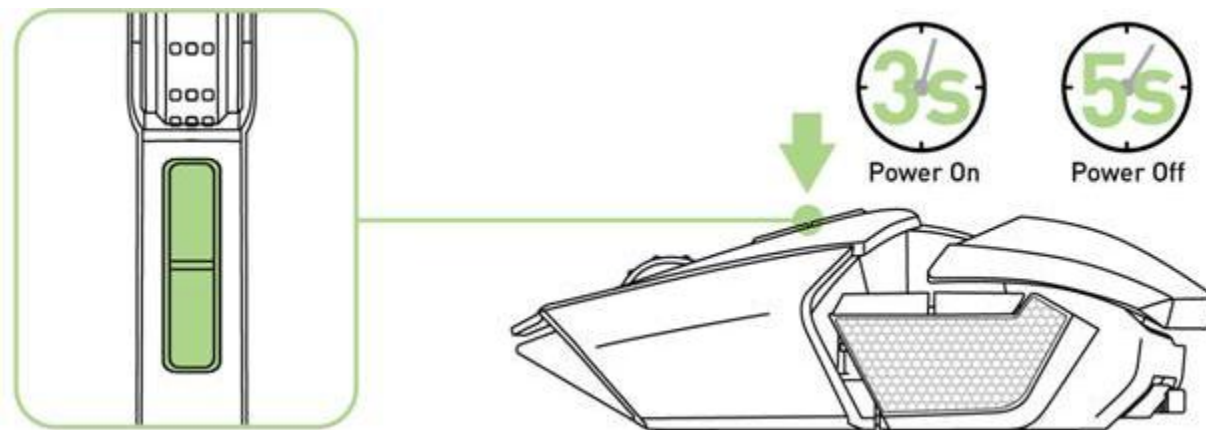
Connect the USB Connector Cable to the mouse and to your computer.



The mouse should now be ready for use and the battery will automatically start recharging.

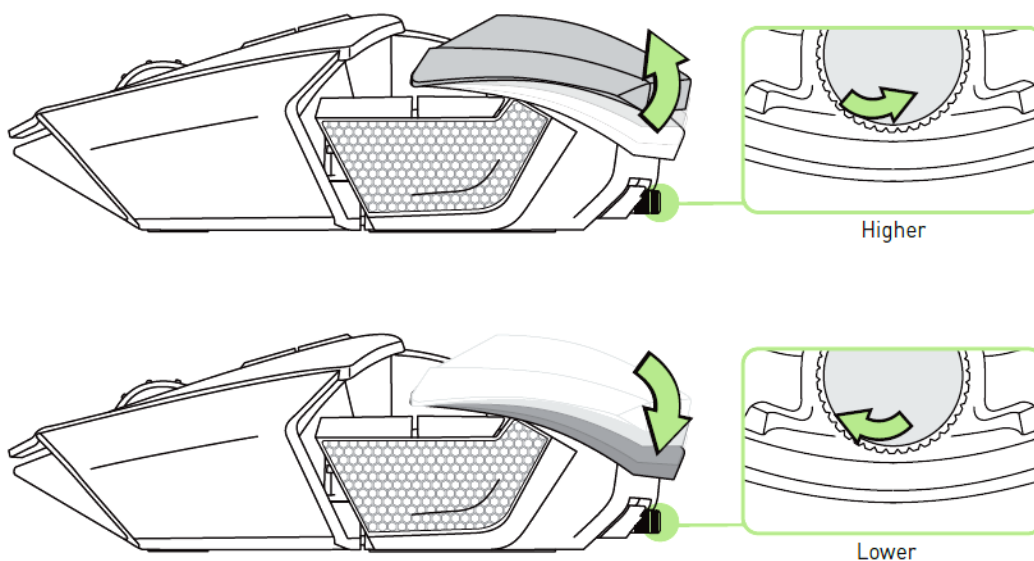
6. USING YOUR RAZER OUROBOROS

Press and hold these buttons together for 3 seconds to turn On or 5 seconds to turn OFF.



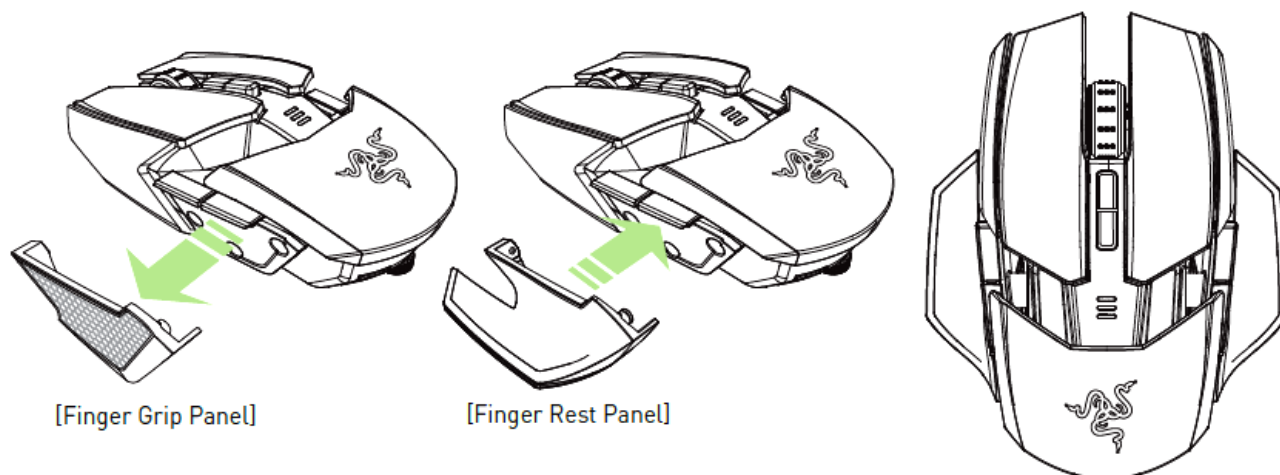
ADJUSTING THE PALM REST

Use the Recliner Wheel to tilt the palm rest higher / lower. Rotate the wheel counterclockwise to lower the palm rest. Rotate the wheel clockwise to raise the palm rest.



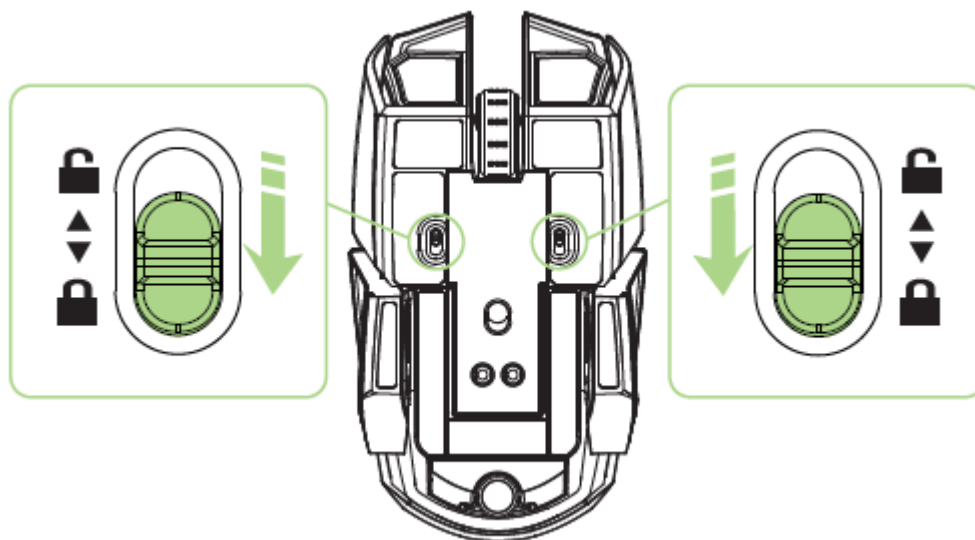
CHANGING THE SIDE PANELS

Carefully remove and attach the interchangeable side panels using the magnetic holes as a guide.



DISABLING THE SIDE TRIGGERS

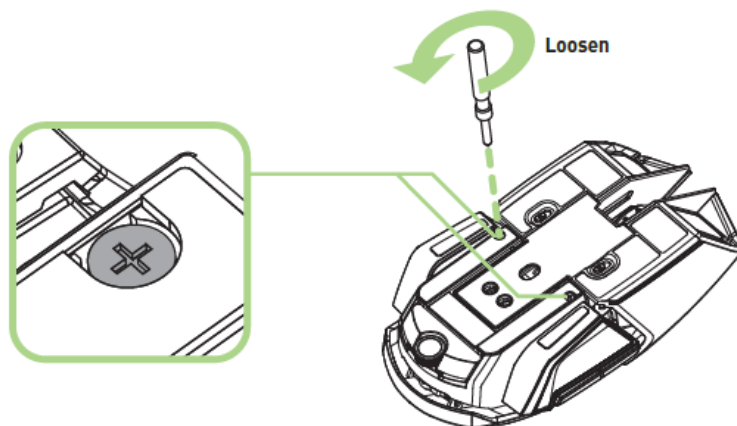
Manually lock the side triggers by moving their corresponding switches downwards.



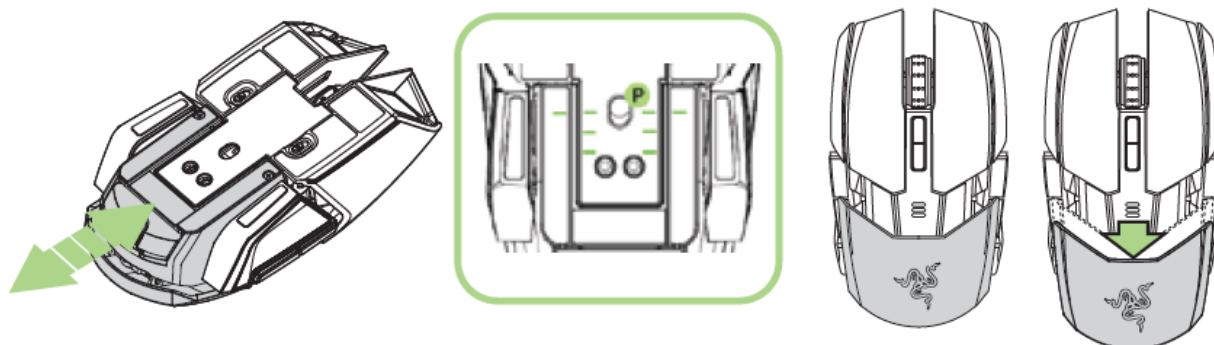
EXTENDING THE REAR PANEL – US MODEL ONLY

1. With the mouse flipped over, turn each screw counter-clockwise.

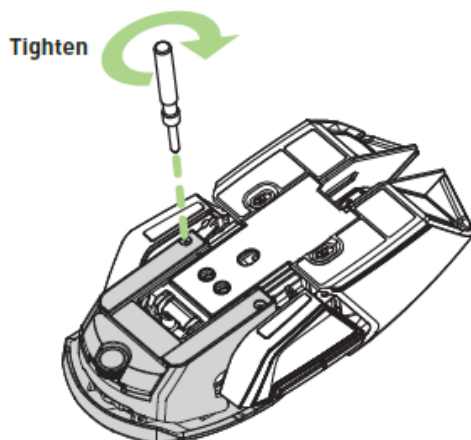
CAUTION: The screws are not removable and over-tightening them can cause damage to the device.



2. Set your desired length using the guide underneath the mouse.

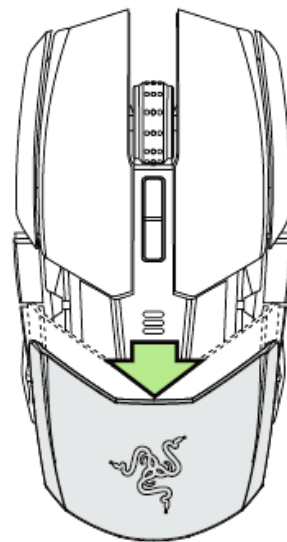
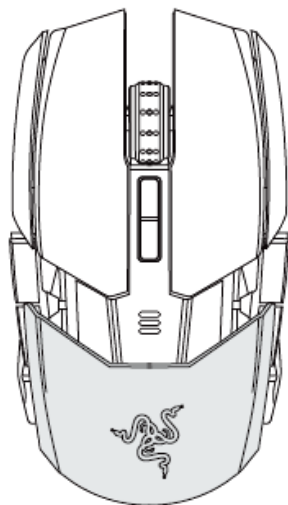
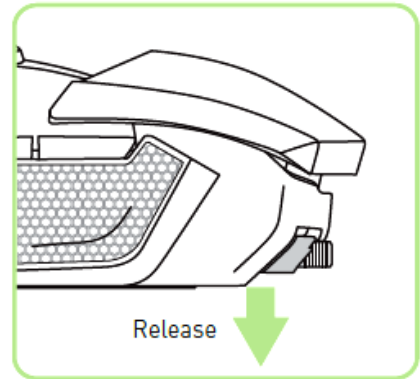
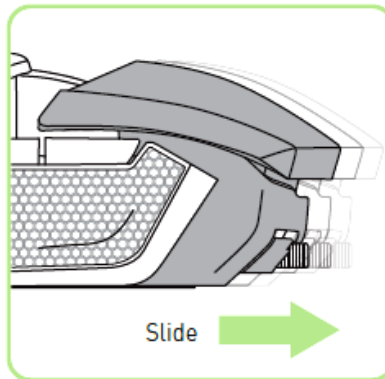
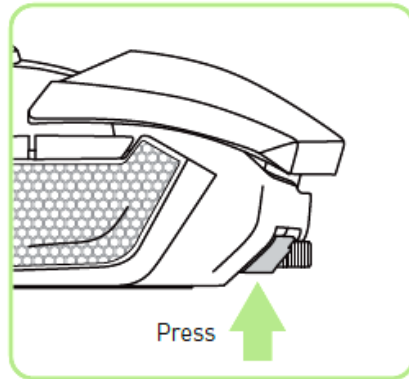


3. Turn each screw clockwise to lock them into position.

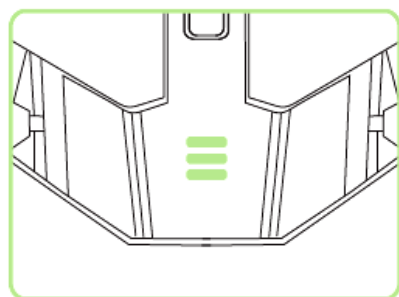


EXTENDING THE REAR PANEL – NON-US MODEL ONLY

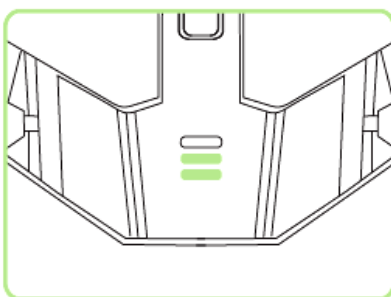
1. Press and hold the Rear Panel adjustment button to unlock.
2. Slide the rear panel horizontally to adjust.
3. Release the Rear Panel adjustment button to lock the panel into position.



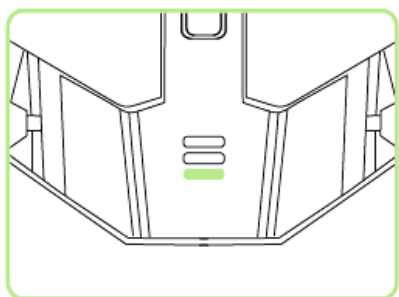
BATTERY LIFE INDICATOR BEHAVIOR



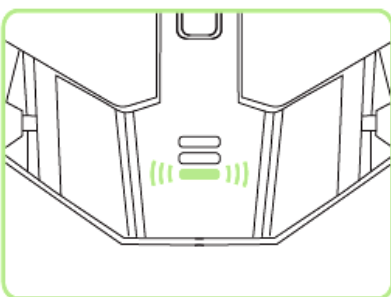
100% Battery
3 green lit LEDs



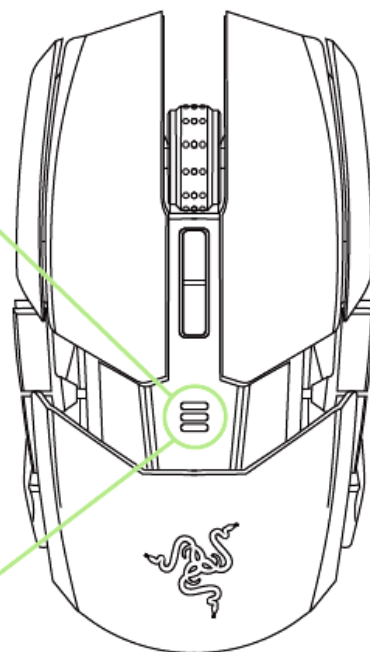
70% Battery
2 green lit LEDs



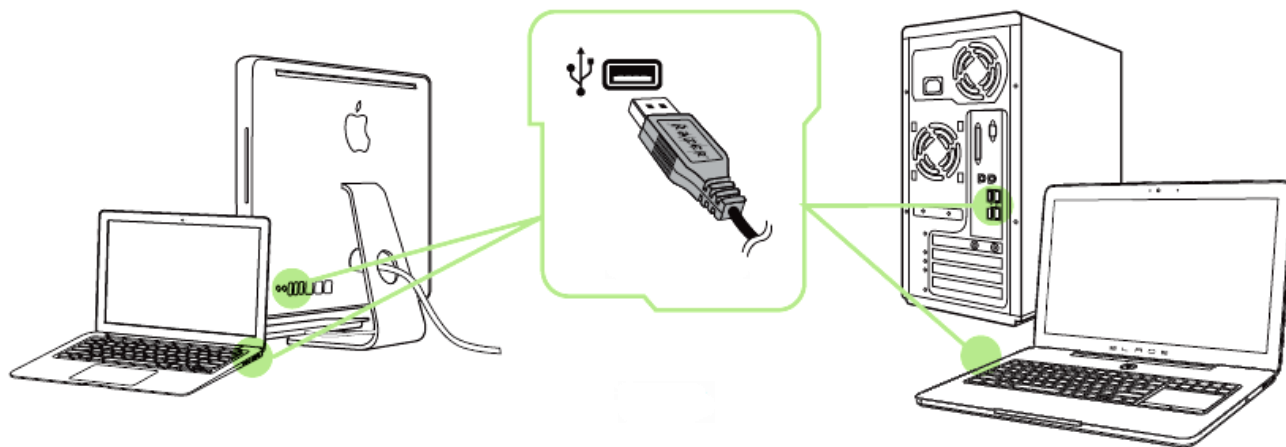
30% Battery
1 green lit LED



5% Battery
1 green blinking LED



7. INSTALLING YOUR RAZER OUROBOROS



Note: You may skip Steps 2-4 if you already have Razer Synapse 2.0 installed with an existing account.

Step 1: Plug the Razer Ouroboros into the USB port of your computer.

Step 2: Download the Razer Synapse 2.0 installer from www.razerzone.com/synapse2.

Step 3: Run the installer and follow the onscreen instructions.

Step 4: Register for a Razer Synapse 2.0 account and confirm your new account.

Step 5: Open Razer Synapse 2.0 and log in to your account.

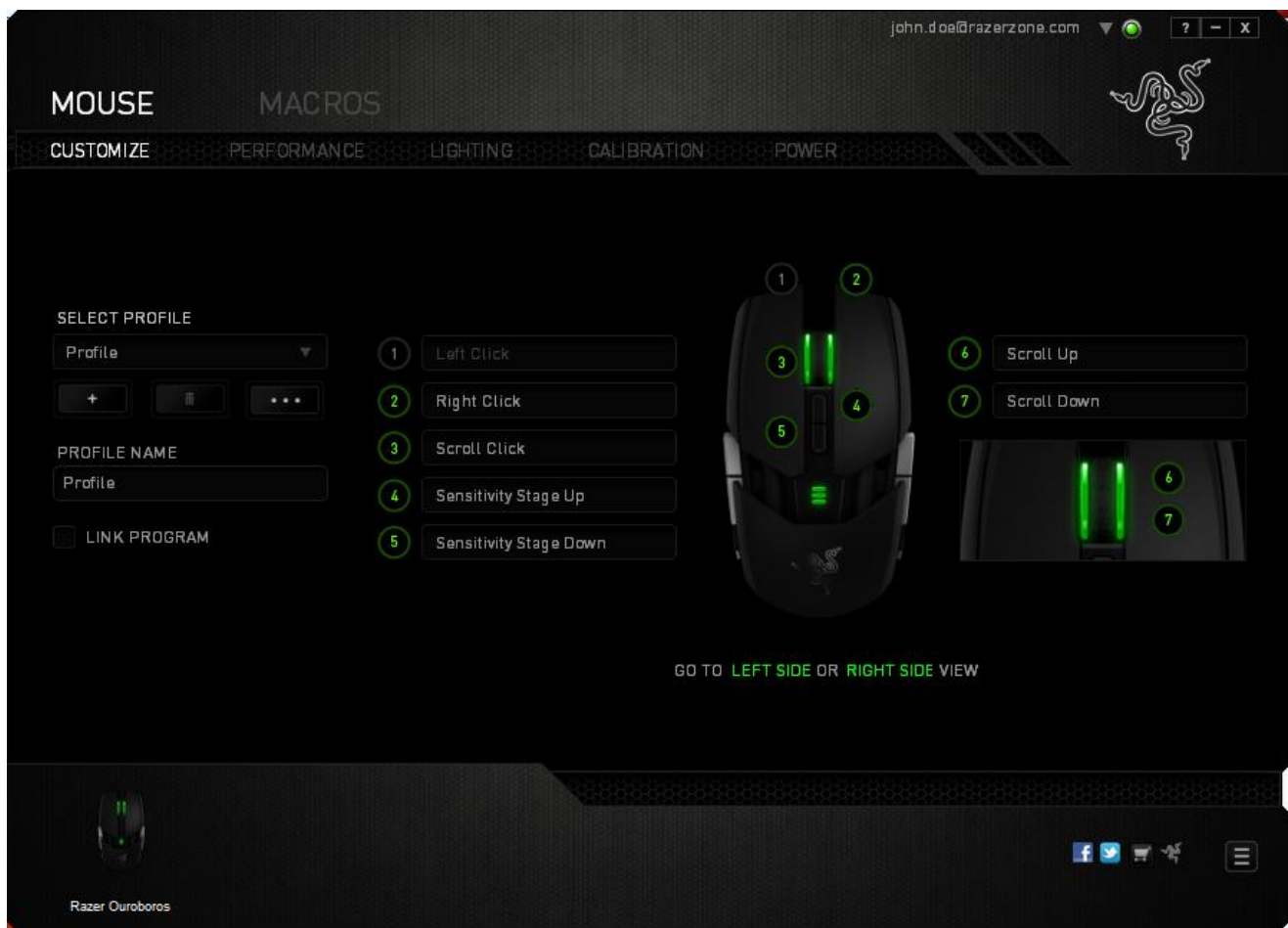
Step 6: Wait until the software automatically downloads and installs.

8. CONFIGURING YOUR RAZER OUROBOROS

Disclaimer: The features listed here require you to log in to Razer Synapse 2.0. These features are also subject to change based on the current software version and your Operating System.

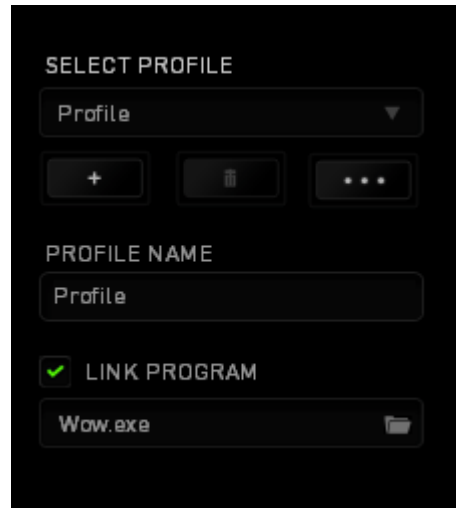
MOUSE TAB




The Mouse Tab is your default tab when you first install Razer Synapse 2.0. This tab allows you to customize your device's profiles, button assignments, performance and lighting.



Profile

A profile is a convenient way of organizing all your custom settings and you can have an infinite number of profiles at your disposal. Any changes made within each tab are automatically saved to the current profile and stored into the cloud servers.



You can create a new profile by clicking the  button or delete the current profile by clicking the  button. The  button allows you to Copy, Import, and Export profiles.

Your current profile by default is named “*Profile*” however; you can rename it by typing on the text field below *PROFILE NAME*.

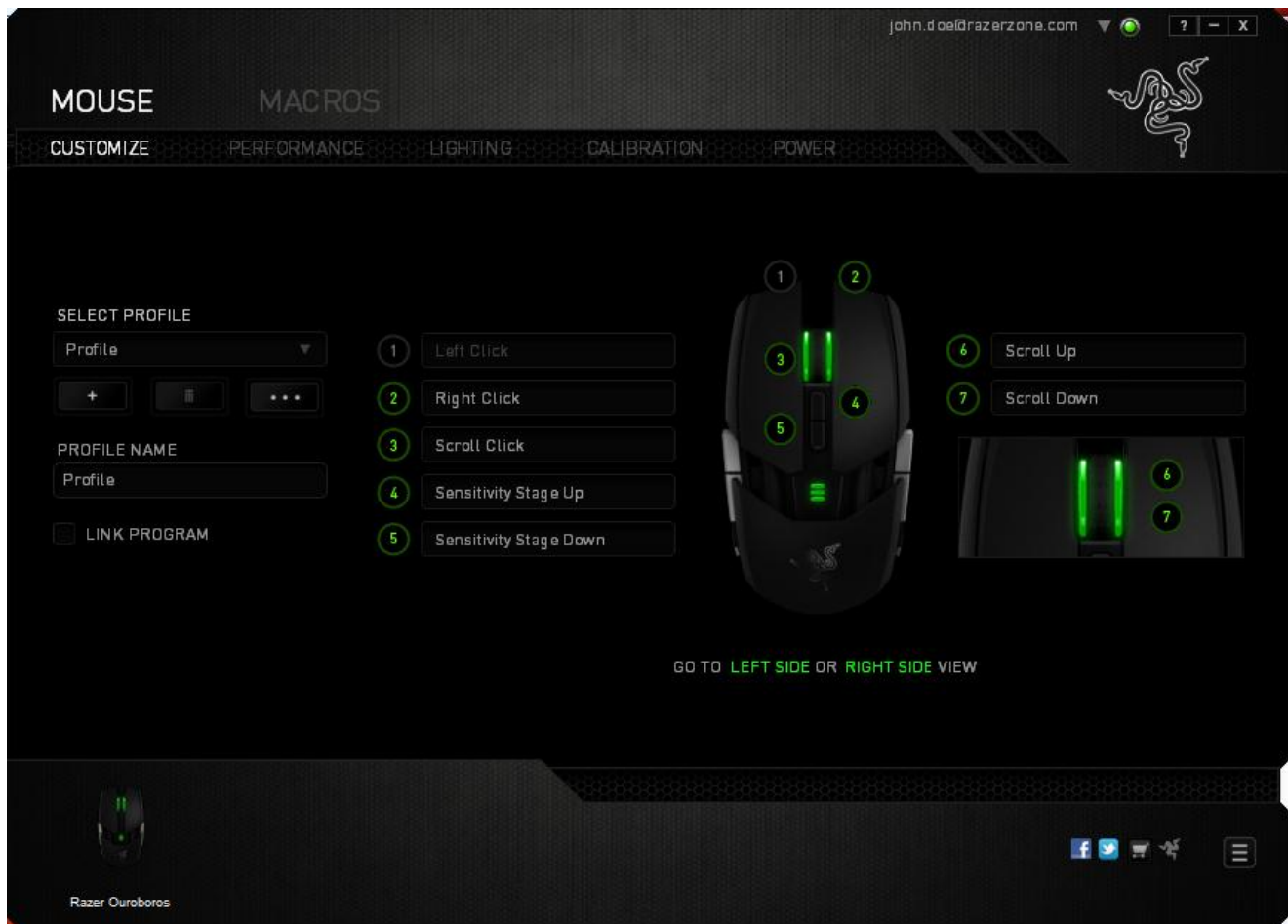
Each profile can be set to *FN + 0 - 9* using the *SHORTCUT* dropdown menu for fast profile switching. Each profile can also be set to automatically activate when you run a program or application through the use of the *LINK PROGRAM* option.

CUSTOMIZE TAB

The Customize Tab is where you can modify the basic functionalities of your device such as button assignments to suit your gaming needs. The changes made in this tab are automatically saved to your current profile.

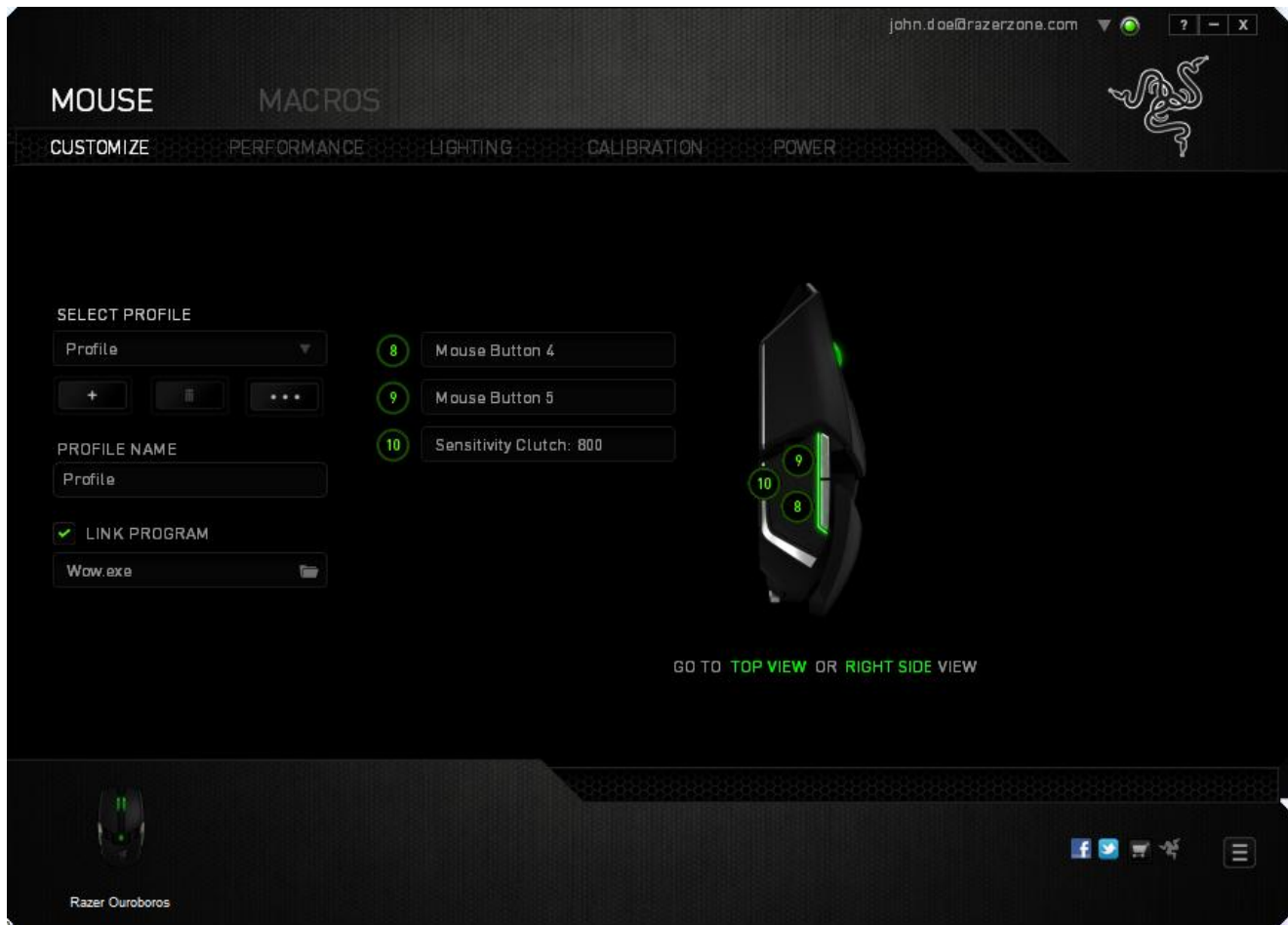
Top View

The Top View is where you can customize the 5 basic mouse buttons and the mouse wheel.



Left Side / Right Side View

The two views allow you to customize the side buttons of your mouse.



BUTTON ASSIGNMENT MENU

Initially, each of the mouse buttons is set to *DEFAULT*. However, you may change the function of these buttons by clicking the desired button to access the **BUTTON ASSIGNMENT** Menu.



Listed below are the customization options and their descriptions.



Default

This option enables you to return the key to its original function. To choose the *DEFAULT*, simply select it from the **BUTTON ASSIGNMENT** Menu.



Keyboard Function

This option enables you to change the mouse buttons into keyboard functions. To choose a keyboard function, select *KEYBOARD FUNCTION* from the **BUTTON ASSIGNMENT** Menu and enter the key you wish to use on the given field below. You may also include modifier keys such as *Ctrl*, *Shift*, *Alt* or any of these combinations.



Mouse Function

This option allows you to change the mouse buttons into other mouse functions. To choose a mouse function, select *MOUSE FUNCTION* from the **BUTTON ASSIGNMENT** Menu and an *ASSIGN BUTTON* submenu will appear.

Listed below are the functions which you can choose from the Assign Button submenu:

Left Click	- Performs a left mouse click using the assigned button.
Right Click	- Performs a right mouse click using the assigned button.
Scroll Click	- Activates the universal scrolling function.
Double Click	- Performs a double left click using the assigned button.
Mouse Button 4	- Performs a “Backward” command for most internet browsers.
Mouse Button 5	- Performs a “Forward” command for most internet browsers.
Scroll Up	- Performs a “Scroll Up” command using the assigned button.
Scroll Down	- Performs a “Scroll Down” command using the assigned button.



Sensitivity

Sensitivity refers to how fast the mouse pointer can travel across the screen. When you select the Sensitivity function from the BUTTON ASSIGNMENT Menu, a sub-menu will appear which gives you access to the following options:

- | | |
|-------------------------------|---|
| Sensitivity Clutch | - Change to a predefined sensitivity as long as the designated button is pressed. Releasing the button will return it to the previous sensitivity. |
| Sensitivity Stage Up | - Increase the current sensitivity by one stage. See the PERFORMANCE TAB to learn more about sensitivity stages. |
| Sensitivity Stage Down | - Decrease the current sensitivity by one stage. See the PERFORMANCE TAB to learn more about sensitivity stages. |
| On-The-Fly Sensitivity | - Readily adjust the current sensitivity using the assigned button. If On-The-Fly Sensitivity has been set, pressing the designated button and moving the scroll wheel will produce a bar on your screen which would indicate your current sensitivity level. |
| Cycle Up Sensitivity Stages | - Increase the current sensitivity stage by one and once it reaches the highest sensitivity stage, it will return to stage 1 when the button is pressed again. See the PERFORMANCE TAB to learn more about sensitivity stages. |
| Cycle Down Sensitivity Stages | - Decrease the current sensitivity stage by one and once it reaches stage 1, it will return to the highest sensitivity stage when the button is pressed again. See the PERFORMANCE TAB to learn more about sensitivity stages. |



Inter-device

Inter-device allows you to change the functionality of other Razer Synapse 2.0-enabled devices. Some of these functionalities are device-specific such as using your Razer gaming keyboard to change the Sensitivity Stage of your Razer gaming mouse. When you select Inter-device from the Button Assignment Menu, a sub-menu will appear.

DEVICE TO LINK allows you to choose which currently connected Razer device can be linked while FUNCTION allows you to choose which functionality you want to use for the linked device.



Macro

A Macro is a prerecorded sequence of keystrokes and button presses that is executed with precise timing. By assigning a Macro to a button, you can execute complex combinations with ease. The *ASSIGN MACRO* allows you to choose which recorded Macro to use while the *PLAYBACK OPTION* enables you to choose the behavior of the Macro. See the **MACROS TAB** to learn more about creating Macro commands.




Switch Profile

The Switch Profile enables you to change profiles on the fly and immediately load all your pre-configured settings. When you select Switch Profile from the BUTTON ASSIGNMENT Menu, a sub-menu will appear that will allow you to choose which profile to use. An on-screen display will automatically appear whenever you switch profiles.



Launch Program

The Launch Program allows you to run a program using the assigned button. When you select Launch Program from the BUTTON ASSIGNMENT Menu, a  button will appear which allows you to search for the specific program you want to use.



Multimedia Function

This option allows you to bind multimedia playback controls to your device. After selecting Multimedia Function, a submenu will appear. Listed below are the multimedia playback controls you can choose from the submenu:

Volume Down	- Decreases the audio output.
Volume Up	- Increases the audio output.
Mute Volume	- Mutes the audio.
Mic Volume Up	- Increases the microphone volume.
Mic Volume Down	- Decreases the microphone volume.
Mute Mic	- Mutes the microphone.
Mute All	- Mute both microphone and audio output.
Play / Pause	- Play, pause, or resume playback of the current media.
Previous Track	- Play the previous track.
Next Track	- Play the next track.

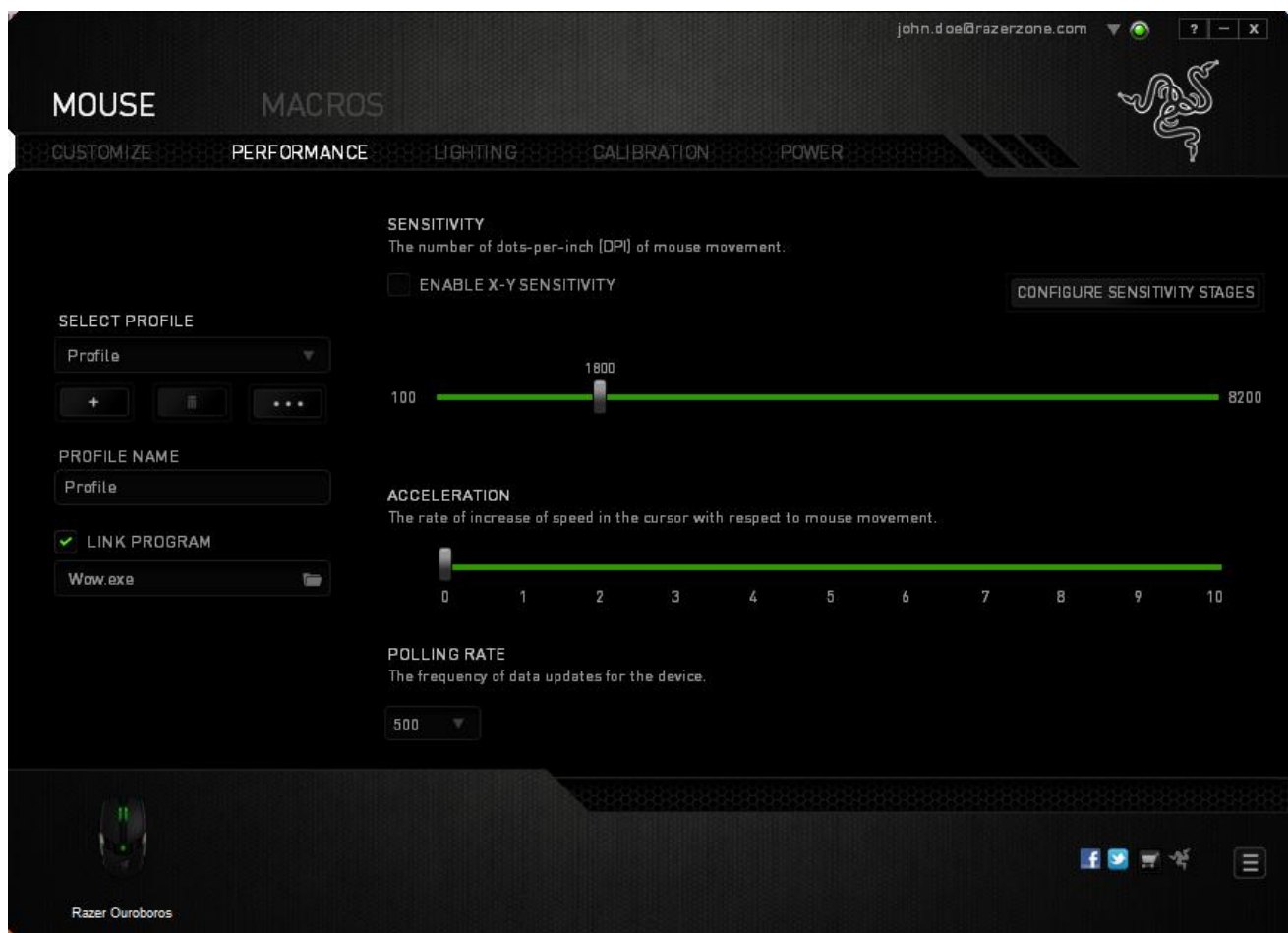


Disable

This option renders the assigned button unusable. Use Disable when you have no need for a button or if a particular button interferes with your gaming.

PERFORMANCE TAB

The Performance Tab allows you to enhance the speed and precision of your mouse pointer. Similar to the Customize Tab, the changes made here are automatically saved to your current profile.



Listed below are the performance options and their descriptions.

Sensitivity

Sensitivity pertains to how much effort is needed to move the mouse pointer in any direction. The higher the sensitivity, the more responsive the mouse will be. (Recommended setting: 1600 – 1800)

Enable X-Y Sensitivity

By default, the X-axis (horizontal) and Y-axis (vertical) use the same sensitivity values. However, you may set different sensitivity values to each of the axes by selecting the *ENABLE X-Y SENSITIVITY* option.

Configure Sensitivity Stages

A sensitivity stage is a preset sensitivity value. You can create up to 5 different sensitivity stages which you can cycle through using the sensitivity stage up/down buttons. You may use the *ENABLE X-Y SENSITIVITY* concurrently with this option.

Acceleration

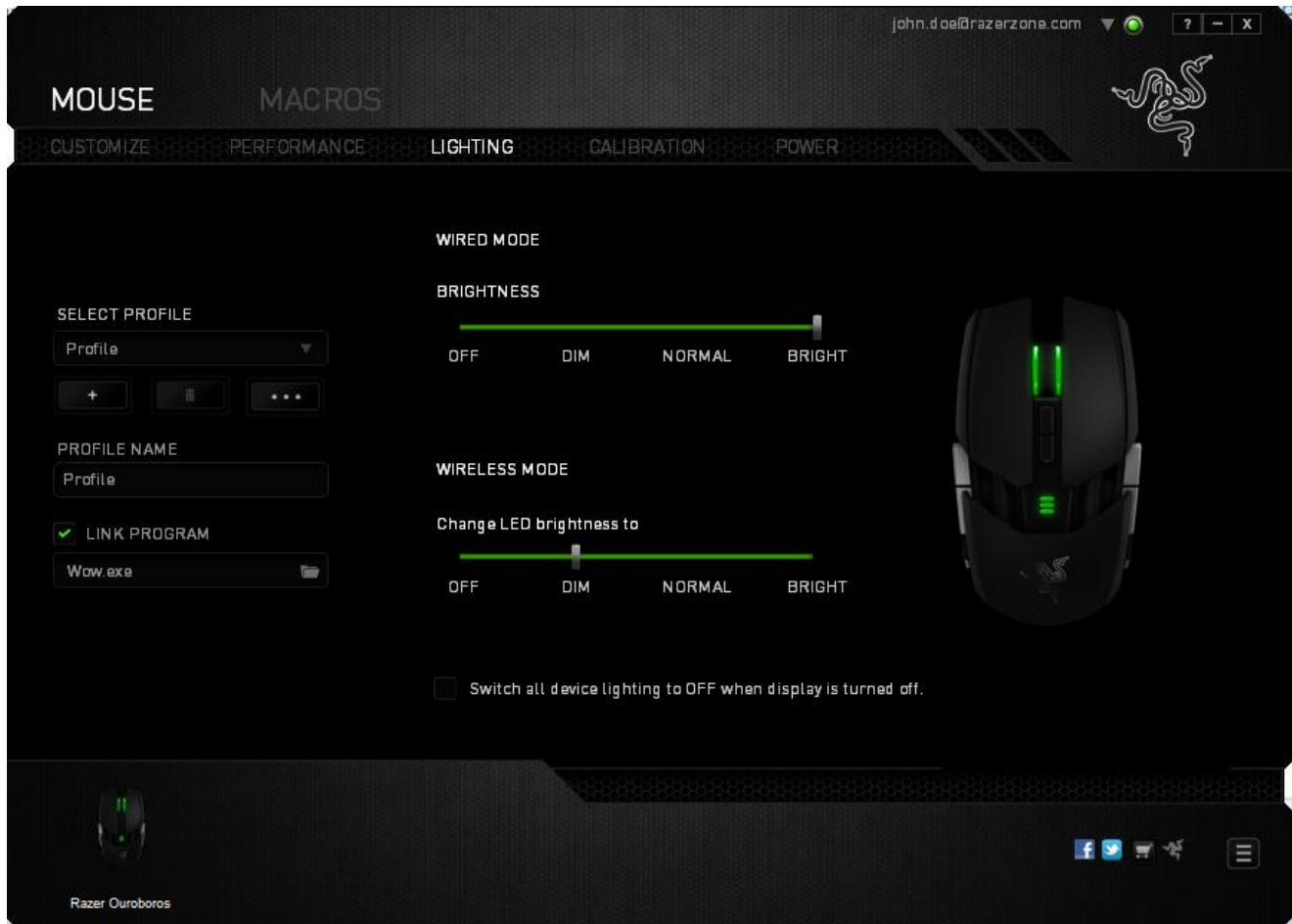
Acceleration increases the cursor's movement speed depending on how quickly you move the mouse. The higher the value, the faster the mouse accelerates. (Recommended settings: Windows 0, Mac 5)

Polling Rate

The higher the polling rate, the more often the computer receives information about the status of your mouse, thus increasing the mouse pointer's reaction time. You can switch between 125Hz (8ms), 500Hz (2ms) and 1000Hz (1ms) by selecting your desired polling rate on the dropdown menu. (Recommended setting: 500Hz – 1000Hz)

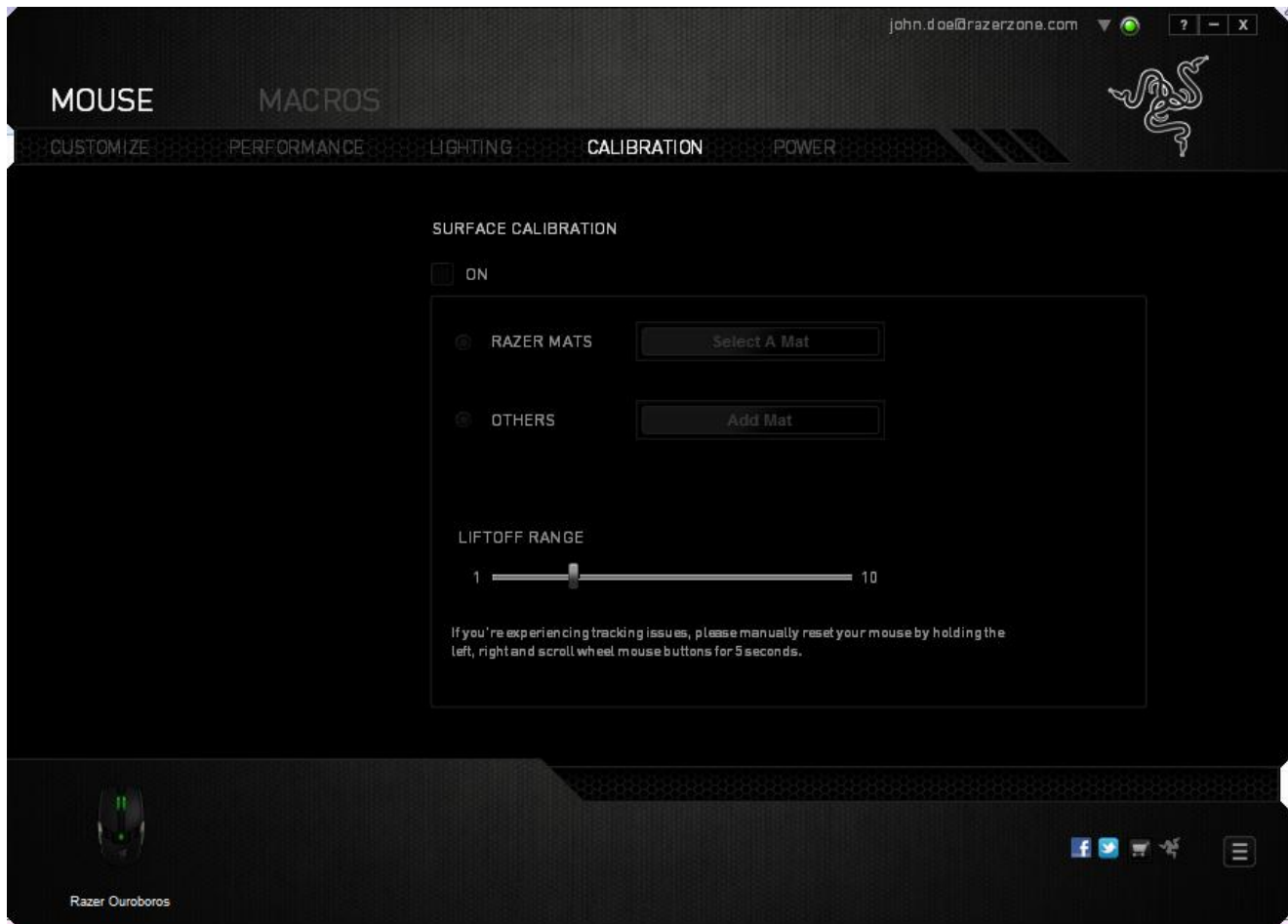
LIGHTING TAB

The Lighting Tab allows you to configure the LEDs on your Razer Ouroboros. You can set the lighting to Off, Dim, Normal or Bright when the device is in wired mode or wireless mode using their respective sliders. Similar to the previous tabs, the changes made here are also automatically saved to your current profile.



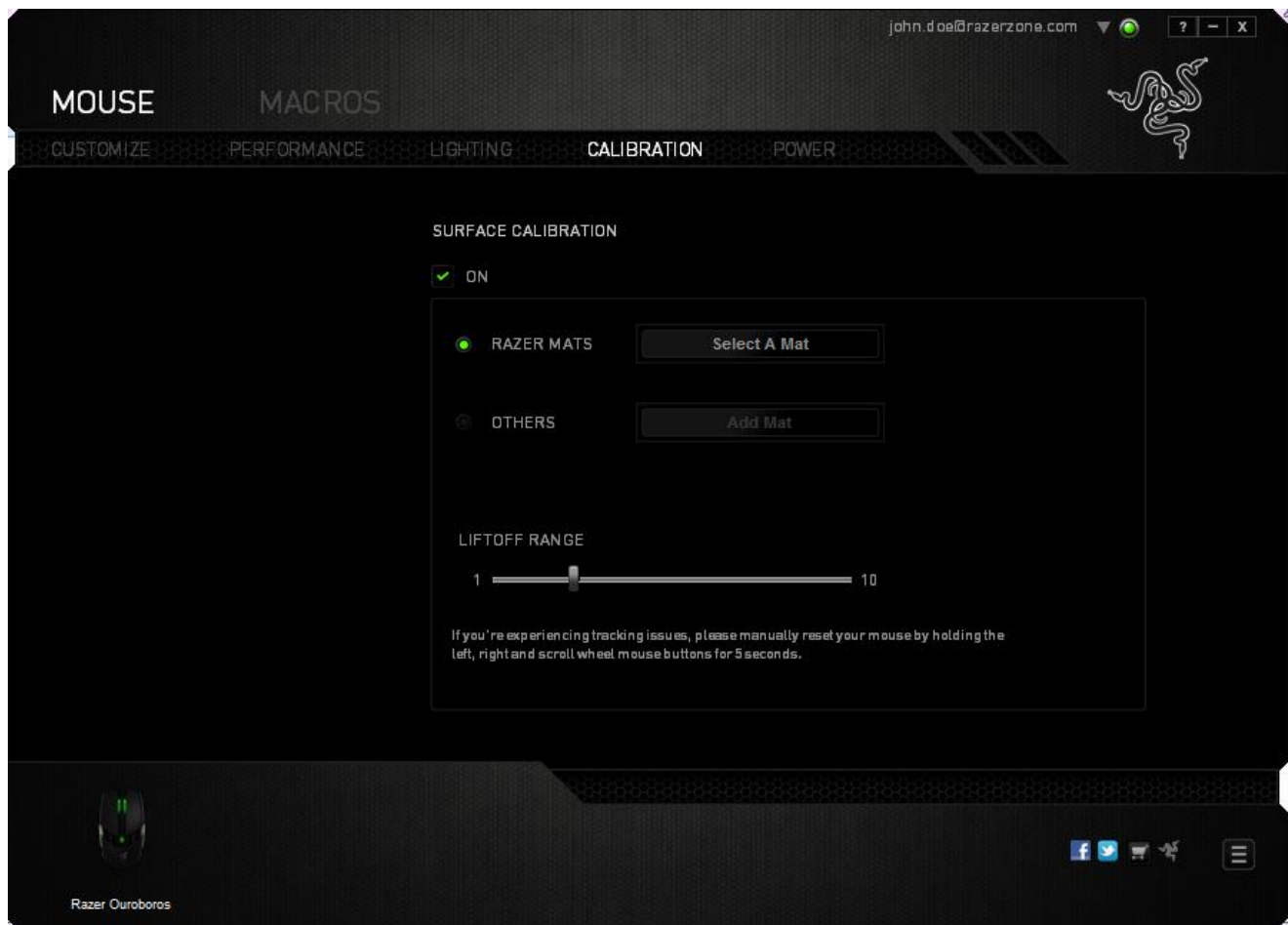
CALIBRATION TAB

The Calibration Tab allows you to optimize the mouse's sensor to any mousing surface for better tracking. To use this feature, you must select the ON option under *SURFACE CALIBRATION*.




The *LIFTOFF RANGE* allows you to set the distance in which the sensor stops tracking as it is being lifted away from the mousing surface. To use this feature, you must first activate *SURFACE CALIBRATION* then choose an appropriate mousing surface.

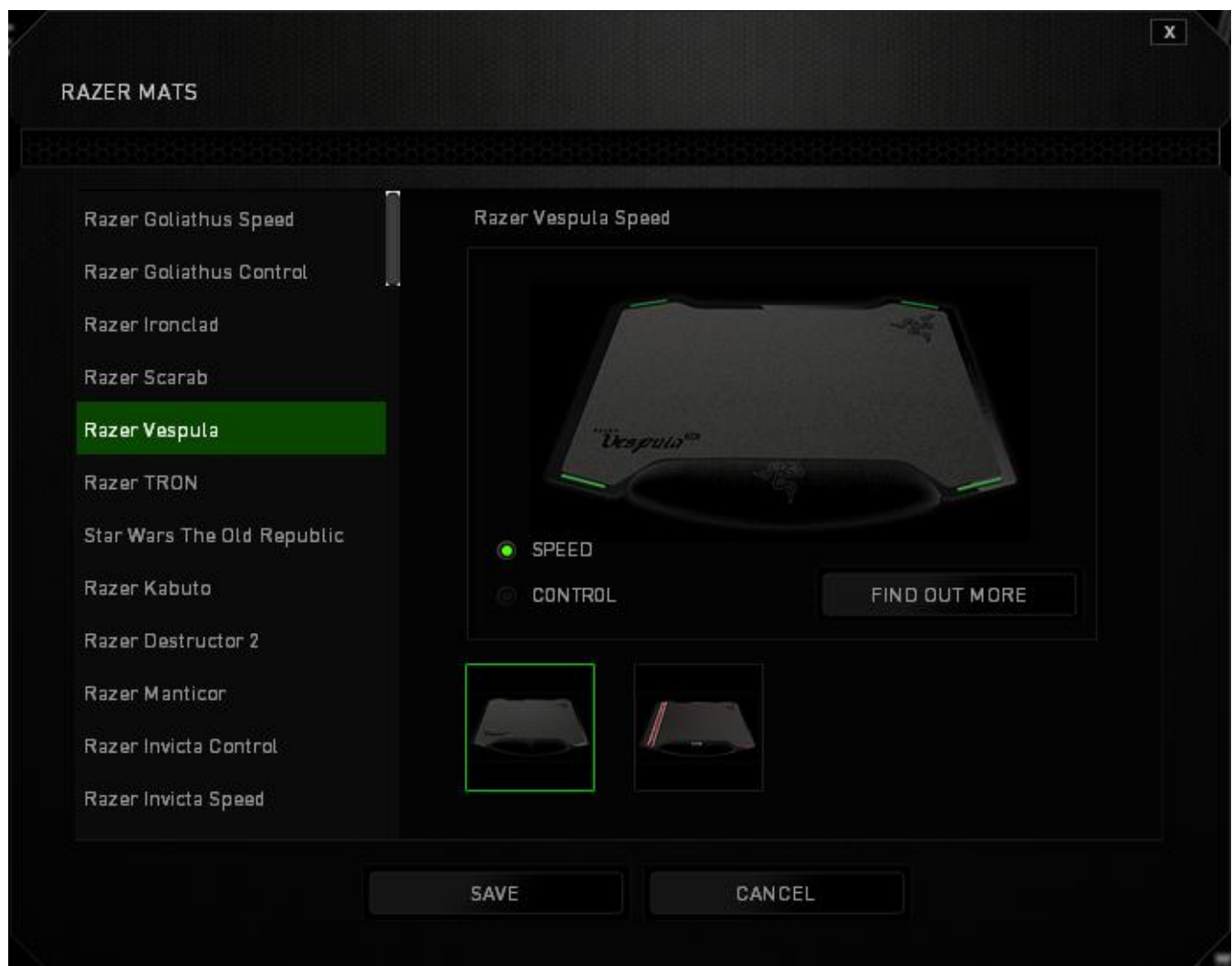
Once you have activated the *SURFACE CALIBRATION* option, you must then choose the appropriate mousing surface you are currently using.




Razer Mouse Mats


The Razer Ouroboros is ‘tuned’ or optimized especially for Razer mouse mats. This means that the sensor has been tested extensively to confirm that the Razer Ouroboros reads and tracks best when paired with Razer mouse mats.

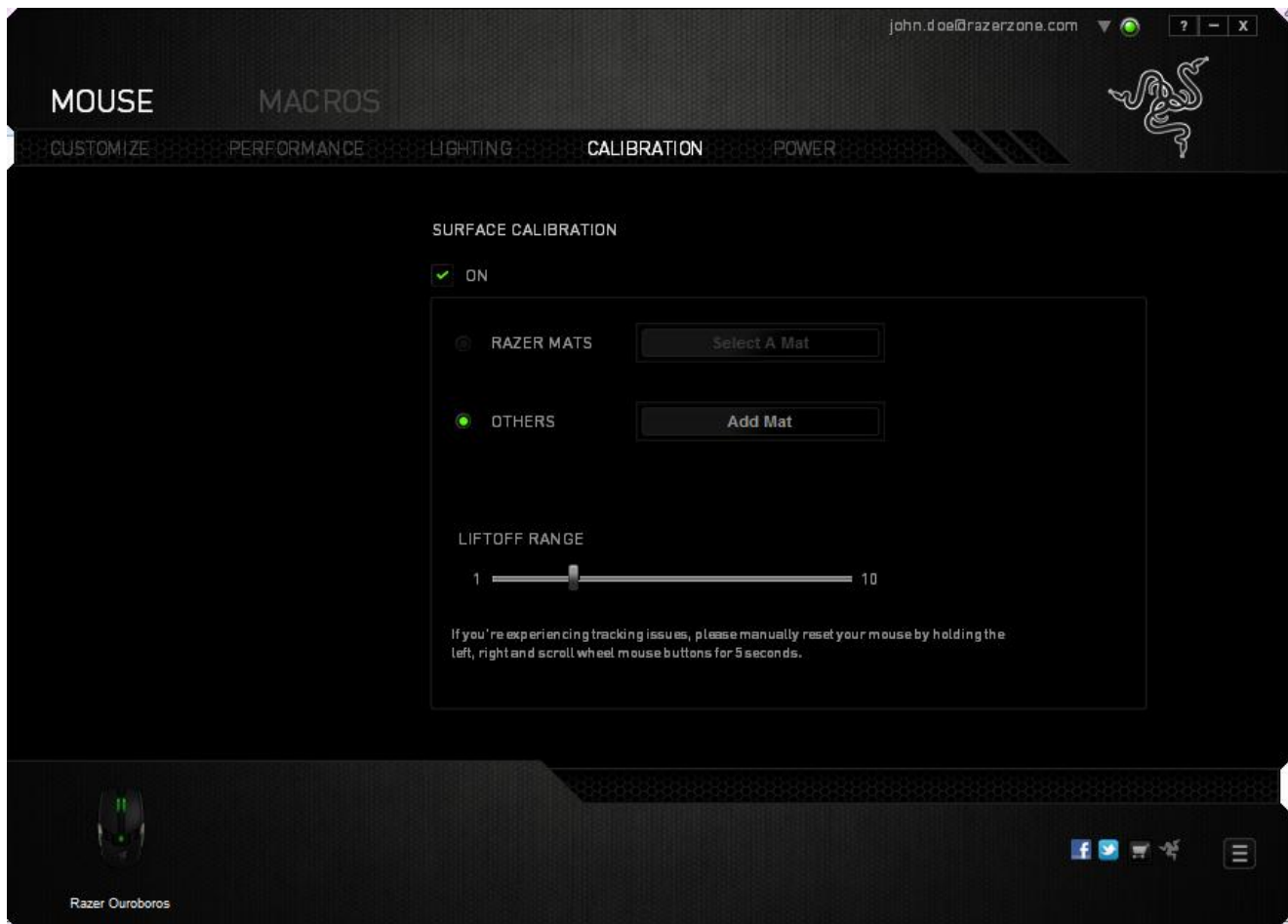
If you are using a Razer mouse mat, click the  button to access the Razer Mats submenu. This menu showcases an extensive list of Razer-branded mouse mats. Select the appropriate mouse mat from the list; then choose between *SPEED* or *CONTROL* if applicable.



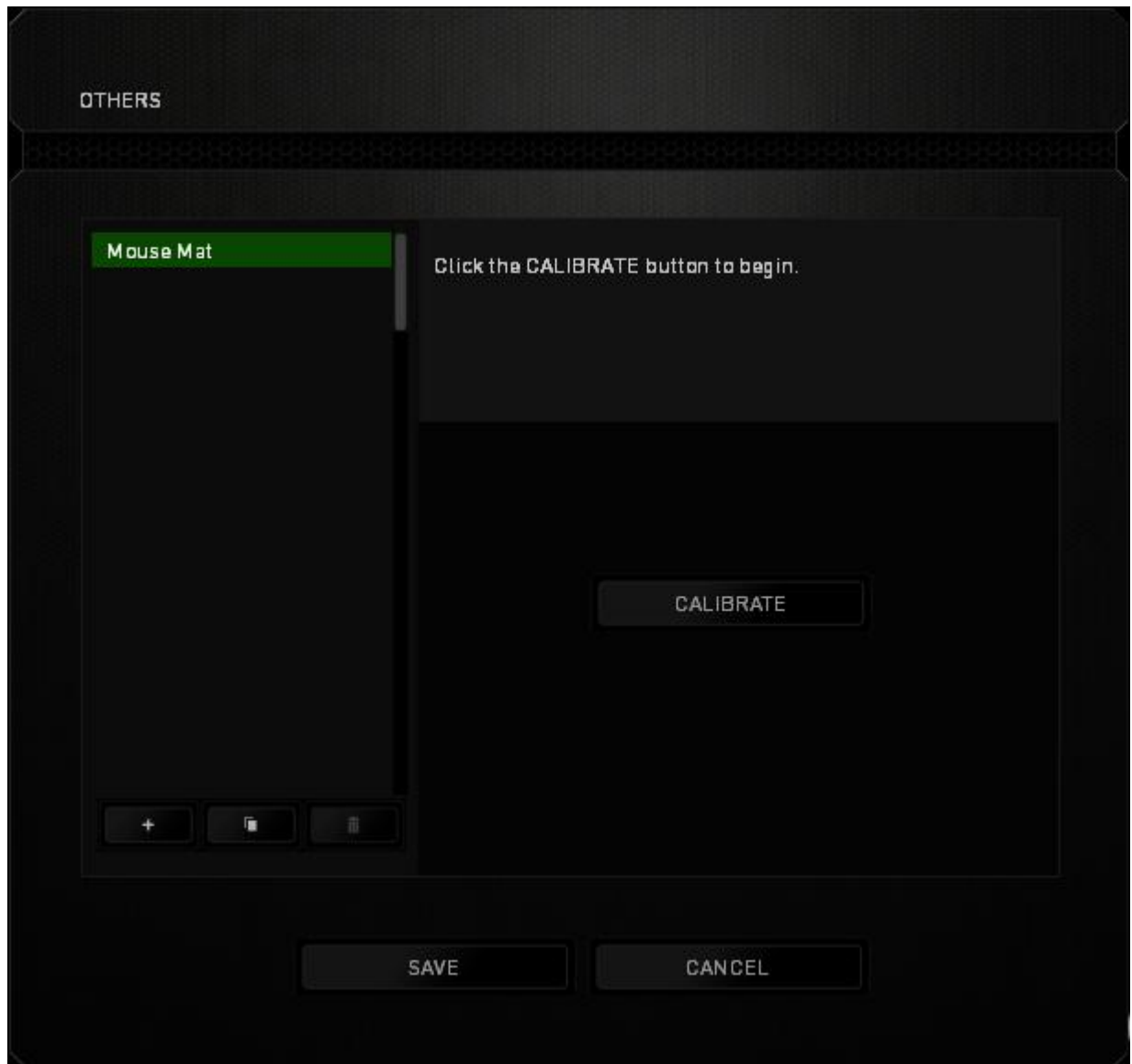
If you wish to learn more about a particular mouse mat or if you wish to purchase a Razer mouse mat, you may do so by clicking the  button.

Other Mousing Surfaces

If you are using a non-Razer mouse mat or a non-standard mousing surface, select *OTHERS* then click the  button to access the manual calibration submenu.

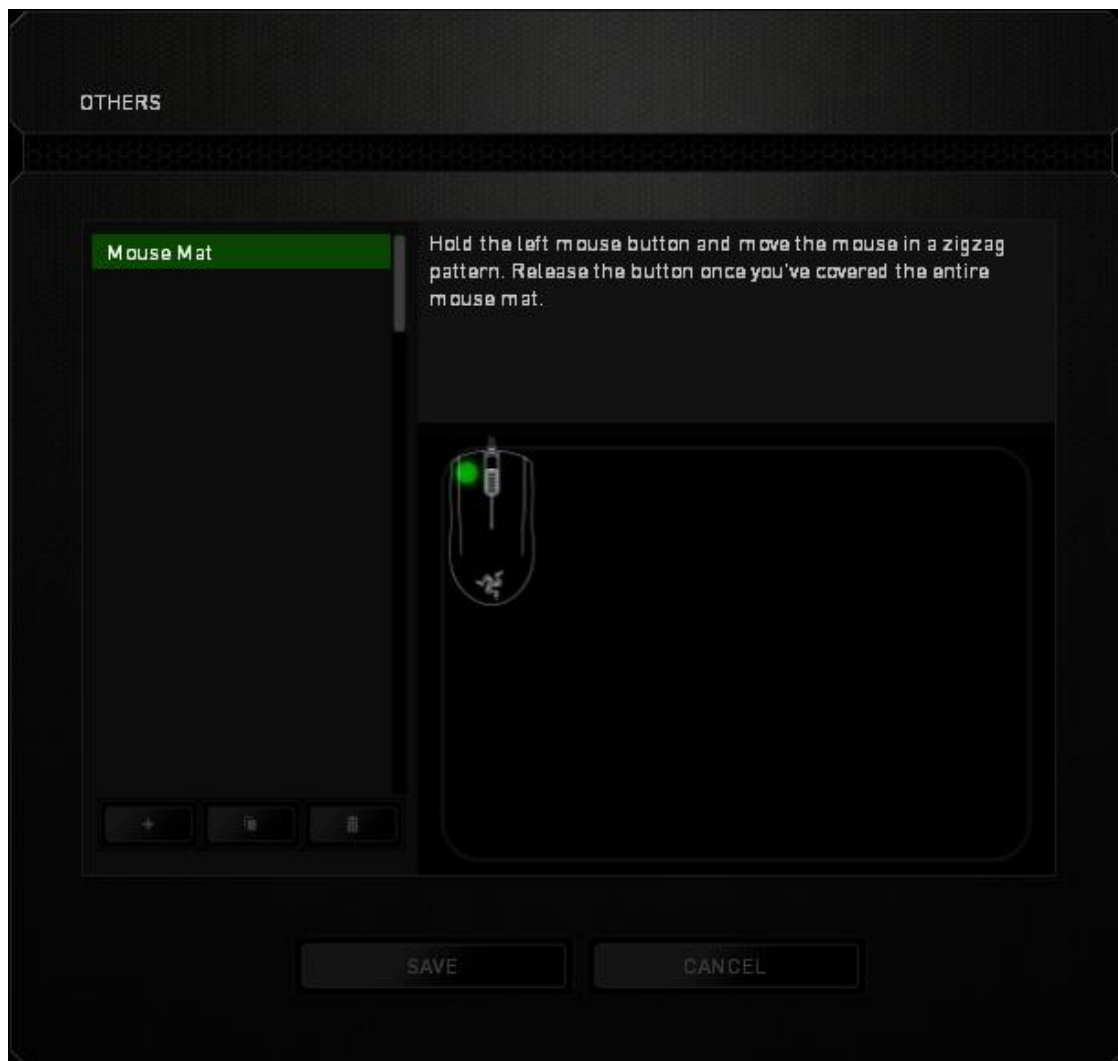


This submenu enables you to manually adjust the mouse's sensor to suit any mousing surface.






To begin calibrating the sensor, click the **CALIBRATE** button. After clicking the button, Razer Synapse 2.0 will begin tuning the sensor. Please avoid moving the Razer Ouroboros during this time.

Once the mouse is ready, press and hold the left mouse button then move the mouse across your entire mousing surface in a zigzag pattern as shown on the screen guide.

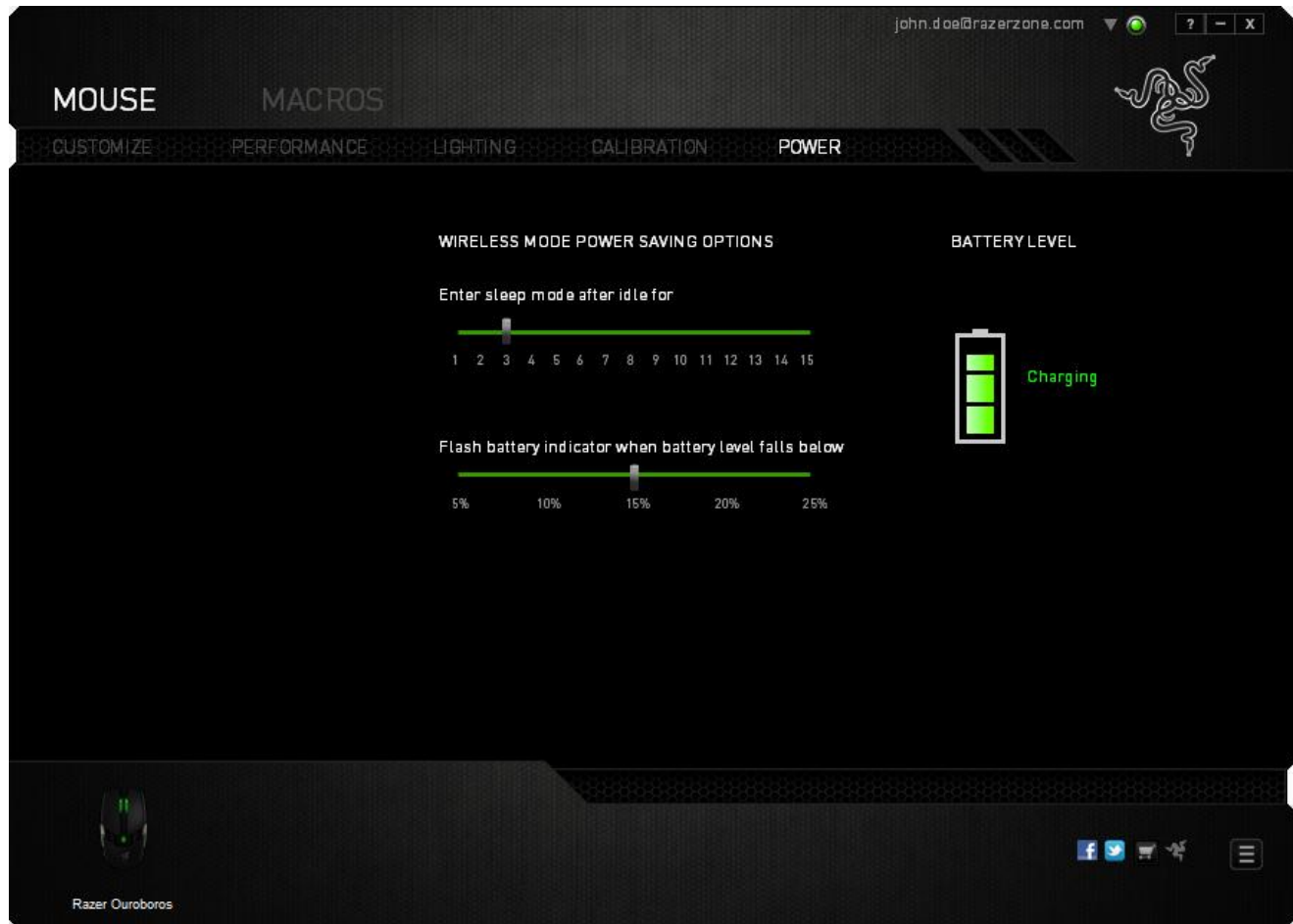


When you have moved across your entire mousing surface, release the left mouse button. This will bring you back to the manual calibration submenu which contains new information regarding your mousing surface.

There are also other options available in this section such as adding a new mouse mat setting by clicking the  button, deleting the currently selected mouse mat setting by clicking the  button or duplicating the currently selected mouse mat setting by clicking the  button.

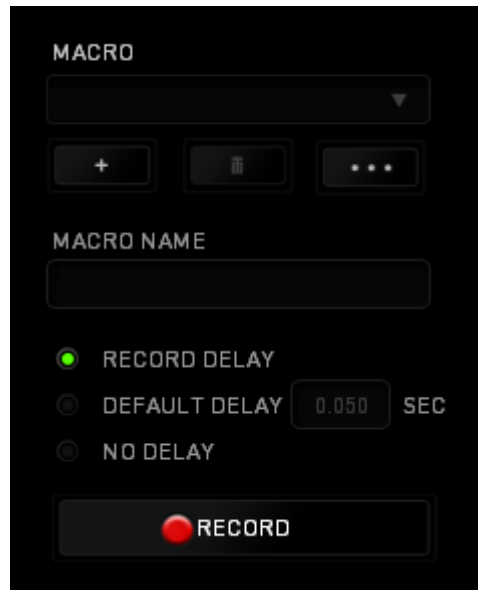
POWER TAB




The Power Tab allows you to manage your device's energy consumption when running on batteries. You can also set your device to enter sleep mode when it has been idle for a certain amount of time. The Power Tab also allows you to be notified when the device's power is at a certain level.





MACROS TAB

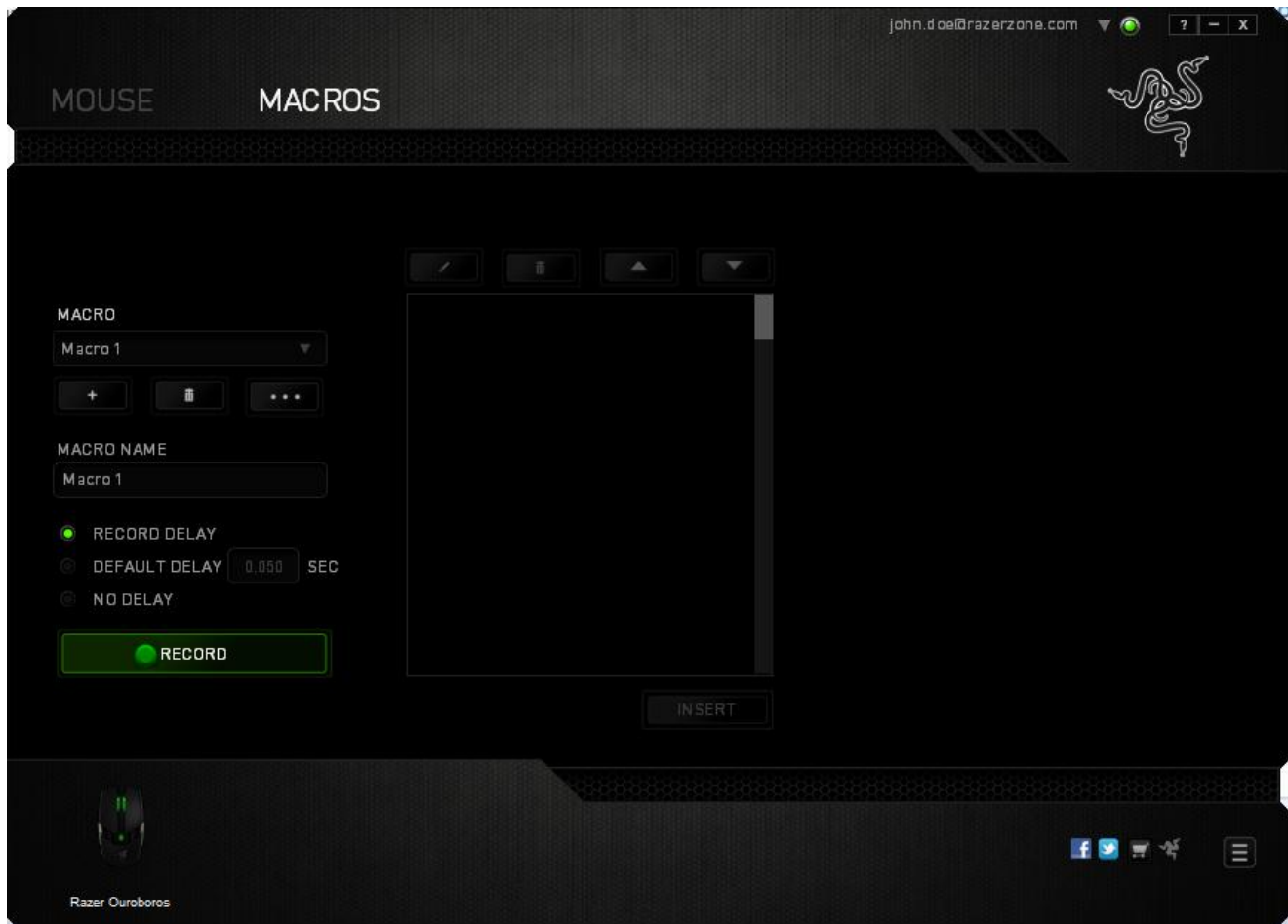
The Macros Tab allows you to create a series of precise keystrokes and button presses. This tab also allows you to have numerous macros and extremely long macro commands at your disposal.



The Macro section works similarly to Profile wherein you can rename a macro by typing on the field below *MACRO NAME*. There are also other options available in the macro section such as creating a new macro by clicking the  button, deleting the current macro by clicking the  button or duplicating the current macro by clicking the  button.

To create a macro command, simply click the  button and all your keystrokes and button presses will automatically register on the macro screen. When you are done recording your macro commands, click on the  button to end the session.





The Macro section allows you to input the delay in-between commands. In *RECORD DELAY* the delay in-between commands are registered as how it is entered. The *DEFAULT DELAY* uses a predefined time (expressed in seconds) as the delay. And *NO DELAY* omits all the pauses in-between keystrokes and button presses.




Note: You may use up to three decimal places when inserting values on the seconds (sec) field.

Once you have recorded a macro, you may edit the commands you have entered by selecting each command on the macro screen. Each keystroke or button press is arranged sequentially with the first command shown at the top of the screen.

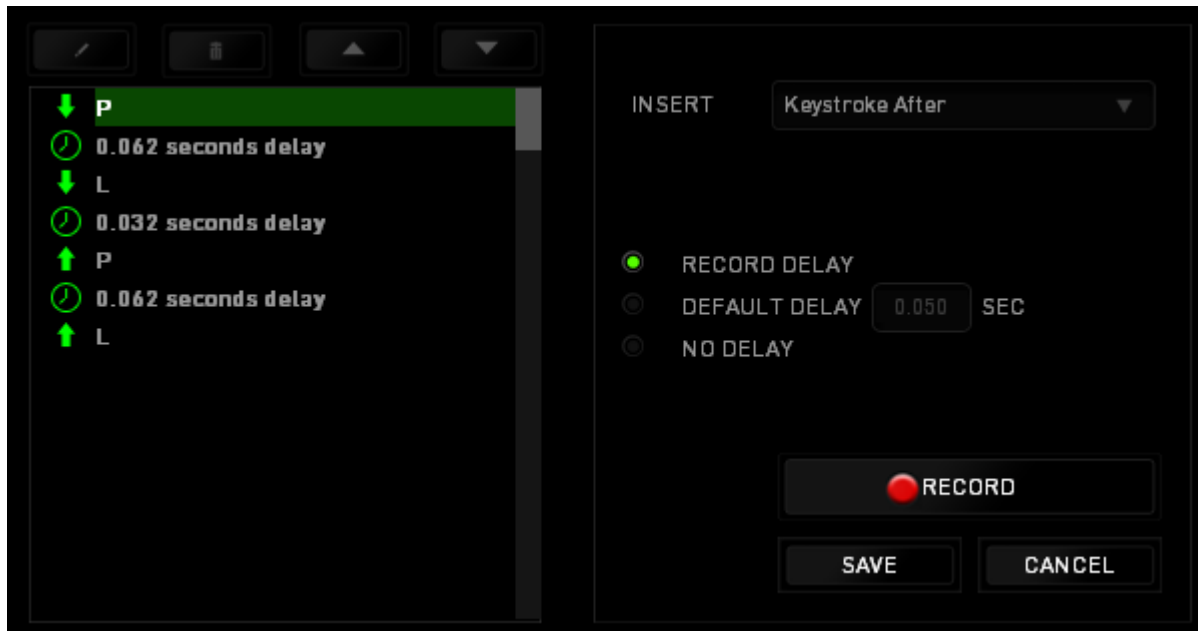



The  button allows you to edit a particular command and the  button enables you to delete a command. The  and  buttons gives you the option to move the command up or down.

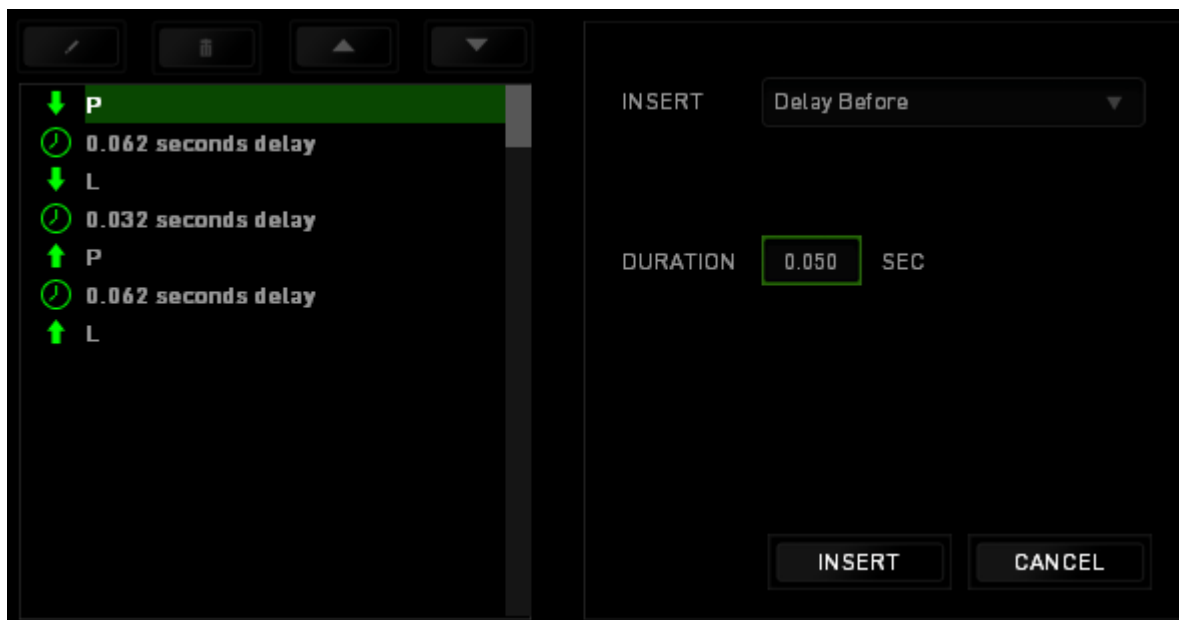
The  button allows you to put in additional keystrokes, button presses or time delays either before or after the selected command.

Once you have pressed the **INSERT** button, a new display window will appear beside the list of macro commands. The dropdown menu on this window allows you to choose a keystroke or a delay to be added in before or after the highlighted macro command.





You may add in a new set of macro commands by clicking the  button on the keystroke menu; or input time delays on the duration field using the delay menu.



9. SAFETY AND MAINTENANCE

SAFETY GUIDELINES

In order to achieve maximum safety while using your Razer Ouroboros, we suggest that you adopt the following guidelines:

1. Avoid looking directly at the tracking beam of your mouse or pointing the beam in anyone else's eye. Note that the tracking beam is NOT visible to the naked human eye and is set on an Always-On mode.
2. Should you have trouble operating the device properly and troubleshooting does not work, unplug the device and contact the Razer hotline or go to www.razersupport.com for support. Do not attempt to service or fix the device yourself at any time.
3. Do not take apart the device (doing so will void your warranty) and do not attempt to operate it under abnormal current loads.
4. Keep the device away from liquid, humidity or moisture. Operate the device only within the specific temperature range of 0°C (32°F) to 40°C (104°F). Should the temperature exceed this range, unplug and switch off the device in order to let the temperature stabilize to an optimal level.

COMFORT

Research has shown that long periods of repetitive motion, improper positioning of your computer peripherals, incorrect body position, and poor habits may be associated with physical discomfort and injury to nerves, tendons, and muscles. Below are some guidelines to avoid injury and ensure optimum comfort while using your Razer Ouroboros.

1. Position your keyboard and monitor directly in front of you with your mouse next to it. Place your elbows next to your side, not too far away and your mouse within easy reach.

2. Adjust the height of your chair and table so that the keyboard and mouse are at or below elbow height.
3. Keep your feet well supported, posture straight and your shoulders relaxed.
4. During gameplay, relax your wrist and keep it straight. If you do the same tasks with your hands repeatedly, try not to bend, extend or twist your hands for long periods.
5. Do not rest your wrists on hard surfaces for long periods. Use a wrist rest to support your wrist while gaming.
6. Customize the buttons on your mouse to suit your style of gaming in order to minimize repetitive or awkward motions while gaming.
7. Make sure that your mouse fits comfortably in your hands.
8. Do not sit in the same position all day. Get up, step away from your desk and do exercises to stretch your arms, shoulders, neck and legs.
9. If you should experience any physical discomfort while using your mouse, such as pain, numbness, or tingling in your hands, wrists, elbows, shoulders, neck or back, please consult a qualified medical doctor immediately.

MAINTENANCE AND USE

The Razer Ouroboros requires minimum maintenance to keep it in optimum condition. Once a month we recommend you unplug the device from the USB port and clean it using a soft cloth or cotton swab with a bit of warm water to prevent dirt buildup. Do not use soap or harsh cleaning agents.

10. LEGALESE

COPYRIGHT AND INTELLECTUAL PROPERTY INFORMATION

Copyright © 2012 Razer Inc. All rights reserved. Razer, For Gamers By Gamers, and the triple-headed snake logo are trademarks or registered trademarks of Razer Inc. and/or affiliated companies in the United States or other countries. Windows and the Windows logo are trademarks of the Microsoft group of companies. Mac OS, Mac and the Mac logo are trademarks or registered trademarks of Apple. All other trademarks are the property of their respective owners.

Razer Inc (“Razer”) may have copyright, trademarks, trade secrets, patents, patent applications, or other intellectual property rights (whether registered or unregistered) concerning the product in this Master Guide. Furnishing of this Master Guide does not give you a license to any such copyright, trademark, patent or other intellectual property right. The Razer Ouroboros (the “Product”) may differ from pictures whether on packaging or otherwise. Razer assumes no responsibility for such differences or for any errors that may appear. Information contained herein is subject to change without notice.

LIMITED PRODUCT WARRANTY

For the latest and current terms of the Limited Product Warranty, please visit www.razerzone.com/warranty.

LIMITATION OF LIABILITY

Razer shall in no event be liable for any lost profits, loss of information or data, special, incidental, indirect, punitive or consequential or incidental damages, arising in any way out of distribution of, sale of, resale of, use of, or inability to use the Product. In no event shall Razer’s liability exceed the retail purchase price of the Product.

COSTS OF PROCUREMENT

For the avoidance of doubt, in no event will Razer be liable for any costs of procurement unless it has been advised of the possibility of such damages, and in no case shall Razer be liable for any costs of procurement liability exceeding the retail purchase price of the Product.

GENERAL

These terms shall be governed by and construed under the laws of the jurisdiction in which the Product was purchased. If any term herein is held to be invalid or unenforceable, then such term (in so far as it is invalid or unenforceable) shall be given no effect and deemed to be excluded without invalidating any of the remaining terms. Razer reserves the right to amend any term at any time without notice.